

PROPOSED CONSTRUCTION OF 3NO.CLASSROOMS

AT

KIANDA PRIMARY SCHOOL

IN

BAHATI CONSTITUENCY

NAKURU COUNTY

**NATIONAL GOVERNMENT CONSTITUENCIES
DEVELOPMENT FUND BOARD**

24 JUN 2021

**CORPORATE SOCIAL RESPONSIBILITY
PROGRAMME**

ITEM NO	DESCRIPTION	QTY	UNIT	RATE	SHS
	<u>ENVIRONMENTAL CONSERVATION</u>				
A	The Contractor shall plant trees immediately the site is handed over as directed by County Works Officer and Head Teacher and water during contract period till well established	ITEM		SUM	20,000
	<u>SUBSTRUCTURE</u>				
	1.If site is sloping flatten site before construction commences and where possible Building should be along contours and not across same.				
	2. Substructure Walling should on average be 300mm above flattened ground.				
	<u>ALL PROVISIONAL</u>				
A	Clear site of bushes, grass and debris and cart away and burn	289	SM		
B	Excavate oversite 150mm deep to remove vegetable soil and cart away and deposit as directed	289	SM		
C	Excavate to reduce levels commencing from stripped ground level	289	CM		
D	Excavate for trench not exceeding 1.50 metres deep from stripped ground	51	CM		
E	Extra over for excavation in rock of any class	2	CM		
F	Cart away excavated material and deposit in council approved dump	43	CM		
G	Return, fill and ram selected material to back of foundations	40	CM		
H	Allow for planking and strutting to uphold sides of excavations	ITEM		SUM	
I	Allow for keeping excations free from general water including spring water by pumbing or otherwise	ITEM		SUM	
J	Hardcore fill in making up levels laid and compacted in layers of 150 mm thick and overall thickness 300 mm	274	SM		
	Carried to Collection				
	1				



ITEM NO	DESCRIPTION	QTY	UNIT	RATE	SHS
A	Treat surface of stripped ground with chloropyrif or antitermite treatment applied in accordance with the manufacturer' printed instructions	289	SM		
B	Murram blinding laid on hardcore(ms)	274	SM		
C	Gauge 500 damp proof membrane	289	SM		
	<u>Concrete Work</u>				
	<u>Plain Concrete Class mix (1:4:8) in:</u>				
D	50 mm Thick blinding under column bases and strip foundations	41	SM		
	<u>Vibrated Reinforced concrete mix (1:2:4) in:-</u>				
E	Strip foundations	6	CM		
F	100 mm Thick floor bed	290	SM		
G	100 Ditto ramp 1200 mm wide and 3000 mm long including 20mm thick cement and sand screed (1:3) with grooves in approved pattern	1	NO		
H	Concrete site step size 1200x500 mm ,200 mm step and 165 mm high	8	LM		
	Carried to Collection				
	2				



ITEM NO	DESCRIPTION	QTY	UNIT	RATE	SHS
A	50 mm Thick precast concrete paving slabs (1:2:4) with joints in cement mortar (1:4) pointed and laid on murrum and hardcore bed including excavating 150 mm deep	23	SM		
	<u>REINFORCEMENT</u>				
	<u>Supply and fix the following high tensile ribbed round steel bars to B.S. 4461 including binding wires, spacer blocks ,cutting and bending</u>				
B	10 mm Diameter bars	90	KG		
C	8mm Ditto	120	KG		
D	BRC Fabric REF. A142 weighing 2.20 KGS per square metres including side and end laps, stools and binding wire	290	SM		
	Carried to collection				
	3				

NATIONAL GOVERNMENT CONSTITUENCIES
 DEVELOPMENT FUND BOARD
 24 JUN 2021
 CORPORATE SOCIAL RESPONSIBILITY
 PROGRAMME

ITEM NO	DESCRIPTION	QTY	UNIT	RATE	SHS
	Sawn Formwork to:-				
A	Sides of foundations	17	SM		
B	Edge of bed 75- 150 mm high	81	LM		
C	Edge of riser 150 - 225 mm high	8	LM		
	<u>WALLING</u>				
D	150 mm Thick natural stone walling to 14 N/mm ² crushing strength joint in cement and sand mortar (1:4) and reinforced with 25x20 mm hoop iron at alternate courses	84	SM		
E	150X300 mm Piers	26	LM		
	<u>PLINTHS</u>				
F	12 mm Thick cement and sand (1:4) render to plinth woodfloat finished	22	SM		
G	Prepare and apply three coats bitumastic paint to rendered plinth	22	SM		
	Carried to collection				
	4				



ITEM NO	DESCRIPTION	QTY	UNIT	RATE	SHS
	<u>COLLECTION</u>				
	From page 1				
	" " 2				
	" " 3				
	" " 4				
	TOTAL FOR SUBSTRUCTURE CARRIED TO MAIN SUMMARY				
	5				

NATIONAL GOVERNMENT CONSTITUENCIES
 DEVELOPMENT FUND BOARD
 24 JUN 2021
 CORPORATE SOCIAL RESPONSIBILITY
 PROGRAMME

ITEM NO	DESCRIPTION	QTY	UNIT	RATE	SHS
	<u>REINFORCED CONCRETE SUPERSTRUCTURE</u>				
	<u>Vibrated Reinforced Concrete mix class 25/20 with crushing strength of 25N/mm²</u>				
A	Ring Beams	4	CM		
	<u>REINFORCEMENT</u>				
	<u>Supply and fix the following high tensile ribbed steel bars as before :</u>				
B	12 mm Diameter bars	110	KG		
C	8 mm Ditto	160	KG		
	Carried to collection				
	6				

NATIONAL GOVERNMENT CONSTITUENCIES
DEVELOPMENT FUND BOARD
24 JUN 2021
CORPORATE SOCIAL RESPONSIBILITY
PROGRAMME

ITEM NO	DESCRIPTION	QTY	UNIT	RATE	SHS
	<u>Sawn formwork to:-</u>				
A	Sides and soffits of beams	48	SM		
	<u>MILD STEEL</u>				
B	75mm Diameter hollow section tubular pillar 2800 mm high with 100x100 x3 mm base plate welded on with 4NO. 12 mm diameter anchor bolts with nut and washers and form holes in base plate	10	NO		
	<u>Painting and Decorating</u>				
C	Prepare and apply one undercoat and two coats gloss oil paint to general surfaces of metal	28	LM		
	<u>SUNDRY</u>				
	<u>WELD ON</u>				
D	100X50 x2mm Plate with 4NO.10 mm bolts 150 mm long with nut and washers and form holes in mild steel and timber	10	NO		
	<u>Second grade celcured Cypress:</u>				
E	100X50 mm Wall plate to steel pillars (MS)	31	LM		
	Carried to collection				
	<u>COLLECTION</u>				
	From page 6				
	" Above				
	TOTAL FOR REINFORCED CONCRETE				
	SUPERSTRUCTURE CARRIED TO MAIN SUMMARY				
	7				

NATIONAL GOVERNMENT CONSTITUENCIES
 DEVELOPMENT FUND BOARD
 24 JUN 2021
 CORPORATE SOCIAL RESPONSIBILITY
 PROGRAMME

ITEM NO	DESCRIPTION	QTY	UNIT	RATE	SHS
	<u>WALLING</u>				
	<u>EXTERNAL WALLING</u>				
	<u>Natural stone machine cut , with crushing strength of 14.00 N/MM2 bedded in cement and sand (1:4) mortar joints reinforced with hoop as before:</u>				
A	150 mm Thick walls	164	SM		
B	150mm Ditto in gables	18	SM		
C	150x300 mm Piers	65	LM		
D	150 mm Wide damp proof course laid in cement and sand (1:4) bed	77	LM		
E	Extra over medium chisel dressed walling for neatly recessed horizontal joints	164	SM		
	<u>INTERNAL WALLING</u>				
F	150 mm Thick machine cut stone in cement and sand mortar joints (1:4)	41	SM		
G	150X200 mm Precast concrete permanent vents with mosquito gauze wire build in walling	8	PR		
H	150 mm Wide damp proof as before described	15	LM		
	<u>Sundry</u>				
I	Raking cutting on 150 mm thick walls	40	LM		
J	Eaves filling on 150mm thick walling and 300mm average height	62	LM		
	TOTAL FOR WALLING CARRIED TO MAIN SUMMARY				
	8				



ITEM NO	DESCRIPTION	QTY	UNIT	RATE	SHS
	<u>ROOFING</u>				
	<u>ROOF CONSTRUCTION</u>				
	<u>TIMBER TRUSSES</u>				
	<u>Fabricate, bolt and hoist the following 18NO.Trusses span 7.90 metres and hoist and fix 3.00 metre above ground:</u>				
	<u>Second grade celcured cypress:</u>				
A	150x50 mm Rafters	209	LM		
B	150x50 Ceiling joists/tie beams	169	LM		
C	100x50 Struts and ties	153	LM		
D	100X50 mm King post	24	LM		
	<u>Sundry</u>				
E	12 mm Diameter rawl bolts 200 mm long with washers	51	NO		
	<u>END OF TRUSSES</u>				
	<u>General Construction</u>				
F	100X50 mm Wall plate	62	LM		
I	75X50 mm Purlins	320	LM		
	<u>ROOF COVERING</u>				
J	Pre-painted gauge 28 galvanised corrugated roofing sheets with side and end laps including brass 'J' bolts with plastic caps to suppliers's specification	371	SM		
K	Ridge and hip cap in matching sheet	31	LM		
	<u>Wrot Cypress</u>				
L	200X25 mm Fascia and Barge board	87	LM		
	<u>Painting and Decorating</u>				
M	Prepare and apply one under coat and three finishing coats of gloss oil paint to general surfaces of wood work 200 to 300 mm girth	87	LM		
	Carrie to Collection				

9



ITEM NO	DESCRIPTION	QTY	UNIT	RATE	SHS
	<u>Rainwater Goods</u>				
A	100 mm Diameter half round plastic eaves gutters supported with brackets at 1000 mm centres	62	LM		
B	Extra over for 600 mm long swanneck	4	NO		
C	Ditto stopped ends	4	NO		
D	Ditto outlets	4	NO		
E	Ditto bends	4	NO		
F	75 mm Diameter down pipe held with pipe clips to walling	12	LM		
G	Extra over for offset	4	NO		
	Carried to Collection				
	<u>COLLECTION</u>				
	From Page 9				
	" " 10				
	TOTAL FOR ROOF CARRIED TO MAIN SUMMARY				
	10				



ITEM NO	DESCRIPTION	QTY	UNIT	RATE	SHS
	<u>DOORS</u>				
	<u>Mild Steel</u>				
	<u>Fabricate,weld, supply and fix steel doors comprising gauge 16 cover plate in boxes ,heavy gauge sections with weld joints ground smooth, apply red oxide primer before delivery including lugs built - in walling to Architect's approval:-</u>				
A	Steel door size 1200x2100 mm double door, leaf size 600x2100 mm, consisting 38x38 x 2 mm angle frame, 25x25mm hollow section tube internal framing including necessary ironmongery with 3NO. 25mm Heavy duty hinges, box profile 450x450mm	3	NO		
	<u>Glazing</u>				
B	4mm Thick clear sheet glass in panes 0.10 to 0.50 Square metres and glazing metal with linseed putty	3	SM		
	Carried to Collection				
	11				



ITEM NO	DESCRIPTION	QTY	UNIT	RATE	SHS
	<u>Ironmongery</u>				
A	Two lever mortice lock and furniture including matching screws as Union	0	NO		
B	Heavy duty bush hinges	6	NO		
C	Rubber stops	6	NO		
	<u>Painting and Decorating</u>				
	<u>Externally</u>				
D	Prepare and apply three coats of gloss oil paint from Crown Berger or Dura Coat to general surfaces of metal	9	SM		
	<u>Internally</u>				
E	Prepare and apply three coats as before	9	SM		
	Carried to Collection				
	<u>COLLECTION</u>				
	From Page 11				
	" " 12				
	TOTAL FOR DOORS CARRIED TO MAIN SUMMARY				
	12				

NATIONAL GOVERNMENT CONSTITUENCIES
 DEVELOPMENT FUND BOARD
 24 JUN 2021
 CORPORATE SOCIAL RESPONSIBILITY
 PROGRAMME

ITEM NO	DESCRIPTION	QTY	UNIT	RATE	SHS
	<u>WINDOWS</u>				
	<u>Mild Steel</u>				
	<u>Fabricate ,Supply and fix including ground smooth weld joints with ' I' sections and 25x25 mm ' Z' sections prepare and apply red oxide primer before delivery including brass window stays and fasteners to Architect's approval:</u>				
A	Composite window size 1800x1500 mm consisting of 2NO. opening lights size 600x1500mm , 1NO.fixed light and ventlight	9	NO		
B	Ditto 1800x1000 mm Ditto, 2NO. Opening lights, 1NO. fixed light and ventlight	6	NO		
	<u>Glazing</u>				
C	4mm Thick clear glass in panes 0.10 to 0.50 square metres and glazing metal with linseed oil putty	36	SM		
	<u>Precast Concrete</u>				
D	265X75 mm Window cill in concrete (1:2:4) including moulds, throating, top weathered and hoist and fix in position	29	LM		
	Carried to Collection				
	13				



ITEM NO	DESCRIPTION	QTY	UNIT	RATE	SHS
	<u>Painting and Decorating</u>				
	<u>Internally</u>				
A	Prepare and apply one under coat and three coats of gloss oil paint from Crown Berger or Dura Coat to general surfaces of metal	36	SM		
	<u>Externally</u>				
B	Ditto Surfaces of metal	36	SM		
	Carried to Collection				
	<u>COLLECTION</u>				
	From Page 13				
	" " 14				
	TOTAL FOR WINDOWS CARRIED TO MAIN SUMMARY				
	14				

NATIONAL GOVERNMENT CONSTITUENCIES
 DEVELOPMENT FUND BOARD
 24 JUN 2021
 CORPORATE SOCIAL RESPONSIBILITY
 PROGRAMME

ITEM NO	DESCRIPTION	QTY	UNIT	RATE	SHS
	<u>FINISHES</u>				
	<u>EXTERNAL FINISHES</u>				
A	12 mm Thick cement and sand (1:4) rendering to concrete surfaces woodfloat finished	23	SM		
B	12 mm Ditto to walls and reveals	17	SM		
	<u>Painting and Decorating</u>				
C	Prepare and apply three coats plastic emulsion paint from Crown Berger or Dura Coat to plastered surfaces	40	SM		
	<u>Internal Wall Finishes</u>				
D	12 mm Thick plaster plus cement and sand (1:4) steel float finished	272	SM		
	<u>Painting and Decorating</u>				
E	Prepare and apply three coats plastic emulsion vinyl silk cream paint from Crown Berger or Dura Coat to plastered surfaces	272	SM		
F	Extra over plastering for black board and prepare and apply three coats of bitumastic paint ditto	32	SM		
	Carried to Collection				
	15				



ITEM NO	DESCRIPTION	QTY	UNIT	RATE	SHS
	<u>Floor Finishes</u>				
A	20 mm Thick cement and sand (1:3) floor screed wood float finished to receive tiles (M.S)	271	SM		
	<u>CERAMIC TILES</u>				
B	8 mm Thick ceramic floor tiles size 300x300 mm laid with cement grout and joints pointed with white cement	271	SM		
C	8 mm Ditto and 100 mm high skirting	121	LM		
	<u>Ceiling</u>				
D	12 mm Thick chip board ceiling fixed in symmetrical pattern	271	SM		
E	Extra over ceiling for 600x600 mm trap door with 75x25 mm cornice all round and framing	3	NO		
F	75X25 mm Cornice with moulding	136	LM		
	<u>Second grade celcured cypress</u>				
G	50X50 mm Branderings	892	LM		
H	50X50 mm Branderings but plugged	136	LM		
	<u>Painting and Decorating</u>				
I	Prepare and apply three coats of plastic emulsion paint to general surfaces of soft board (Brilliant white)	271	SM		
J	General surfaces to 100 mm girth	136	LM		
	Carried to Collection				



ITEM NO	DESCRIPTION	QTY	UNIT	RATE	SHS
	<u>COLLECTION</u>				
	From Page 15				
	" " 16				
	TOTAL FOR FINISHES CARRIED TO MAIN SUMMARY				
	17				

NATIONAL GOVERNMENT CONSTITUENCIES
 DEVELOPMENT FUND BOARD
 24 JUN 2021
 CORPORATE SOCIAL RESPONSIBILITY
 PROGRAMME

ITEM NO	DESCRIPTION	QTY	UNIT	RATE	SHS
	<u>FIXTURES</u>				
	<u>The following in 3NO.Black Board size 5000x1500 mm</u>				
A	12 mm Thick plaster (1:4) to walls as before	23	SM		
B	Prepare and apply three coats of black matt to walls	23	SM		
C	50X25 mm Wrot Cypress moulded bead with groove at bottom for chalk framing round board plugged and duster holder <u>The following in 3NO.Notice Board size 2400x1200 mm</u>	39	LM		
D	12 mm Thick soft board	9	SM		
E	50X25 mm Wrot Cypress moulded framing plugged	22	LM		
	<u>Painting and Decorating</u>				
F	Prepare and apply one under coat and three coats of brilliant white emulsion paint to general surfaces of soft board	9	SM		
G	Prepare and apply one under coat and three coat of gloss oil paint to general surfaces of wood work to 100 mm girth	22	LM		
	Carried to Collection				
	18				



ITEM NO	DESCRIPTION	QTY	UNIT	RATE	SHS
	<u>COLLECTION</u>				
	From Page 18				
	TOTAL FOR FIXTURES CARRIED TO SUMMARY				
	19				

NATIONAL GOVERNMENT CONSTITUENCIES
 DEVELOPMENT FUND BOARD
 24 JUN 2021
 CORPORATE SOCIAL RESPONSIBILITY
 PROGRAMME

ITEM NO	DESCRIPTION	QTY	UNIT	RATE	SHS
<u>WATER STORAGE TANK</u>					
A	Excavate over site as before	3	SM		
B	Excavate foundation trench ditto	2	CM		
C	150 mm Thick concrete block walling as before	3	SM		
D	Mass concrete (1:3:6) in foundations	1	CM		
E	450 mm Thick hardcore as before	3	SM		
F	50 mm Thick murrum as before	3	SM		
G	100 mm Thick concrete (1:3:6) in slap	3	SM		
H	20 mm Thick cement and sand screed (1:3) as before	4	SM		
I	BRC REF A142 Fbric mesh as before	3	SM		
J	Supply and install cold water storage plastic water 10000 Litre capacity from Kentank or other equal and approved, Heavy duty (3 Ply)	1	NO		
K	12 mm Diameter pegler tap	1	NO		
L	19 mm Ditto union	1	NO		
M	32 mm Diameter overflow pipe 400 mm long	1	NO		
TOTAL FOR WATER TANK CARRIED TO MAIN SUMMARY					
20					

NATIONAL GOVERNMENT CONSTITUENCIES
 DEVELOPMENT FUND BOARD
 24 JUN 2021
 CORPORATE SOCIAL RESPONSIBILITY
 PROGRAMME

ITEM NO	DESCRIPTION	QTY	UNIT	RATE	SHS
<u>ELECTRICAL INSTALLATION</u>					
<u>ELECTRICAL WORKS TO BE EXECUTED BY SPECIALIST REGISTERED BY KPL</u>					
<u>Supply , install , test and commission the following:</u>					
A	Lighting points wired in 3x1.5mm ² SC PVC CU cables drawn in 20mm dia HG PVC conduits with all necessary accessories excluding switches and fittings for one way switching	29	NO		
B	10A moulded ivory switch plate as crabtree or approved equivalent as follows: i. Two way one gang	3	NO		
	ii. Three way one gang	1	NO		
C	Lighting fittings complete with fixing accessories and lamps as follows: i). 1200mm lx 36w florescent batten fitting or slim cross section with clip on cover plate and adjustable end cap system as Thorn Popular Pack batten or approved equivalent	21	NO		
D	ii) Bulkhead fitting with aluminium body on Thorn or approved equivalent with Energy saving bulb	8	NO		
E	Socket outlets Power outlets i. Comprising of wiring in 3x2.5mm ² PVC SC CU in concealed HG conduits	6	NO		
	ii. 13A 2gang switched moulded socket outlet as crabtree or approved equivalent	3	NO		
	Consumer Units and Distribution Boards				
F	4-Way SP/N consumer unit flush mounted on wall complete with a 10A SP/N integral isolator as crabtree or approved equivalent	1	NO		
G	Single Pole miniature circuit breaker as follows: i. 5ASP	1	NO		
	ii. 30asp	2	NO		
	iii. Blanking covers	1	NO		
	Carried to Collection	21			



ITEM NO	DESCRIPTION	QTY	UNIT	RATE	SHS
A	Sub-mains Cables 3x6.0mm ² SCPVC CU cables drawn in HG conduit	10	LM		
B	Standard cable looping box complete with single cut out fuse neutral link	1	NO		
C	Electrical earthing comprising of 6.0mm ² SC PVC CU cable drawn in HG conduits 1500mm times 15mm copper electrodes c/w clamps pre-cast concrete inspection pit with cover	ITEM		SUM	
D	Testing and commissioning	ITEM		SUM	
E	Allow for supply and fixing Copper Lighting arrestors, w	1	NO		
	Carried to Collection				
	<u>COLLECTION</u>				
	From Page 21				
	" " 22				
TOTAL FOR ELECTRICAL INSTALLATION CARRIED TO SUMMARY					
22					

NATIONAL GOVERNMENT CONSTITUENCIES
 DEVELOPMENT FUND BOARD

 24 JUN 2021

 CORPORATE SOCIAL RESPONSIBILITY
 PROGRAMME

ITEM NO	DESCRIPTION	QTY	UNIT	RATE	SHS
	<u>PRIME COST AND PROVISIONAL SUMS</u> <u>EXPENDITURE FOR ITEMS HERE BELOW SHALL BE APPROVED BY NG-CDF BOARD</u> <u>The following sums shall be expended upon Architect's instructions and may be omitted in whole:</u>				
A	Allow for a Provisional Sum of Kenya Shillings One Hundred Thousand (Kshs.100,000/) for Contingency	ITEM		SUM	100,000
B	Allow for a Prime Cost Sum of Kenya Shillings Fifty Thousand (Kshs.50,000/) for Supply and Delivery of 9KG and 2NO. Water base and 9 Litre X2NO. Carbon dioxide Fire extinguishers mounted on walling to approval	ITEM		SUM	50,000
C	Allow for Branding of Project in accordance with NG-CDF Board Specifications	ITEM		SUM	15,000
	<u>FURNITURE</u>				
D	Allow for a Provisional Sum of Kenya Shillings (Kshs 286,000.00) for Fabrication and Supply of 68NO Ordinary Desk ,3NO.Teachers' and 3NO.Chairs to be supplied by an approved Supplier with specifications from County Works Officer and Head Teacher	ITEM		SUM	286,000
E	Allow for Transport to site	ITEM		10%	28,600
	TOTAL FOR PRIME COST AND PROVISIONAL SUMS CARRIED TO MAIN SUMMARY				
	23				



ITEM NO	DESCRIPTION	SHS
<u>PROPOSED CONSTRUCTION OF 3NO.CLASSROOMS</u>		
<u>MAIN SUMMARY</u>		
A	SUBSTRUCTURE	
B	REINFORCED CONCRETE SUPERSTRUCTURE	
C	WALLING	
D	ROOFING	
E	DOORS	
F	WINDOWS	
G	FINISHES	
H	FIXTURES	
I	WATER TANK	
J	ELECTRICAL INSTALLATION	
K	PRIME COST AND PROVISIONAL SUMS	
L	PRELIMINARIES	
SUB-TOTAL		
ADD VAT 16%		
TOTAL COST OF 3NO.CLASSROOMS CARRIED TO FORM OF TENDER		
24		

NATIONAL GOVERNMENT CONSTITUENCIES
 DEVELOPMENT FUND BOARD

 24 JUN 2021

 CORPORATE SOCIAL RESPONSIBILITY
 PROGRAMME

NOTES

General

- 1) All dimensions are shown in millimetres unless otherwise specified
- 2) Drawings are not to be scaled only figured dimensions to be used
- 3) The contractor must check and verify all dimensions on site before commencing any work.
- 4) Concrete to be laid 1:1.5:3 and to be according to general specification
- 5) Reinforcement mild steel to be BS 785
- 6) Cover to reinforcement bars to be 25 mm

Electrical

- 1) All conduits must be laid before plastering
- 2) For all RC work refer to the Structural Engineers' details
- 3) Depths of foundations to be determined on site to Structural Engineer's approval
- 4) All walls less than 200mm thick to be reinforced with hoop bars at every alternate course
- 5) All adjacent RC works and masonry wall to be tied with strap bars at every course

Structural

- 1) All conduits must be laid before plastering
- 2) For all RC work refer to the Structural Engineers' details
- 3) Depths of foundations to be determined on site to Structural Engineer's approval
- 4) All walls less than 200mm thick to be reinforced with hoop bars at every alternate course
- 5) All adjacent RC works and masonry wall to be tied with strap bars at every course

Project Title: PROPOSED 3 STANDARD CLASSROOM

Location: Site

Drawing Title: FLOOR PLAN - ELEVATIONS SECTION

Client:

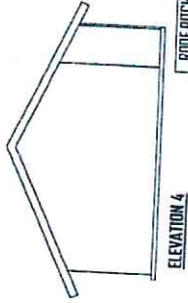
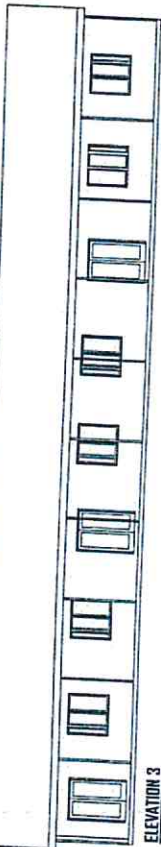
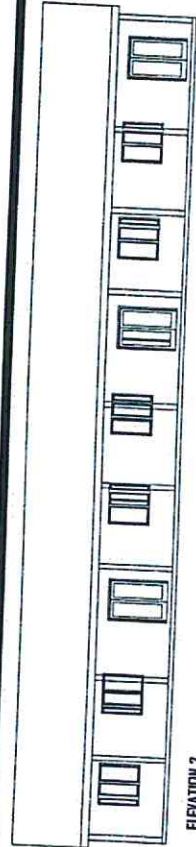
Designed by: BANATYNE-CDF

Drawn by: CHEGE

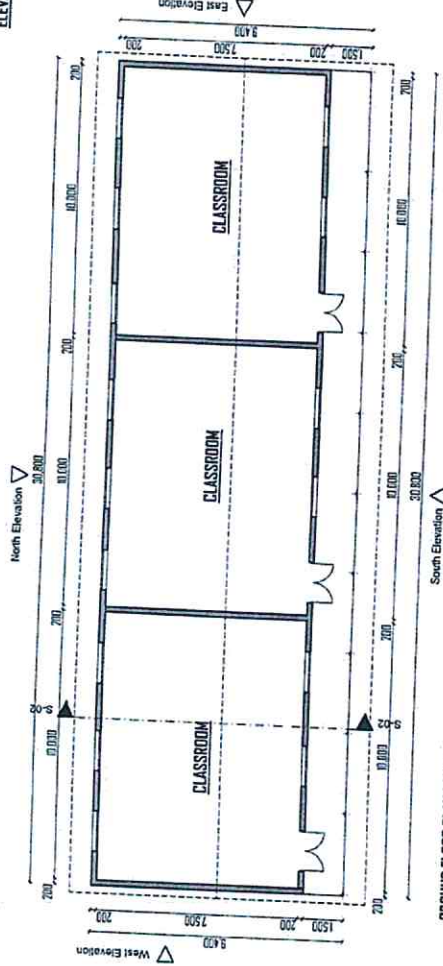
Scale: 1:100

Sheet No: 01

Date: FEB 2022



- ROOF PITCH 25 DEGREES
- 30 GAUGE G.C.I SHEET
- 100X50MM WALL PLATE
- 100X50MM TIE
- 75X50MM PURLINS
- 100X50MM STRUTS
- 150X50MM RAFTERS
- 225X25MM FACIAL BOARD
- APPROVED FLOOR FINISH ON 12.4
- 150MM THICK R.C. SLAB MIX 1:2:4
- 50MM THICK MURRAM OR STONE DUST
- 300MM THICK HARDCORE FILLING
- 1000 GAUGE D.P.M
- A42 G.R.C FABRIC MESH
- SECTION S02-S02



NATIONAL GOVERNMENT CONSTITUENCIES
 DEVELOPMENT FUND BOARD
 24 JUN 2021
 CORPORATE SOCIAL RESPONSIBILITY
 PROGRAMME