

PROPOSED CONSTRUCTION AND EQUIPPING

OF 3NO. CLASSROOMS

AND

4 DOOR TOILET BLOCK

AT

---

KHALANKHAL PRIMARY SCHOOL

IN

---

IJARA CONSTITUENCY

---

GARISSA COUNTY

NATIONAL GOVERNMENT CONSTITUENCIES  
DEVELOPMENT FUND BOARD

17 JUN 2022


CORPORATE SOCIAL RESPONSIBILITY  
PROGRAMME

ITEM NO	DESCRIPTION	QTY	UNIT	RATE	SHS
	<b><u>ENVIRONMENTAL CONSERVATION</u></b>				
A	The Contractor shall plant trees immediately the site is handed over as directed by County Works Officer and Head Teacher and water during contract period till well established	ITEM		SUM	20,000
	<b><u>SUBSTRUCTURE</u></b>				
	1.If site is sloping, flatten site before construction commences and where possible Building should be along contours and not across same.				
	2. Substructure Walling should on average be 300mm above flattened ground.				
	<b><u>ALL PROVISIONAL</u></b>				
A	Clear site of bushes, grass and debris and cart away and burn	195	SM		
B	Excavate oversite 150mm deep to remove vegetable soil and cart away and deposit as directed	195	SM		
C	Excavate to reduce levels commencing from stripped ground level	20	CM		
D	Excavate for trench not exceeding 1.50 metres deep from stripped ground	68	CM		
E	Extra over for excavation in rock of any class	4	CM		
F	Cart away excavated material and deposit in council approved dump	41	CM		
G	Return, fill and ram selected material to back of foundations	27	CM		
H	Allow for planking and strutting to uphold sides of excavations	ITEM		SUM	
I	Allow for keeping excavations free from general water including spring water by pumbing or otherwise	ITEM		SUM	
J	Hardcore fill in making up levels laid and compacted in layers of 150 mm thick and overall thickness 300 mm	244	SM		
	Carried to Collection				
	1				

NATIONAL GOVERNMENT CONSTITUENCIES  
 DEVELOPMENT FUND BOARD  
 17 JUN 2022  
 CORPORATE SOCIAL RESPONSIBILITY  
 PROGRAMME


ITEM NO	DESCRIPTION	QTY	UNIT	RATE	SHS
A	Treat surface of stripped ground with chloropyrif or antitermite treatment applied in accordance with the manufacturer' printed instructions	259	SM		
B	Murram blinding laid on hardcore( ms)	244	SM		
C	Gauge 500 damp proof membrane	259	SM		
	<u>Concrete Work</u>				
	<u>Plain Concrete Class mix (1:4:8) in:</u>				
D	50 mm Thick blinding under column bases and strip foundations	50	SM		
	<u>Vibrated Reinforced concrete mix (1:2:4) in:-</u>				
E	Strip foundations	10	CM		
F	100 mm Thick floor bed	259	SM		
G	100 Ditto ramp 1200 mm wide and 3000 mm long including 20mm thick cement and sand screed (1:3) with grooves in approved pattern	1	NO		
H	Concrete site step size 1200x500 mm ,200 mm step and 165 mm high	8	LM		
	Carried to Collection				
	2				


NATIONAL GOVERNMENT CONSTITUENCIES  
DEVELOPMENT FUND BOARD  
17 JUN 2022  
CORPORATE SOCIAL RESPONSIBILITY  
PROGRAMME


ITEM NO	DESCRIPTION	QTY	UNIT	RATE	SHS
A	50 mm Thick precast concrete paving slabs (1:2:4) with joints in cement mortar (1:4) pointed and laid on murrum and hardcore bed including excavating 150 mm deep	28	SM		
	<u>REINFORCEMENT</u>				
	<u>Supply and fix the following high tensile ribbed round steel bars to B.S. 4461 including binding wires, spacer blocks ,cutting and bending</u>				
B	10 mm Diameter bars	208	KG		
C	8mm Ditto	99	KG		
D	BRC Fabric REF. A142 weighing 2.20 KGS per square metres including side and end laps, stools and binding wire	259	SM		
					
Carried to collection					
3					

ITEM NO	DESCRIPTION	QTY	UNIT	RATE	SHS
	<b><u>Sawn Formwork to:-</u></b>				
A	Sides of foundations	34	SM		
B	Edge of bed 75- 150 mm high	74	LM		
C	Edge of riser 150 - 225 mm high	8	LM		
	<b><u>WALLING</u></b>				
D	150 mm Thick natural stone walling to 14 N/mm <sup>2</sup> crushing strength joint in cement and sand mortar (1:4) and reinforced with 25x20 mm hoop iron at alternate courses	97	SM		
E	150X300 mm Piers	25	LM		
	<b><u>PLINTHS</u></b>				
F	12 mm Thick cement and sand (1:4) render to plinth woodfloat finished	22	SM		
G	Prepare and apply three coats bitumastic paint to rendered plinth	22	SM		
	Carried to collection				
	4				

NATIONAL GOVERNMENT CONSTITUENCIES  
 DEVELOPMENT FUND BOARD  
 17 JUN 2022  
 CORPORATE SOCIAL RESPONSIBILITY  
 PROGRAMME

ITEM NO	DESCRIPTION	QTY	UNIT	RATE	SHS
	<u>COLLECTION</u>				
	From page 1				
	" " 2				
	" " 3				
	" " 4				
	TOTAL FOR SUBSTRUCTURE CARRIED TO MAIN SUMMARY				
					
	5				

ITEM NO	DESCRIPTION	QTY	UNIT	RATE	SHS
	<u>REINFORCED CONCRETE SUPERSTRUCTURE</u>				
	<u>Vibrated Reinforced Concrete mix class 25/20 with crushing strength of 25N/mm<sup>2</sup></u>				
A	Ring Beams	4	CM		
	<u>REINFORCEMENT</u>				
	<u>Supply and fix the following high tensile ribbed steel bars as before :</u>				
B	12 mm Diameter bars	248	KG		
C	8 mm Ditto	125	KG		
					
	Carried to collection				
6					


ITEM NO	DESCRIPTION	QTY	UNIT	RATE	SHS
A	<u>Sawn formwork to:-</u> Sides and soffits of beams  <u>MILD STEEL</u>	56	SM		
B	75mm Diameter hollow section tubular pillar 2800 mm high with 100x100 x3 mm base plate welded on with 4NO. 12 mm diameter anchor bolts with nut and washers and form holes in base plate	10	NO		
C	<u>Painting and Decorating</u> Prepare and apply one undercoat and two coats gloss oil paint to general surfaces of metal  <u>SUNDRY</u> <u>WELD ON</u>	28	LM		
D	100X50 x2mm Plate with 4NO.10 mm bolts 150 mm long with nut and washers and form holes in mild steel and timber	10	NO		
E	<u>Second grade celcured Cypress:</u> 100X50 mm Wall plate to steel pillars (MS)  Carried to collection  <u>COLLECTION</u> From page 6  " Above	28	LM		
					
TOTAL FOR REINFORCED CONCRETE SUPERSTRUCTURE CARRIED TO MAIN SUMMARY					
7					

ITEM NO	DESCRIPTION	QTY	UNIT	RATE	SHS
	<u>WALLING</u>				
	<u>EXTERNAL WALLING</u>				
	<u>Natural stone machine cut , with crushing strength of 14.00 N/MM2 bedded in cement and sand (1:4) mortar joints reinforced with hoop as before:</u>				
A	150 mm Thick walls	146	SM		
B	150mm Ditto in gables	13	SM		
C	150x300 mm Piers	59	LM		
D	150 mm Wide damp proof course laid in cement and sand (1:4) bed	70	LM		
E	Extra over medium chisel dressed walling for neatly recessed horizontal joints	146	SM		
	<u>INTERNAL WALLING</u>				
F	150 mm Thick machine cut stone in cement and sand mortar joints (1:4)	39	SM		
G	150X200 mm Precast concrete permanent vents with mosquito gauze wire build in walling	8	PR		
H	150 mm Wide damp proof as before described	15	LM		
	<u>Sundry</u>				
I	Raking cutting on 150 mm thick walls	22	LM		
J	Eaves filling on 150mm thick walling and 300mm average height	56	LM		
	TOTAL FOR WALLING CARRIED TO MAIN SUMMARY				
	8				




ITEM NO	DESCRIPTION	QTY	UNIT	RATE	SHS
	<u>ROOFING</u>				
	<u>ROOF CONSTRUCTION</u>				
	<u>TIMBER TRUSSES</u>				
	<u>Fabricate, bolt and hoist the following 16NO.Trusses span 9.30 metres and hoist and fix 3.00 metre above ground:</u>				
	<u>Second grade celcured cypress:</u>				
A	100x50 mm Rafters	178	LM		
B	100x50 Ceiling joists/tie beams	149	LM		
C	100x50 Struts and ties	178	LM		
D	100X50 mm King post	28	LM		
	<u>Sundry</u>				
E	12 mm Diameter rawl bolts 200 mm long with washers	51	NO		
	<u>END OF TRUSSES</u>				
	<u>General Construction</u>				
F	100X50 mm Wall plate	56	LM		
I	75X50 mm Purlins	284	LM		
	<u>ROOF COVERING</u>				
J	Pre-painted gauge 28 galvanised corrugated roofing sheets with side and end laps including brass 'J' bolts with plastic caps to suppliers's specification	317	SM		
K	Ridge and hip cap in matching sheet	29	LM		
	<u>Wrot Cypress</u>				
L	200X25 mm Fascia and Barge board	79	LM		
	<u>Painting and Decorating</u>				
M	Prepare and apply one under coat and three finishing coats of gloss oil paint to general surfaces of wood work 200 to 300 mm girth	79	LM		
	Carrie to Collection				




ITEM NO	DESCRIPTION	QTY	UNIT	RATE	SHS
	<u>Rainwater Goods</u>				
A	100 mm Diameter half round plastic eaves gutters supported with brackets at 1000 mm centres	57	LM		
B	Extra over for 600 mm long swanneck	4	NO		
C	Ditto stopped ends	4	NO		
D	Ditto outlets	4	NO		
E	Ditto bends	4	NO		
F	75 mm Diameter down pipe held with pipe clips to walling	12	LM		
G	Extra over for offset	4	NO		
	Carried to Collection				
	<u>COLLECTION</u>				
	From Page 9				
	" "				
					
	TOTAL FOR ROOF CARRIED TO MAIN SUMMARY				
	10				

NATIONAL GOVERNMENT CONSTITUENCIES  
DEVELOPMENT FUND BOARD  
17 JUN 2022  
CORPORATE SOCIAL RESPONSIBILITY  
PROGRAMME


---

ITEM NO	DESCRIPTION	QTY	UNIT	RATE	SHS
	<u>DOORS</u>				
	<u>Mild Steel</u>				
	<u>Fabricate,weld, supply and fix steel doors comprising gauge 16 cover plate in boxes ,heavy gauge sections with weld joints ground smooth, apply red oxide primer before delivery including lugs built - in walling to Architect's approval:-</u>				
A	Steel door size 1200x2100 mm double door, leaf size 600x2100 mm, consisting 38x38 x 2 mm angle frame, 25x25mm hollow section tube internal framing including necessary ironmongery with 3NO. 25mm Heavy duty hinges, box profile 450x450mm	3	NO		
	<u>Glazing</u>				
B	4mm Thick clear sheet glass in panes 0.10 to 0.50 Square metres and glazing metal with linseed putty	3	SM		
					
	Carried to Collection				



ITEM NO	DESCRIPTION	QTY	UNIT	RATE	SHS
	<b><u>WINDOWS</u></b>				
	<b><u>WROT MAHOGANY</u></b>				
	<u>Fabricate ,Supply and fix including built-in walling timber frames and apply one coat of primer to back of frames all to Architect's approval:</u>				
A	Composite window size 1800x1500 mm consisting of 150x50 mm frames, 150x50mm mullions, 150x50mm transomes	9	NO		
B	Ditto 1800x1000 mm Ditto	6	NO		
	<u>Mild Steel</u>				
C	16mm Diameter bars in burglar proofing set in holes in timber	207	LM		
D	Drill holes through 50 mm thick hard wood timber	390	NO		
	<u>Precast Concrete</u>				
E	265X75 mm Window cill in concrete ( 1:2:4) including moulds, throating, top weathered and hoist and fix in position				
	moulds, throating, top weathered and hoist and fix in position	29	LM		
					
	Carried to Collection				
	13				


ITEM NO	DESCRIPTION	QTY	UNIT	RATE	SHS
A	<p style="text-align: center;"><u>Painting and Decorating</u></p> <p><u>Internally</u></p> <p>Prepare and apply one under coat and three coats of gloss oil paint from Crown Berger or Dura Coat to general surfaces of metal</p>	35	SM		
B	<p><u>Externally</u></p> <p>Ditto Surfaces of metal</p> <div style="border: 1px solid blue; padding: 5px; margin: 10px auto; width: fit-content;"> <p style="text-align: center;">NATIONAL GOVERNMENT CONSTITUENCIES DEVELOPMENT FUND BOARD</p> <p style="text-align: center;">17 JUN 2022</p> <p style="text-align: center;">CORPORATE SOCIAL RESPONSIBILITY PROGRAMME</p> </div> <p>Carried to Collection</p> <p style="text-align: center;"><u>COLLECTION</u></p> <p>From Page 13</p> <p>" " 14</p>	35	SM		
TOTAL FOR WINDOWS CARRIED TO MAIN SUMMARY					
14					


ITEM NO	DESCRIPTION	QTY	UNIT	RATE	SHS
<b><u>FINISHES</u></b>					
<b><u>EXTERNAL FINISHES</u></b>					
A	12 mm Thick cement and sand (1:4) rendering to concrete surfaces woodfloat finished	21	SM		
B	12 mm Ditto to walls and reveals	17	SM		
<b><u>Painting and Decorating</u></b>					
C	Prepare and apply three coats plastic emulsion paint from Crown Berger or Dura Coat to rendered surfaces	38	SM		
<b><u>Internal Wall Finishes</u></b>					
D	12 mm Thick plaster plus cement and sand (1:4) steel float finished	249	SM		
<b><u>Painting and Decorating</u></b>					
E	Prepare and apply three coats plastic emulsion vinyl silk cream paint from Crown Berger or Dura Coat to plastered surfaces	249	SM		
F	Extra over plastering for black board and prepare and apply three coats of bitumastic paint ditto	32	SM		
					
Carried to Collection					
15					

ITEM NO	DESCRIPTION	QTY	UNIT	RATE	SHS
	<u>Floor Finishes</u>				
A	20 mm Thick cement and sand ( 1:3 ) floor screed wood float finished to receive tiles (M.S)	242	SM		
	<u>CERAMIC TILES</u>				
B	8 mm Thick ceramic floor tiles size 300x300 mm laid with cement grout and joints pointed with white cement	242	SM		
C	8 mm Ditto and 100 mm high skirting	118	LM		
	<u>Ceiling</u>				
D	12 mm Thick chip board ceiling fixed in symmetrical pattern	242	SM		
E	Extra over ceiling for 600x600 mm trap door with 75x25 mm cornice all round and framing	3	NO		
F	75X25 mm Cornice with moulding	125	LM		
	<u>Second grade celcured cypress</u>				
G	50X50 mm Branderings	761	LM		
H	50X50 mm Branderings but plugged	125	LM		
	<u>Painting and Decorating</u>				
I	Prepare and apply three coats of plastic emulsion paint to general surfaces of soft board (Brilliant white)	242	SM		
J	General surfaces to 100 mm girth	125	LM		
	Carried to Collection				

16



ITEM NO	DESCRIPTION	QTY	UNIT	RATE	SHS
	<u>COLLECTION</u>				
	From Page 15				
	" " 16				
	TOTAL FOR FINISHES CARRIED TO MAIN SUMMARY				
					
	17				

ITEM NO	DESCRIPTION	QTY	UNIT	RATE	SHS
	<u>FIXTURES</u>				
	The following in 3NO.Black Board size 5000x1500 mm				
A	12 mm Thick plaster (1:4) to walls as before	23	SM		
B	Prepare and apply three coats of black matt to walls	23	SM		
C	50X25 mm Wrot Cypress moulded bead with groove at bottom for chalk framing round board plugged and duster holder	39	LM		
	The following in 3NO.Notice Board size 2400x1200 mm				
D	12 mm Thick soft board	9	SM		
E	50X25 mm Wrot Cypress moulded framing plugged	22	LM		
	<u>Painting and Decorating</u>				
F	Prepare and apply one under coat and three coats of brilliant white emulsion paint to general surfaces of soft board	9	SM		
G	Prepare and apply one under coat and three coat of gloss oil paint to general surfaces of wood work to 100 mm girth	22	LM		
					
	Carried to Collection				


ITEM NO	DESCRIPTION	QTY	UNIT	RATE	SHS
	<p style="text-align: center;"><u>COLLECTION</u></p> <p>From Page 18</p> <div style="border: 1px solid black; padding: 10px; margin: 20px auto; width: fit-content;"> <p>NATIONAL GOVERNMENT CONSTITUENCIES DEVELOPMENT FUND BOARD</p> <p style="text-align: center;">17 JUN 2022</p> <p>CORPORATE SOCIAL RESPONSIBILITY PROGRAMME</p> </div> <p>TOTAL FOR FIXTURES CARRIED TO SUMMARY</p>				
	19				


ITEM NO	DESCRIPTION	QTY	UNIT	RATE	SHS
	<u>WATER STORAGE TANK</u>				
A	Excavate over site as before	3	SM		
B	Excavate foundation trench ditto	2	CM		
C	150 mm Thick concrete block walling as before	3	SM		
D	Mass concrete (1:3:6) in foundations	1	CM		
E	450 mm Thick hardcore as before	3	SM		
F	50 mm Thick murrum as before	3	SM		
G	100 mm Thick concrete (1:3:6) in slap	3	SM		
H	20 mm Thick cement and sand screed (1:3) as before	4	SM		
I	BRC REF A142 Fbric mesh as before	3	SM		
J	Supply and install cold water storage plastic water 10000 Litre capacity from Kentank or other equal and approved, Heavy duty (3 Ply)	1	NO		
K	12 mm Diameter pegler tap	1	NO		
L	19 mm Ditto union	1	NO		
M	32 mm Diameter overflow pipe 400 mm long	1	NO		
	TOTAL FOR WATER TANK CARRIED TO MAIN SUMMARY				
	20				

NATIONAL GOVERNMENT CONSTITUENCIES  
 DEVELOPMENT FUND BOARD  
 17 JUN 2022  
 CORPORATE SOCIAL RESPONSIBILITY  
 PROGRAMME

ITEM NO	DESCRIPTION	QTY	UNIT	RATE	SHS
	<u>ELECTRICAL INSTALLATION</u> <u>ELECTRICAL WORKS TO BE EXECUTED BY SPECIALIST REGISTERED BY KPLC</u> <u>Supply , install , test and commission the following:</u>				
A	Lighting points wired in 3x1.5mm <sup>2</sup> SC PVC CU cables drawn in 20mm dia HG PVC conduits with all necessary accessories excluding switches and fittings for one way switching	29	NO		
B	10A moulded ivory switch plate as crabtree or approved equivalent as follows: i. Two way one gang	3	NO		
	ii. Three way one gang	1	NO		
C	Lighting fittings complete with fixing accessories and lamps as follows: i). 1200mm lx 36w florescent batten fitting or slim cross section with clip on cover plate and adjustable end cap system as Thorn Popular Pack batten or approved equivalent	21	NO		
D	ii) Bulkhead fitting with aluminium body on Thorn or approved equivalent with Energy saving bulb	8	NO		
E	Socket outlets Power outlets i. Comprising of wiring in 3x2.5mm <sup>2</sup> PVC SC CU in concealed HG conduits	6	NO		
	ii. 13A 2gang switched moulded socket outlet as crabtree or approved equivalent	3	NO		
	Consumer Units and Distribution Boards				
F	4-Way SP/N consumer unit flush mounted on wall complete with a 10A SP/N integral isolator as crabtree or approved equivalent	1	NO		
G	Single Pole miniature circuit breaker as follows: i. 5ASP	1	NO		
	ii. 30asp	2	NO		
	iii. Blanking covers	1	NO		
	Carried to Collection				
	21				



ITEM NO	DESCRIPTION	QTY	UNIT	RATE	SHS
A	Sub-mains Cables 3x6.0mm <sup>2</sup> SCPVC CU cables drawn in HG conduit	10	LM		
B	Standard cable looping box complete with single cut out fuse neutral link	1	NO		
C	Electrical earthing comprising of 6.0mm <sup>2</sup> SC PVC CU cable drawn in HG conduits 1500mm times 15mm copper electrodes c/w clamps pre-cast concrete inspection pit with cover	ITEM		SUM	
D	Testing and commissioning	ITEM		SUM	
E	Allow for supply and fixing Copper Lighting arrestors, with copper earthing wire, earthing box and associated fittings	1	NO		
	Carried to Collection				
	<u>COLLECTION</u>				
	From Page 21				
	" " 22				
					
	TOTAL FOR ELECTRICAL INSTALLATION CARRIED TO SUMMARY				
	22				

ITEM NO	DESCRIPTION	QTY	UNIT	RATE	SHS
	<p><u>PRIME COST AND PROVISIONAL SUMS</u>  <u>EXPENDITURE FOR ITEMS HERE BELOW SHALL BE APPROVED BY NG-CDF BOARD</u>  <u>The following sums shall be expended upon Architect's instructions and may be omitted in whole:</u></p>				
A	Allow for a Provisional Sum of Kenya Shillings One Hundred Thousand ( Kshs.100,000/) for Contingency	ITEM		SUM	100,000
B	Allow for a Prime Cost Sum of Kenya Shillings Fifty Thousand ( Kshs.50,000/) for Supply and Delivery of 9KG and 2NO. Water base and 9 Litre X2NO. Carbon dioxide Fire extinguishers mounted on walling to approval	ITEM		SUM	50,000
C	Allow for Branding of Project in accordance with NG-CDF Board Specifications	ITEM		SUM	15,000
	<u>FURNITURE</u>				
	<u>Wrot Cypress and 25x25 mm RHS heavy duty steel frame welded with weld joints ground smooth:</u>				
D	Allow for a Provisional Sum of Kenya Shillings (Kshs 286,000.00) for Fabrication and Supply of 68NO Ordinary Desk for 2NO. Pupils ,3NO.Teachers' and 3NO.Chairs to be supplied by an approved Supplier with specifications from County Works Officer and Head Teacher	ITEM		SUM	286,000
E	Allow for Transport to site	ITEM		10%	28,600
					
	TOTAL FOR PRIME COST AND PROVISIONAL SUMS CARRIED TO MAIN SUMMARY				

---

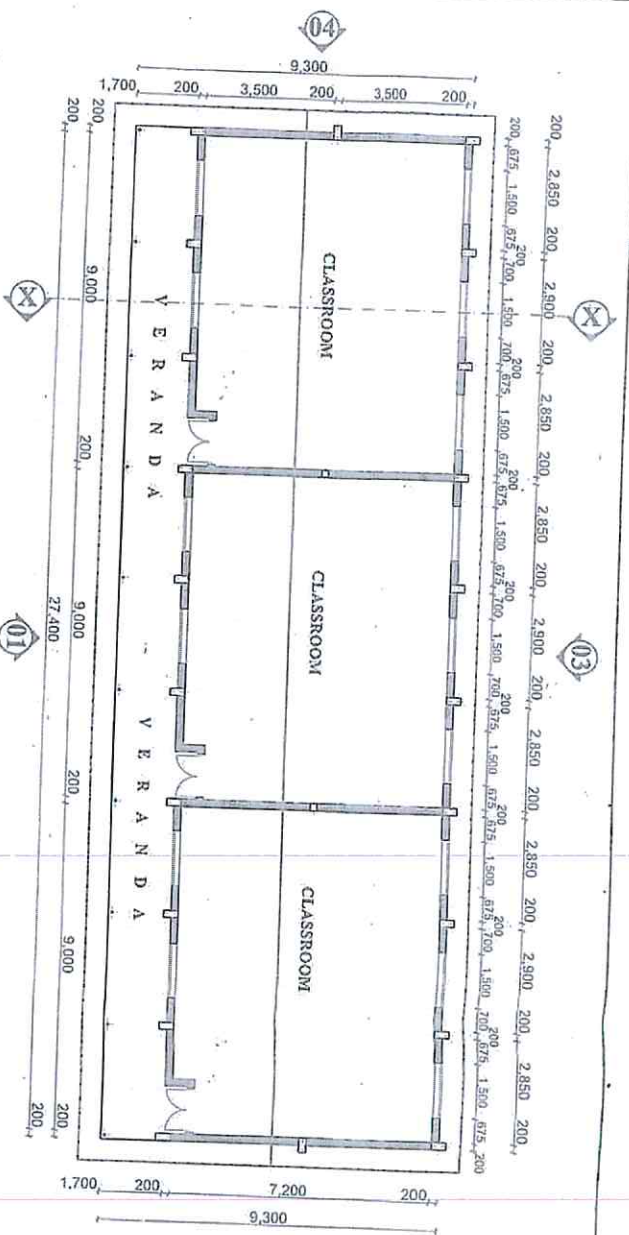
NATIONAL GOVERNMENT CONSTITUENCIES  
DEVELOPMENT FUND BOARD  
17 JUN 2022  
CORPORATE SOCIAL RESPONSIBILITY  
PROGRAMME

ITEM NO	DESCRIPTION	SHS
	<b>PROPOSED CONSTRUCTION OF 3NO.CLASSROOMS</b>	
	<u>MAIN SUMMARY</u>	
A	SUBSTRUCTURE	
B	REINFORCED CONCRETE SUPERSTRUCTURE	
C	WALLING	
D	ROOFING	
E	DOORS	
F	WINDOWS	
G	FINISHES	
H	FIXTURES	
I	WATER TANK	
J	ELECTRICAL INSTALLATION	
K	PRIME COST AND PROVISIONAL SUMS	
	TOTAL COST OF 3NO.CLASSROOMS CARRIED TO GRAND SUMMARY	

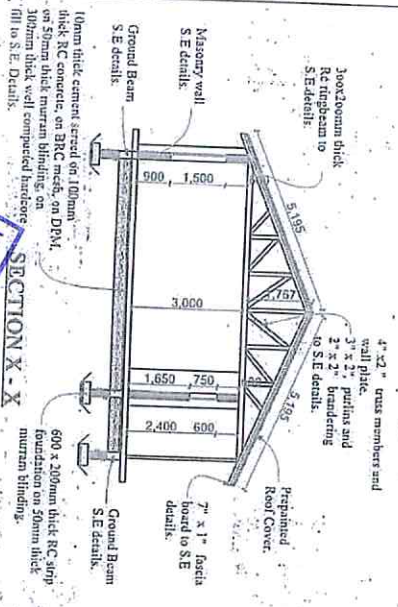
NATIONAL GOVERNMENT CONSTITUENCIES  
 DEVELOPMENT FUND BOARD  
 17 JUN 2022  
 CORPORATE SOCIAL RESPONSIBILITY  
 PROGRAMME

---

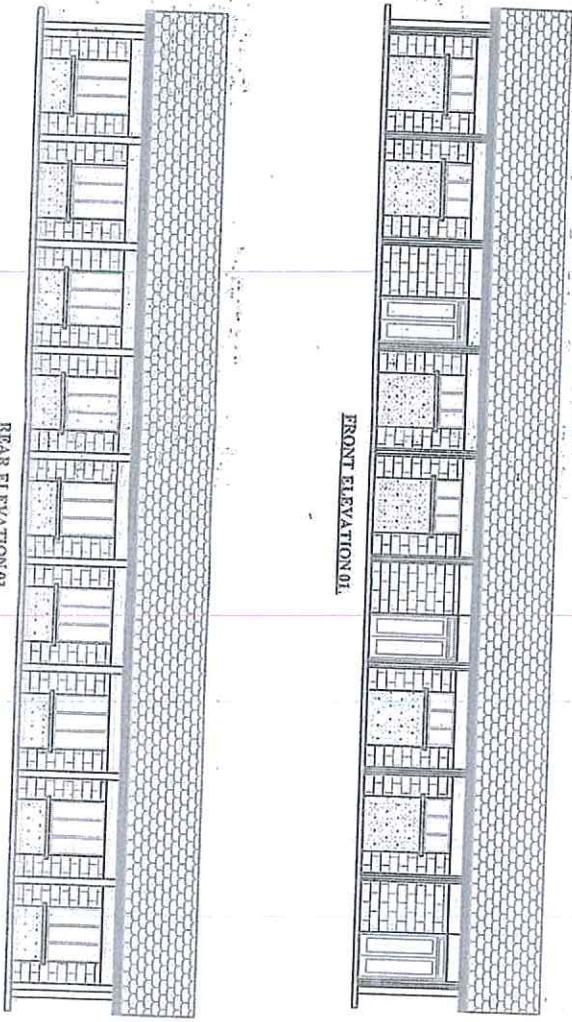
NATIONAL GOVERNMENT CONSTITUENCIES  
DEVELOPMENT FUND BOARD  
17 JUN 2011  
CORPORATE SOCIAL RESPONSIBILITY  
PROGRAMME



GROUND FLOOR PLAN

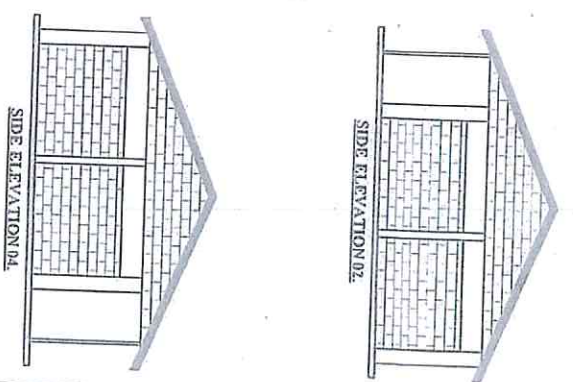


SECTION X - X



FRONT ELEVATION 01

REAR ELEVATION 01



SIDE ELEVATION 02

SIDE ELEVATION 04

NOTES

- All Dimensions are in mm unless otherwise stated.
- This drawing must not be scaled, only figured dimensions should be used.
- This drawing must be read in conjunction with relevant structural drawing.
- Reinforced concrete to be grade 20/20 to BS8110.
- Cover to main reinforcement to be as follows:  
(i) Columns - 50mm  
(ii) Beams - 30mm  
(iii) Slabs - 20mm.
- "X" Denotes square twisted high yield bars to BS4449.
- "R" Denotes round mild steel bars to BS4449.
- Reinforcement in walls must be inspected by the engineer before being enclosed in the form work.
- To ensure enhanced bonding between the masonry and the R.C columns, the masonry walling must be raked first before the casting of columns.
- All masonry used to be of cement sand mix 1:3 with all the stone walling being laid in 200mm courses with 12mm mortar joint.
- All masonry walls are infill only.
- All structural works must be inspected and approved by the engineer.
- Ground bearing pressure - 100kN/m<sup>2</sup>.
- Foul water drainage to drain to septic tank and to structural details.

ISSUES			
Date	To	Application	By

REVISIONS			
No	Date	Description	Grd. C. Eng.

REFERENCE DRAWING

PROJECT: PROPOSED CONSTRUCTION OF 3NO. CLASSROOMS AT KEMALANKHAL PRIMARY SCHOOL- IYARA CONSTITUENCY

Client: CDF-NGAIF- IYARA CONSTITUENCY

Drawing Title: Architectural Drawings:

1. Ground Floor Plan.

2. Elevations.

3. Section.

4. 3-Dimensional Element



MINISTRY OF PUBLIC WORKS  
DEPARTMENT OF PUBLIC WORKS  
GARISSA

DATE: APRIL 2022

SCALE: 1:100

DESIGNED BY: O. FARUKI  
DRAWN BY: GARISSA

CHECKED BY: CWO

10/10/10



PROPOSED CONSTRUCTION OF 4 DOOR TOILET BLOCK

AT

KHALANKHAL PRIMARY SCHOOL

IN

IJARA CONSTITUENCY

GARISSA COUNTY

NATIONAL GOVERNMENT CONSTITUENCIES  
DEVELOPMENT FUND BOARD  
17 JUN 2022  
CORPORATE SOCIAL RESPONSIBILITY  
PROGRAMME

ITEM NO	DESCRIPTION	QTY	UNIT	RATE	SHS
	<u>ALL PROVISIONAL</u>				
A	Clear site of bushes, grass and debris and cart away and burn	25	SM		
B	Excavate oversite 150mm deep to remove vegetable soil and cart away and deposit as directed	25	SM		
C	Excavate to reduce levels commencing from stripped ground level	4	CM		
D	Excavate for trench not exceeding 1.50 metres deep from stripped ground	10	CM		
E	Extra over for excavation in rock of any class	2	CM		
F	Cart away excavated material and deposit in council approved dump	5	CM		
G	Return, fill and ram selected material to back of foundations	5	CM		
H	Allow for planking and strutting to uphold sides of excavations	ITEM		SUM	
I	Allow for keeping excations free from general water including spring water by pumbing or otherwise	ITEM		SUM	
J	Hardcore fill in making up levels laid and compacted in layers of 150 mm thick and overall thickness 300 mm	13	SM		
<div style="border: 2px solid blue; padding: 5px; width: fit-content; margin: 0 auto;"> <p>NATIONAL GOVERNMENT CONSTITUENCIES DEVELOPMENT FUND BOARD</p> <p>17 JUN 2022</p> <p>CORPORATE SOCIAL RESPONSIBILITY PROGRAMME</p> </div>					
	Carried to Collection				
	1				

ITEM NO	DESCRIPTION	QTY	UNIT	RATE	SHS
A	Treat surface of stripped ground with chloropyrif or antitermite treatment applied in accordance with the manufacturer' printed instructions	16	SM		
B	Murram blinding laid on hardcore( ms)	13	SM		
C	Gauge 500 damp proof membrane	16	SM		
	<u>Concrete Work</u>				
	<u>Plain Concrete Class mix (1:4:8) in:</u>				
D	50 mm Thick blinding under column bases and strip foundations	12	SM		
	<u>Vibrated Reinforced concrete mix (1:2:4) in:-</u>				
E	Strip foundations	2	CM		
F	100 mm Thick floor bed	16	SM		
G	100 Ditto ramp 1200 mm wide and 3000 mm long including 20mm thick cement and sand screed (1:3) with grooves in approved pattern	1	NO		
H	Concrete site step size 1200x500 mm ,200 mm step and 165 mm high	8	LM		
I	Concrete thickening under 100 mm thick walling - size 300x100 mm and form sinking in hardcore	7	LM		
	Carried to Collection				
	2				

NATIONAL GOVERNMENT CONSTITUENCIES  
DEVELOPMENT FUND BOARD  
17 JUN 2022  
CORPORATE SOCIAL RESPONSIBILITY  
PROGRAMME

ITEM NO	DESCRIPTION	QTY	UNIT	RATE	SHS
A	50 mm Thick precast concrete paving slabs (1:2:4) with joints in cement mortar (1:4) pointed and laid on murrum and hardcore bed including excavating 150 mm deep  <u>REINFORCEMENT</u>  <u>Supply and fix the following high tensile ribbed round steel bars to B.S. 4461 including binding wires, spacer blocks ,cutting and bending</u>	10	SM		
B	10 mm Diameter bars	49	KG		
C	8mm Ditto	23	KG		
D	BRC Fabric REF. A142 weighing 2.20 KGS per square metres including side and end laps, stools and binding wire	16	SM		
	Carried to collection				
	<b>3</b>				

NATIONAL GOVERNMENT CONSTITUENCIES  
 DEVELOPMENT FUND BOARD  
 17 JUN 2022  
 CORPORATE SOCIAL RESPONSIBILITY  
 PROGRAMME

ITEM NO	DESCRIPTION	QTY	UNIT	RATE	SHS
	<b><u>Sawn Formwork to:-</u></b>				
A	Sides of foundations	8	SM		
B	Edge of bed 75- 150 mm high	16	LM		
C	Edge of riser 150 - 225 mm high	8	LM		
	<b><u>WALLING</u></b>				
D	150 mm Thick natural stone walling to 14 N/mm <sup>2</sup> crushing strength joint in cement and sand mortar (1:4) and reinforced with 25x20 mm hoop iron at alternate courses	13	SM		
E	150X300 mm Piers	4	LM		
	<b><u>PLINTHS</u></b>				
F	12 mm Thick cement and sand (1:4) render to plinth woodfloat finished	5	SM		
G	Prepare and apply three coats bitumastic paint to rendered plinth	5	SM		
	Carried to collection				
	4				

NATIONAL GOVERNMENT CONSTITUENCIES  
 DEVELOPMENT FUND BOARD  
 17 JUN 2022  
 CORPORATE SOCIAL RESPONSIBILITY  
 PROGRAMME

ITEM NO	DESCRIPTION	QTY	UNIT	RATE	SHS
	<u>COLLECTION</u>				
	From page 1				
"	" 2				
"	" 3				
"	" 4				
	TOTAL FOR SUBSTRUCTURE CARRIED TO MAIN SUMMARY				
	5				

NATIONAL GOVERNMENT CONSTITUENCIES  
 DEVELOPMENT FUND BOARD  
 17 JUN 2022  
 CORPORATE SOCIAL RESPONSIBILITY  
 PROGRAMME

ITEM NO	DESCRIPTION	QTY	UNIT	RATE	SHS
	<u>REINFORCED CONCRETE SUPERSTRUCTURE</u>				
	<u>Vibrated Reinforced Concrete mix class 25/20 with crushing strength of 25N/mm<sup>2</sup></u>				
A	Ring Beams	1	CM		
	<u>REINFORCEMENT</u>				
	<u>Supply and fix the following high tensile ribbed steel bars as before :</u>				
B	12 mm Diameter bars	32	KG		
C	8 mm Ditto	24	KG		
	Carried to collection				
	6				

NATIONAL GOVERNMENT CONSTITUENCIES  
 DEVELOPMENT FUND BOARD  
 17 JUN 2022  
 CORPORATE SOCIAL RESPONSIBILITY  
 PROGRAMME



ITEM NO	DESCRIPTION	QTY	UNIT	RATE	SHS
	<u>WALLING</u>				
	<u>EXTERNAL WALLING</u>				
	<u>Natural stone machine cut , with crushing strength of 14.00 N/MM2 bedded in cement and sand (1:4) mortar joints reinforced with hoop as before:</u>				
A	150 mm Thick walls	34	SM		
B	150mm Ditto in gables	0	SM		
C	150x300 mm Piers	6	LM		
D	150 mm Wide damp proof course laid in cement and sand (1:4) bed	13	LM		
E	Extra over medium chisel dressed walling for neatly recessed horizontal joints	34	SM		
	<u>INTERNAL WALLING</u>				
F	100 mm Thick machine cut stone in cement and sand mortar joints (1:4)	16	SM		
G	150X200 mm Precast concrete permanent vents with mosquito gauze wire build in walling	8	PR		
H	100 mm Wide damp proof as before described	7	LM		
	<u>Sundry</u>				
I	Raking cutting on 150 mm thick walls	5	LM		
J	Eaves filling on 150mm thick walling and 300mm average height	7	LM		
K	300X75 mm Precast concrete mix (1:2:4) in coping weathred and throated laid on cement mortar (1:4) including moulds and hoist and lay	5	LM		
	TOTAL FOR WALLING CARRIED TO MAIN SUMMARY				
	8				

NATIONAL GOVERNMENT CONSTITUENCIES  
 DEVELOPMENT FUND BOARD  
 17 JUN 2022  
 CORPORATE SOCIAL RESPONSIBILITY  
 PROGRAMME

ITEM NO	DESCRIPTION	QTY	UNIT	RATE	SHS
	<u>ROOFING</u>				
	<u>ROOF CONSTRUCTION</u>				
	<u>TIMBER TRUSSES</u>				
	<u>Fabricate, bolt and hoist the following 16NO.Trusses span 9.30 metres and hoist and fix 3.00 metre above ground:</u>				
	<u>Second grade celcured cypress:</u>				
A	100x50 mm Rafters	29	LM		
B	100x50 Ceiling joists/tie beams	0	LM		
C	100x50 Struts and ties	0	LM		
D	100X50 mm King post	0	LM		
	<u>Sundry</u>				
E	12 mm Diameter rawl bolts 200 mm long with washers	0	NO		
	<u>END OF TRUSSES</u>				
	<u>General Construction</u>				
F	100X50 mm Wall plate	10	LM		
I	75X50 mm Purlins	21	LM		
	<u>ROOF COVERING</u>				
J	Pre-painted gauge 28 galvanised corrugated roofing sheets with side and end laps including brass 'J' bolts with plastic caps to suppliers's specification	22	SM		
K	Ridge and hip cap in matching sheet	0	LM		
	<u>Wrot Cypress</u>				
L	200X25 mm Fascia and Barge board	11	LM		
	<u>Painting and Decorating</u>				
M	Prepare and apply one under coat and three finishing coats of gloss oil paint to general surfaces of wood work 200 to 300 mm girth	11	LM		
	Carried to Collection				

9



ITEM NO	DESCRIPTION	QTY	UNIT	RATE	SHS
	<u>Rainwater Goods</u>				
A	100 mm Diameter half round plastic eaves gutters supported with brackets at 1000 mm centres	0	LM		
B	Extra over for 600 mm long swanneck	0	NO		
C	Ditto stopped ends	0	NO		
D	Ditto outlets	0	NO		
E	Ditto bends	0	NO		
F	75 mm Diameter down pipe held with pipe clips to walling	0	LM		
G	Extra over for offset	0	NO		
	Carried to Collection				
	<u>COLLECTION</u>				
	From Page 9				
"	" 10				
	TOTAL FOR ROOF CARRIED TO MAIN SUMMARY				
	10				

NATIONAL GOVERNMENT CONSTITUENCIES  
 DEVELOPMENT FUND BOARD  
 17 JUN 2022  
 CORPORATE SOCIAL RESPONSIBILITY  
 PROGRAMME

---

NATIONAL GOVERNMENT CONSTITUENCIES  
DEVELOPMENT FUND BOARD  
17 JUN 2022  
CORPORATE SOCIAL RESPONSIBILITY  
PROGRAMME

ITEM NO	DESCRIPTION	QTY	UNIT	RATE	SHS
	<u>DOORS</u>				
	<u>Mild Steel</u>				
	<u>Fabricate, weld, supply and fix steel doors comprising gauge 16 cover plate in boxes, heavy gauge sections with weld joints ground smooth, apply red oxide primer before delivery including lugs built - in walling to Architect's approval:-</u>				
A	Steel door size 1200x2100 mm double door, leaf size 600x2100 mm, consisting 38x38 x 2 mm angle frame, 25x25mm hollow section tube internal framing including necessary ironmongery with 3NO. 25mm Heavy duty hinges, box profile 450x450mm (For PWDS)	1	NO		
B	Ditto single leaf size 900x2100 mm ditto	3	NO		
C	Brass supports size 1000 mm fixed to walling	1	PRS		
	Carried to Collection				

ITEM NO	DESCRIPTION	QTY	UNIT	RATE	SHS
	<u>Ironmongery</u>				
A	Two lever mortice lock and furniture including matching screws as Union	0	NO		
B	Heavy duty bush hinges	8	NO		
C	Rubber stops	4	NO		
	<u>Painting and Decorating</u>				
	<u>Externally</u>				
D	Prepare and apply three coats of gloss oil paint from Crown Berger or Dura Coat to general surfaces of meta	9	SM		
	<u>Internally</u>				
E	Prepare and apply three coats as before	9	SM		
	Carried to Collection				
	<u>COLLECTION</u>				
	From Page 11				
	" " 12				
<hr/>					
	TOTAL FOR DOORS CARRIED TO MAIN SUMMARY				
	12				

NATIONAL GOVERNMENT CONSTITUENCIES  
 DEVELOPMENT FUND BOARD  
 17 JUN 2022  
 CORPORATE SOCIAL RESPONSIBILITY  
 PROGRAMME



ITEM NO	DESCRIPTION	QTY	UNIT	RATE	SHS
	<u>Painting and Decorating</u>				
	<u>Internally</u>				
A	Prepare and apply one under coat and three coats of gloss oil paint from Crown Berger or Dura Coat to general surfaces of metal	2	SM		
	<u>Externally</u>				
B	Ditto Surfaces of metal	2	SM		
	Carried to Collection				
	<u>COLLECTION</u>				
	From Page 13				
	" " 14				
TOTAL FOR WINDOWS CARRIED TO MAIN SUMMARY					
14					

NATIONAL GOVERNMENT CONSTITUENCIES  
 DEVELOPMENT FUND BOARD  
 17 JUN 2022  
 CORPORATE SOCIAL RESPONSIBILITY  
 PROGRAMME

ITEM NO	DESCRIPTION	QTY	UNIT	RATE	SHS
	<b><u>FINISHES</u></b>				
	<b><u>EXTERNAL FINISHES</u></b>				
A	12 mm Thick cement and sand (1:4) rendering to concrete surfaces woodfloat finished	4	SM		
B	12 mm Ditto to walls and reveals	3	SM		
	<b><u>Painting and Decorating</u></b>				
C	Prepare and apply three coats plastic emulsion paint from Crown Berger or Dura Coat to rendered surfaces	7	SM		
	<b><u>Internal Wall Finishes</u></b>				
D	12 mm Thick plaster plus cement and sand (1:4) steel float finished	63	SM		
	<b><u>Painting and Decorating</u></b>				
E	Prepare and apply three coats plastic emulsion vinyl silk cream paint from Crown Berger or Dura Coat to to plastered surfaces	35	SM		
	<b><u>Ceramic Wall Tiles</u></b>				
F	6 mm Thick ceramic wall tiles size 300x200mm fixed with cement grout and joints pointed with white cement	28	SM		
	Carried to Collection				
	15				

NATIONAL GOVERNMENT CONSTITUENCIES  
 DEVELOPMENT FUND BOARD  
 17 JUN 2022  
 CORPORATE SOCIAL RESPONSIBILITY  
 PROGRAMME

ITEM NO	DESCRIPTION	QTY	UNIT	RATE	SHS
A	<u>Floor Finishes</u> 20 mm Thick cement and sand ( 1:3 ) floor screed wood float finished to receive tiles (M.S)	14	SM		
B	<u>CERAMIC TILES</u> 8 mm Thick ceramic floor tiles size 300x300 mm laid with cement grout and joints pointed with white cement	14	SM		
C	8 mm Ditto and 100 mm high skirting	23	LM		
	Carried to Collection				





ITEM NO	DESCRIPTION	QTY	UNIT	RATE	SHS
	<u>PLUMBING INSTALLATION</u>				
	<u>Supply the following Sanitary Fittings from Shanks Catalogue or other equal and approved and join fittings to waste pipes and cold water supply pipes :</u>				
A	Vitreous China Low level WC suite complete with 11 Litre high level cistern (Asian Type)	4	NO		
B	Vitreous China Wash hand basin size 450x450 mm fixed to walling with 2NO. 12 mm diameter mild brackets	2	NO		
	<u>COLD WATER SUPPLY</u>				
C	20mm Diameter PPR pipe	25	LM		
D	Extra over for 20 mm diameter equal tees	6	NO		
E	Ditto bends	4	NO		
F	38 mm Diameter Morphine bottle trap	2	NO		
	<u>WASTE DRAINS</u>				
F	100 mm Diameter medium duty PVC Pipe	10	LM		
G	Extra over for 100 mm diameter wc connectors	4	NO		
H	38 mm Diameter medium duty PVC pipe	5	LM		
I	Extra over for 38 mm diameter bends	2	NO		
J	150 mm Diameter gulley trap with cover	2	NO		
K	Allow for testing of Plumbing Installation to satisfaction of County Works Officer	ITEM		SUM	
	<u>EQUIPMENT</u>				
L	1000 Litre capacity heavy duty (3Ply) plastic water tank and hoist and fix 3.00 Metres high on steel platform (M.S) with brass equilibrium ball valve	2	NO		
M	20 mm Diameter back nut Carried to Collection	4	NO		
	18				

NATIONAL GOVERNMENT CONSTITUENCIES  
 DEVELOPMENT FUND BOARD  
 17 JUN 2022  
 CORPORATE SOCIAL RESPONSIBILITY  
 PROGRAMME

ITEM NO	DESCRIPTION	QTY	UNIT	RATE	SHS
A	<p style="text-align: center;"><u>WATER TANK PLATFORM 3.00 METRES HIGH</u></p> <p><u>MILD STEEL</u></p> <p>Fabricate and weld 50x50x3 mm RHS frame , bracings ,50x50x3 mm RHS 4NO. Vertical supports, 1.50X1.50 Metres 16 gauge plate welded on frame and cat ladder and prepare and apply red oxide primer and three coat of gloss oil paint to County Works Officer approval</p> <p>Carried to Collection</p> <p style="text-align: center;"><u>COLLECTION</u></p> <p>From Page 18</p> <p>" " 19</p>	1	no		
TOTAL FOR PLUMBING INSTALLATION CARRIED TO SUMMARY					
19					

NATIONAL GOVERNMENT CONSTITUENCIES  
 DEVELOPMENT FUND BOARD  
 17 JUN 2022  
 CORPORATE SOCIAL RESPONSIBILITY  
 PROGRAMME

---

NATIONAL GOVERNMENT CONSTITUENCIES  
DEVELOPMENT FUND BOARD  
17 JUN 2022  
CORPORATE SOCIAL RESPONSIBILITY  
PROGRAMME

ITEM NO	DESCRIPTION	QTY	UNIT	RATE	SHS
	<u>EXTERNAL WORKS</u>				
	<u>BIO-DIGESTOR</u>				
A	Supply and fix Plastic tank for Bio- digester including excavation and backfilling and fill tank with approved bacterial capacity 2000 litres with cover	1	NO		
	<u>SOAK PIT</u>				
B	100 mm Diameter perforated medium duty pipe 10.00 Metres long in radial arm including excavation 1.50 metres deep and 1.00 Metres wide, filled with hardcore and murrum top	2	NO		
	<u>SEWER LINE</u>				
C	100 mm Diameter medium duty pipe including excavation 500 mm average depth laid on murrum bed and surrounds and backfilling with selected material	20	LM		
D	Standard man hole size 600x450 mm ( Internal dimensions) including excavation, 150mm thick natural stone walling in cement mortar joints, 150 mm thick concrete bed and benching with 100 mm diameter channel mix (1:2:4) and 12 mm thick cement and sand rendering and heavy duty plastic cover with frame built-in walling	5	NO		
E	Allow for testing of waste drain system to satisfaction of County Works Officer	ITEM		SUM	
	TOTAL FOR EXTERNAL WORKS CARRIED TO MAIN SUMMARY				
	20				

NATIONAL GOVERNMENT CONSTITUENCIES  
DEVELOPMENT FUND BOARD

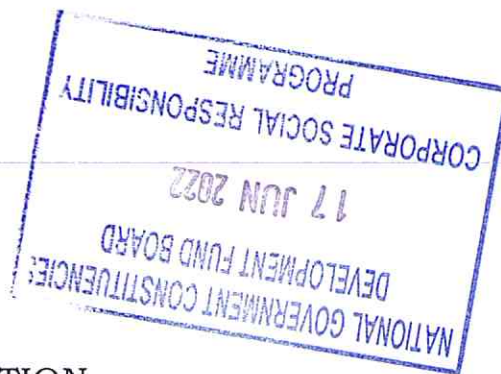
17 JUN 2022

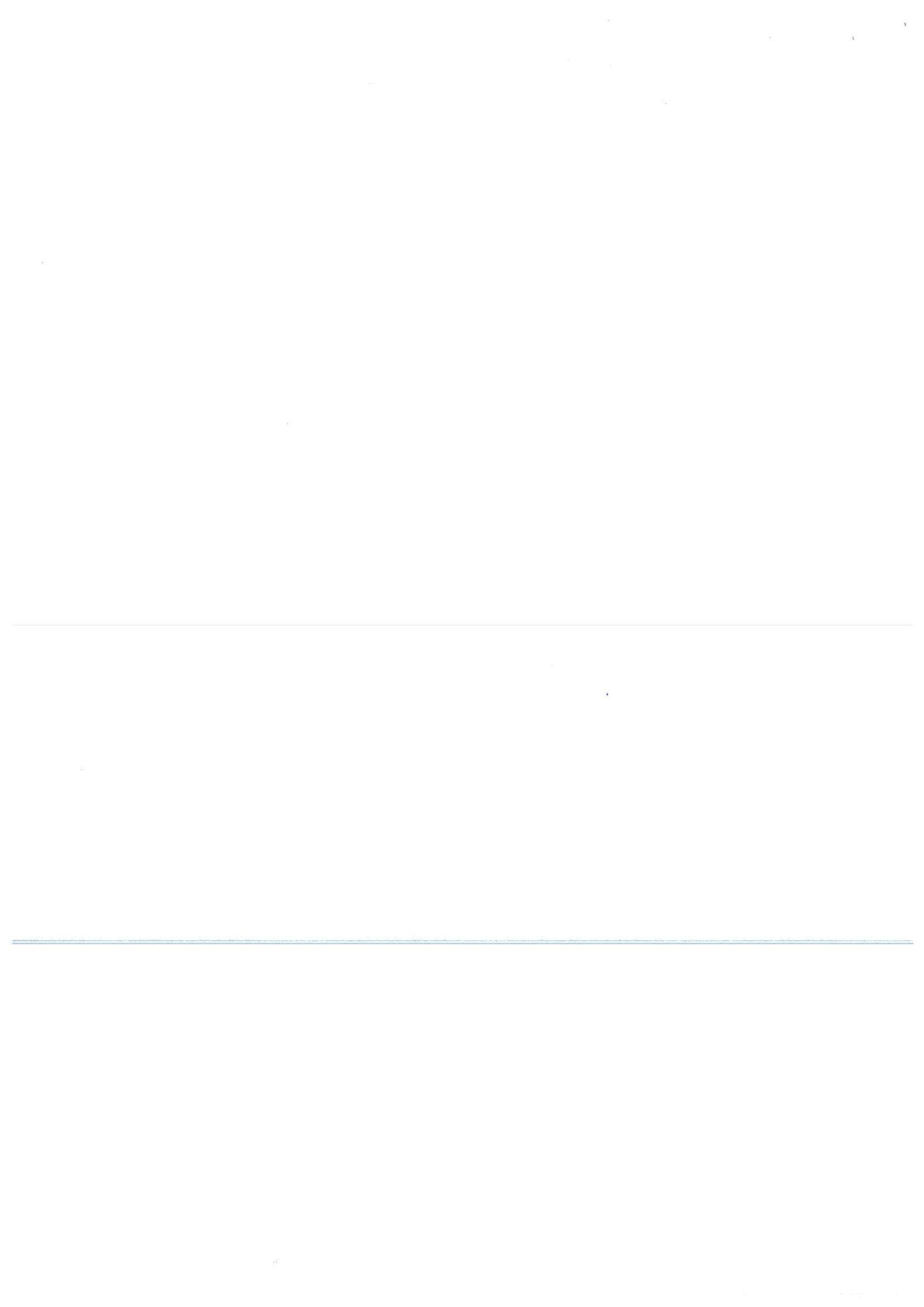
CORPORATE SOCIAL RESPONSIBILITY  
PROGRAMME

---

NATIONAL GOVERNMENT CONSTITUENCIES  
DEVELOPMENT FUND BOARD  
17 JUN 2022  
CORPORATE SOCIAL RESPONSIBILITY  
PROGRAMME

ITEM NO	DESCRIPTION	SHS
<b>PROPOSED CONSTRUCTION OF 4 DOOR TOILET BLOCK</b>		
<b><u>MAIN SUMMARY</u></b>		
A	SUBSTRUCTURE	
B	REINFORCED CONCRETE SUPERSTRUCTURE	
C	WALLING	
D	ROOFING	
E	DOORS	
F	WINDOWS	
G	FINISHES	
H	PLUMBING INSTALLATION	
I	EXTERNAL WORKS	
TOTAL COST OF 4 DOOR TOILET BLOCK CARRIED TO GRAND SUMMARY		
21		





**NOTES**

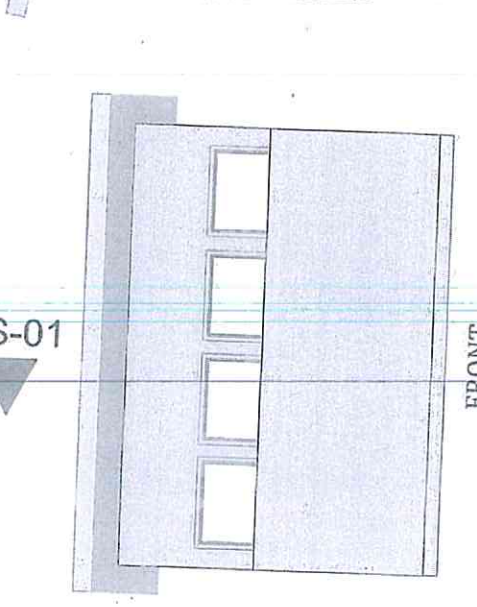
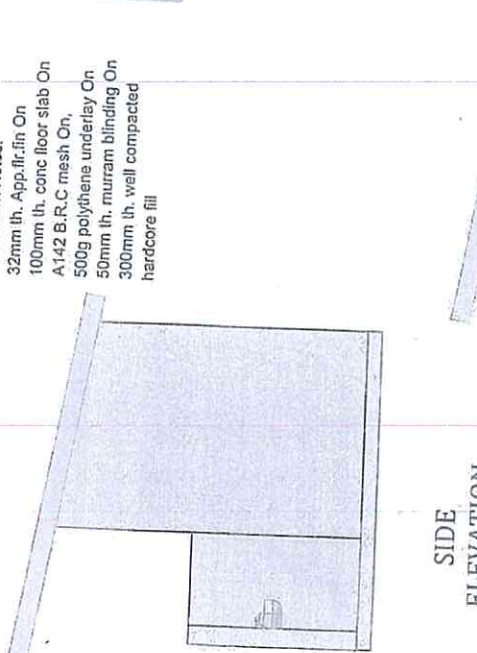
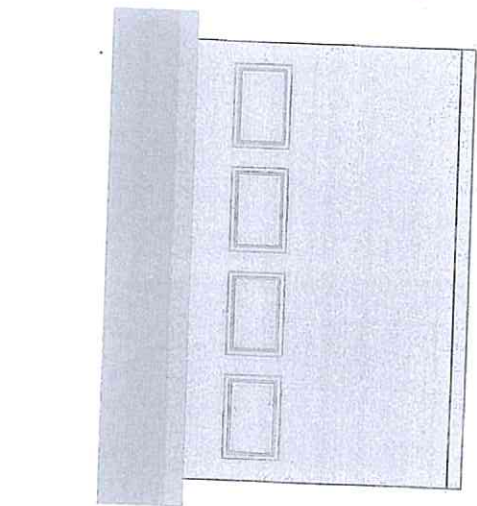
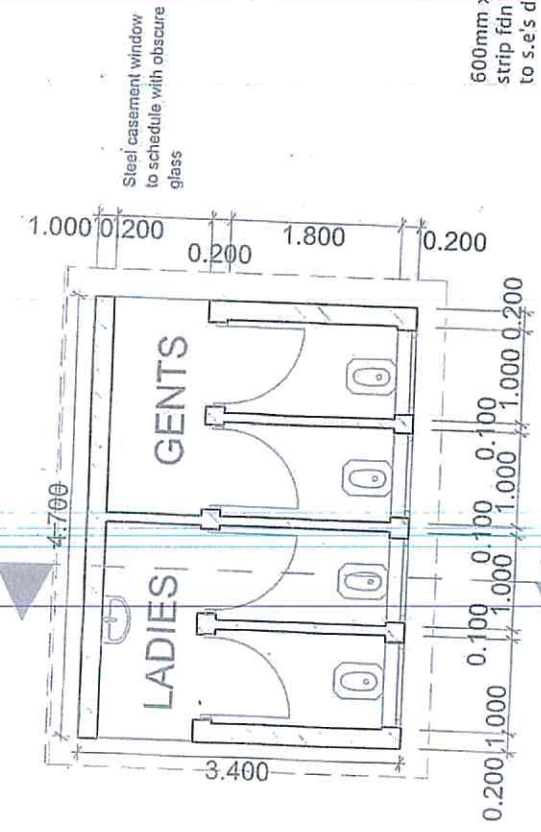
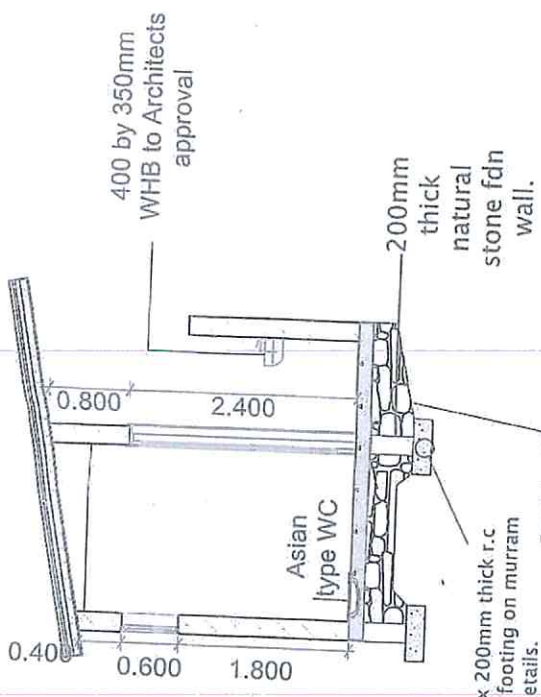
1. This drawing is copyright (c)
2. All dimensions are in mm and are not to be scaled
3. Contractor to confirm dimensions before commencing any works
4. Any discrepancies to be reported to the Structural Engineer's A
5. All works to be checked on site before any works commences
6. All works to be subject to inspection to the County Government
7. All works to be subject to inspection to the County Government
8. This drawing to be read in conjunction with the Architectural
9. and other specifications related to the drawing
10. Works equal to or less than 200mm thick to be reinforced with 10
11. mm thick concrete
12. A single layer of 10mm thick reinforcement is to be provided below
13. and Reinforced Concrete work
14. Depth of foundation to be determined on site
15. Drain pipes passing under tanks, downpipes are to be encased
16. in concrete
17. All Reinforced Concrete works to be done to Structural Engineer's
18. drawings. All tanks to MOH Standards
19. All road, storm water drainage and four water services to the
20. Engineer's drawings
21. Provide the following concrete cover to the rebar:
22. Slabs = 20 mm
23. Beams = 25 mm
24. Columns = 30 mm
25. Staircase = 20 mm
26. Foundations = 50 mm
27. Bases = 50 mm
28. (1:1.5:3) FOR COLUMN
29. (1:2.4) FOR BASES, ST
30. BEAMS & SLABS.
31. (1:3.0) FOR BUILDING
32. MAXIMUM AGGREGATE SIZE 25
33. CDS worst High Yield Steel to BS 4441 and 101 rolled to BS 4

Project: **PROPOSED CONSTRUCTION OF TWIN TOILET AT KHALANKAL PRIMARY SCHOOL-MASALANI**

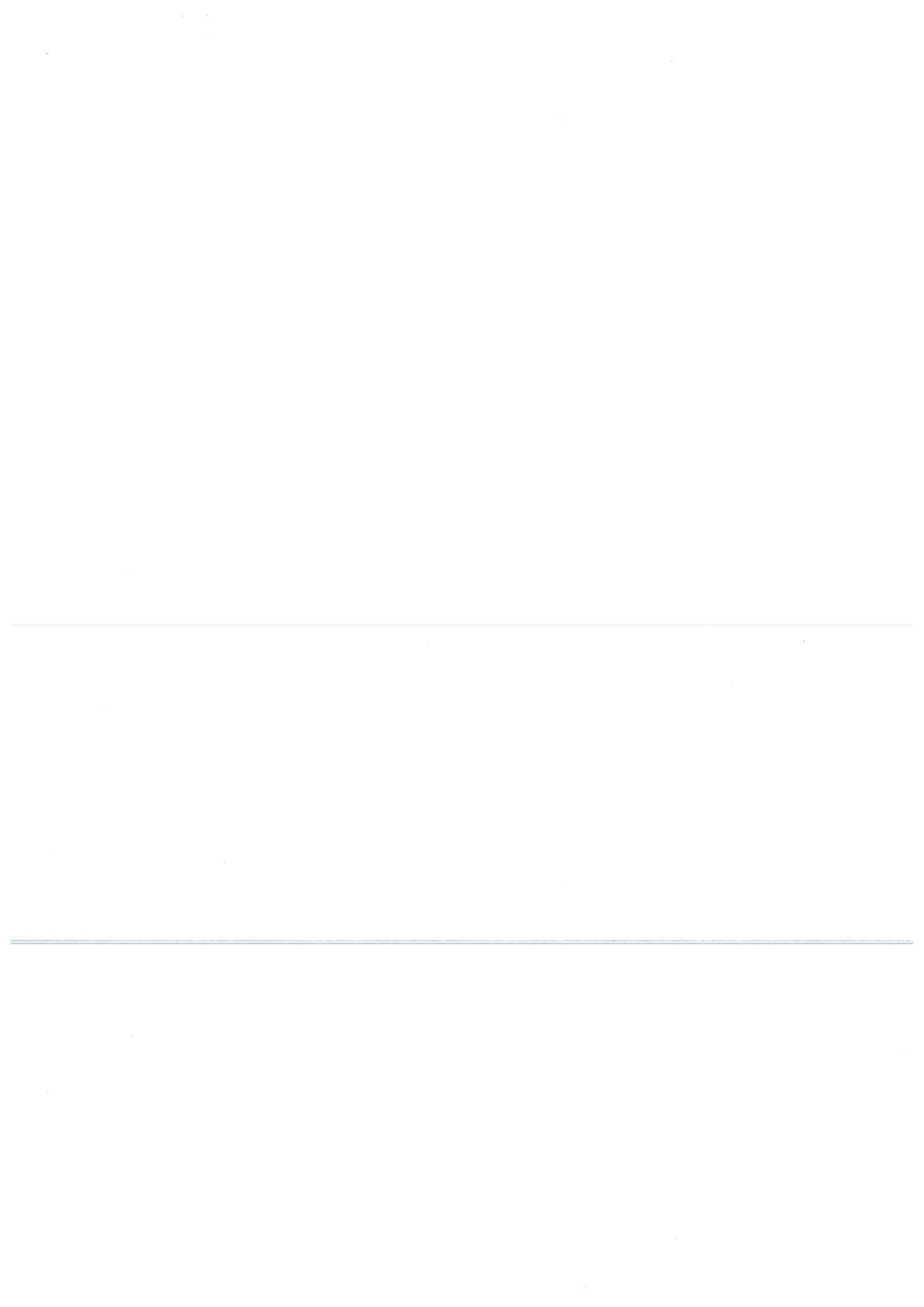
PLAN, ELEVATIONS AND SECTIONS

NGAF-IJARA CONSTITUENCY

County Government of Garissa  
 DEPARTMENT OF PUBLIC WORKS  
 NAME: P. O. Box 41 - 70100, GARISSA  
 Date: \_\_\_\_\_



NATIONAL GOVERNMENT CONSTITUENCIES  
 DEVELOPMENT FUND BOARD  
 17 JUN 2022  
 CORPORATE SOCIAL RESPONSIBILITY  
 PROGRAMME



ITEM NO	DESCRIPTION	SHS
	<u>PROPOSED CONSTRUCTION AND EQUIPPING</u> <u>OF 3NO.CLASSROOMS</u> <u>AND</u> <u>4 DOOR TOILET BLOCK</u>  <u>GRAND SUMMARY</u>	
A	PROPOSED CONSTRUCTION OF 3NO.CLASSROOMS	
B	4 DOOR TOILET BLOCK	
C	PRELIMINARIES	
	<div data-bbox="539 943 1007 1249" style="border: 1px solid blue; padding: 5px; margin: 10px auto; width: fit-content;">           NATIONAL GOVERNMENT CONSTITUENCIES            DEVELOPMENT FUND BOARD              17 JUN 2022              CORPORATE SOCIAL RESPONSIBILITY            PROGRAMME         </div>	
	SUB-TOTAL  ADD VAT 16%  TOTAL COST OF 3NO.CLASSROOMS AND 4 DOOR TOILET BLOCK CARRIED TO FORM OF TENDER	

