

PROPOSED CONSTRUCTION OF ADMINISTRATION BLOCK

AT

FOROLLE POLICE POST

IN

NORTH HERR CONSTITUENCY

MARSABIT COUNTY



ITEM NO	DESCRIPTION	QTY	UNIT	RATE	SHS
	<u>ENVIRONMENTAL CONSERVATION</u>				
A	The Contractor shall plant trees immediately the site is handed over as directed by County Works Officer and Head Teacher and water during contract period till well established	ITEM		SUM	20,000
	<u>SUBSTRUCTURE</u>				
	1.If site is sloping, flatten site before construction commences and where possible Building should be along contours and not across same.				
	2. Substructure Walling should on average be 300mm above flattened ground.				
	<u>ALL PROVISIONAL</u>				
A	Clear site of bushes, grass and debris and cart away and burn	162	SM		
B	Excavate oversite 150mm deep to remove vegetable soil and cart away and deposit as directed	162	SM		
C	Excavate for column pits commencing from stripped ground level and not exceeding 1.50 Metres	10	CM		
D	Ditto trench not exceeding 1.50 metres deep from stripped ground	72	CM		
E	Extra over for excavation in rock of any class	4	CM		
F	Cart away excavated material and deposit in council approved dump	34	CM		
G	Return, fill and ram selected material to back of foundations	30	CM		
H	Allow for planking and strutting to uphold sides of excavations	ITEM		SUM	
I	Allow for keeping excations free from general water including spring water by pumbing or otherwise	ITEM		SUM	
J	Hardcore fill in making up levels laid and compacted in layers of 150 mm thick and overall thickness 300 mm	152	SM		
	Carried to Collection				
	1				

**NATIONAL GOVERNMENT CONSTITUENCIES
 DEVELOPMENT FUND BOARD**

23 JUN 2022

**CORPORATE SOCIAL RESPONSIBILITY
 PROGRAMME**

ITEM NO	DESCRIPTION	QTY	UNIT	RATE	SHS
A	Treat surface of stripped ground with chloropyrif or antitermite treatment applied in accordance with the manufacturer' printed instructions	165	SM		
B	Murram blinding laid on hardcore(ms)	152	SM		
C	Gauge 500 damp proof membrane	165	SM		
	<u>Concrete Work</u>				
	<u>Plain Concrete Class mix (1:4:8) in:</u>				
D	50 mm Thick blinding under strip foundations	54	SM		
	<u>Vibrated Reinforced concrete mix (1:2:4) in:-</u>				
E	Strip foundations	11	CM		
F	100 mm Thick floor bed	165	SM		
G	100 Ditto ramp 1200 mm wide and 3000 mm long including 20mm thick cement and sand screed (1:3) with grooves in approved pattern	2	NO		
H	Concrete site step size 1200x500 mm ,200 mm step and 165 mm high	8	LM		
	Carried to Collection				
	2				

NATIONAL GOVERNMENT CONSTITUENCIES
DEVELOPMENT FUND BOARD
23 JUN 2022
CORPORATE SOCIAL RESPONSIBILITY
PROGRAMME

ITEM NO	DESCRIPTION	QTY	UNIT	RATE	SHS
A	50 mm Thick precast concrete paving slabs (1:2:4) with joints in cement mortar (1:4) pointed and laid on murrum and hardcore bed including excavating 150 mm deep	32	SM		
	<u>REINFORCEMENT</u>				
	<u>Supply and fix the following high tensile ribbed round steel bars to B.S. 4461 including binding wires, spacer blocks ,cutting and bending</u>				
B	10 mm Diameter bars	225	KG		
C	8mm Ditto	106	KG		
D	BRC Fabric REF. A142 weighing 2.20 KGS per square metres including side and end laps, stools and binding wire	165	SM		
	Carried to collection				
	3				

NATIONAL GOVERNMENT CONSTITUENCIES
 DEVELOPMENT FUND BOARD
 23 JUN 2022
 CORPORATE SOCIAL RESPONSIBILITY
 PROGRAMME

ITEM NO	DESCRIPTION	QTY	UNIT	RATE	SHS
	<u>COLLECTION</u>				
	From page 1				
"	" 2				
"	" 3				
"	" 4				
	TOTAL FOR SUBSTRUCTURE CARRIED TO MAIN SUMMARY				
	5				

NATIONAL GOVERNMENT CONSTITUENCIES
 DEVELOPMENT FUND BOARD
 23 JUN 2022
 CORPORATE SOCIAL RESPONSIBILITY
 PROGRAMME

ITEM NO	DESCRIPTION	QTY	UNIT	RATE	SHS
	<u>REINFORCED CONCRETE SUPERSTRUCTURE</u>				
	<u>Vibrated Reinforced Concrete mix class 25/20 with crushing strength of 25N/mm²</u>				
A	Ring Beams	4	CM		
B	150 mm Concrete slap (Armoury)	12	SM		
	<u>REINFORCEMENT</u>				
	<u>Supply and fix the following high tensile ribbed steel bars as before :</u>				
C	12 mm Diameter bars	233	KG		
D	10 mm Ditto	59	KG		
E	8 mm Ditto	116	KG		
	Carried to collection				
	6				

NATIONAL GOVERNMENT CONSTITUENCIES
DEVELOPMENT FUND BOARD
23 JUN 2022
CORPORATE SOCIAL RESPONSIBILITY
PROGRAMME

ITEM NO	DESCRIPTION	QTY	UNIT	RATE	SHS
	<u>Sawn formwork to:-</u>				
A	Sides and soffits of beams	53	SM		
B	Soffit of slap <u>MILD STEEL</u>	12	SM		
C	75 mm Diameter tubular 2800 mm high with 2NO. 100X100X3 top plate with 4NO.10mm diameter bolts 100 mm long and 100x100x3 mm base plate with 4 NO. anchor bolts 150 mm long and 12 mm diameter	5	NO		
D	Prepare and apply three coats gloss oil paint to large pipes	14	LM		
	<u>Second grade celcured cypress :</u>				
E	100X50 mm Wall plate	16	LM		
	Carried to collection				
	<u>COLLECTION</u>				
	From page 6				
	" Above				
	TOTAL FOR REINFORCED CONCRETE SUPERSTRUCTURE CARRIED TO MAIN SUMMARY				
	7				

NATIONAL GOVERNMENT CONSTITUENCIES
DEVELOPMENT FUND BOARD
23 JUN 2022
CORPORATE SOCIAL RESPONSIBILITY
PROGRAMME

ITEM NO	DESCRIPTION	QTY	UNIT	RATE	SHS
<u>WALLING</u>					
<u>EXTERNAL WALLING</u>					
<u>Natural stone machine cut , with crushing strength of 14.00 N/MM2 bedded in cement and sand (1:4) mortar joints reinforced with hoop as before:</u>					
A	150 mm Thick walls	116	SM		
B	150mm Ditto in gables	23	SM		
C	150x300 mm Piers	27	LM		
D	150 mm Wide damp proof course laid in cement and sand (1:4) bed	50	LM		
E	Extra over medium chisel dressed walling for neatly recessed horizontal joints	116	SM		
<u>INTERNAL WALLING</u>					
F	150 mm Thick machine cut stone in cement and sand mortar joints (1:4)	108	SM		
G	150X200 mm Precast concrete permanent vents with mosquito gauze wire build in walling	33	PR		
H	150 mm Wide damp proof as before described	43	LM		
<u>Sundry</u>					
I	Raking cutting on 150 mm thick walls	27	LM		
J	Eaves filling on 150mm thick walling and 300mm average height	31	LM		
TOTAL FOR WALLING CARRIED TO MAIN SUMMARY					
8					

**NATIONAL GOVERNMENT CONSTITUENCIES
 DEVELOPMENT FUND BOARD**

23 JUN 2022

**CORPORATE SOCIAL RESPONSIBILITY
 PROGRAMME**

ITEM NO	DESCRIPTION	QTY	UNIT	RATE	SHS
	ROOFING				
	<u>ROOF CONSTRUCTION</u>				
	<u>TIMBER TRUSSES</u>				
	<u>Fabricate, bolt and hoist the following 10NO.Trusses span 11.50 metres and hoistand fix 3.00 metre above ground:</u>				
	<u>Second grade celcured cypress:</u>				
A	150x50 mm Rafters	136	LM		
B	150x50 Ceiling joists/tie beams	115	LM		
C	100x50 Struts and ties	136	LM		
D	100X50 mm King post	23	LM		
	<u>Sundry</u>				
E	12 mm Diameter rawl bolts 200 mm long with washers	51	NO		
	<u>END OF TRUSSES</u>				
	<u>General Construction</u>				
F	100X50 mm Wall plate	31	LM		
I	75X50 mm Purlins	224	LM		
	<u>ROOF COVERING</u>				
J	Pre-painted gauge 28 galvanised corrugated roofing sheets with side and end laps including brass 'J' bolts with plastic caps to suppliers's specification	218	SM		
K	Ridge and hip cap in matching sheet	16	LM		
	<u>Wrot Cypress</u>				
L	200X25 mm Fascia and Barge board	59	LM		
	<u>Painting and Decorating</u>				
M	Prepare and apply one under coat and three finishing coats of gloss oil paint to general surfaces of wood work 200 to 300 mm girth	59	LM		
	Carried to Collection				
	9				

**NATIONAL GOVERNMENT CONSTITUENCIES
 DEVELOPMENT FUND BOARD**

23 JUN 2022

**CORPORATE SOCIAL RESPONSIBILITY
 PROGRAMME**

ITEM NO	DESCRIPTION	QTY	UNIT	RATE	SHS
	<u>Rainwater Goods</u>				
A	100 mm Diameter half round plastic eaves gutters supported with brackets at 1000 mm centres	32	LM		
B	Extra over for 600 mm long swanneck	4	NO		
C	Ditto stopped ends	4	NO		
D	Ditto outlets	4	NO		
E	Ditto bends	4	NO		
F	75 mm Diameter down pipe held with pipe clips to walling	12	LM		
G	Extra over for offset	4	NO		
	Carried to Collection				
	<u>COLLECTION</u>				
	From Page 9				
	" " 10				
	TOTAL FOR ROOF CARRIED TO MAIN SUMMARY				
	10				

**NATIONAL GOVERNMENT CONSTITUENCIES
 DEVELOPMENT FUND BOARD**
23 JUN 2022
**CORPORATE SOCIAL RESPONSIBILITY
 PROGRAMME**

ITEM NO	DESCRIPTION	QTY	UNIT	RATE	SHS
	<u>DOORS</u>				
	<u>Mild Steel</u>				
	<u>Fabricate, weld, supply and fix steel doors comprising gauge 16 cover plate in boxes, heavy gauge sections with weld joints ground smooth, apply red oxide primer before delivery including lugs built - in walling to Architect's approval:-</u>				
A	Steel door size 1200x2100 mm double door, leaf size 600x2100 mm, consisting 38x38 x 2 mm angle frame, 25x25mm hollow section tube internal framing including necessary ironmongery with 3NO. 25mm Heavy duty hinges, box profile 450x450mm	1	NO		
B	Ditto single leaf size 900x2100 mm ditto	1	NO		
	<u>INTERNAL DOORS</u>				
	<u>Wrot Cypress :</u>				
C	45mm Thick solid core flush door size 800x2050 mm including lipping edge with hardwood bead and facing both sides with interior quality plywood	5	NO		
	<u>Frames and mouldings</u>				
D	100X50 mm Frame with two labours plugged	27	LM		
E	40X20mm Architrave planted on	27	LM		
F	20mm Quadrant ditto	27	LM		
	<u>ARMOURY DOORS</u>				
	<u>MILD STEEL</u>				
F	900X2100 mm with grille to County Works Officer's specification and approval	1	NO		
	Carried to Collection				
	11				



ITEM NO	DESCRIPTION	QTY	UNIT	RATE	SHS
	<u>Ironmongery</u> Supply the following Ironmongery from Union Catalogue or other equal and approved including matching screws:				
A	Two lever mortice lock and furniture including matching screws as Union	5	NO		
B	100 mm Pressed steel butt hinges	7.5	PRS		
C	Rubber stops	8	NO		
	<u>Painting and Decorating</u>				
	<u>Externally</u>				
D	Prepare and apply three coats of gloss oil paint from Crown Berger or Dura Coat to general surfaces of meta	5	SM		
	<u>Internally</u>				
E	Prepare and apply three coats as before	10	SM		
F	Ditto general surfaces of wood work	19	SM		
G	Ditto 200 mm to 300 mm girth	27	LM		
	Carried to Collection				
	<u>COLLECTION</u>				
	From Page 11				
	" " 12				
	TOTAL FOR DOORS CARRIED TO MAIN SUMMARY				
	12				

NATIONAL GOVERNMENT CONSTITUENCIES
 DEVELOPMENT FUND BOARD
 23 JUN 2022
 CORPORATE SOCIAL RESPONSIBILITY
 PROGRAMME

ITEM NO	DESCRIPTION	QTY	UNIT	RATE	SHS
	<u>WINDOWS</u>				
	<u>Mild Steel</u>				
	<u>Fabricate ,Supply and fix including ground smooth weld joints with ' I' sections and 25x25 mm ' Z' sections prepare and apply red oxide primer before delivery including brass window stays and fasteners to Architect's approval and 12 mm square solid steel burglar proofing in pattern approved by Architect:</u>				
A	Composite window size 1800x1500 mm consisting of 2NO. opening lights size 600x1500mm , 1NO.fixed light and ventlight	5	NO		
B	Ditto 900x900 mm ditto	1	NO		
	<u>Glazing</u>				
C	4mm Thick clear glass in panes 0.10 to 0.50 square metres and glazing metal with linseed oil putty	14	SM		
D	5mm Ditto but obscure ditto	0	SM		
	<u>Precast Concrete</u>				
E	265X75 mm Window cill in concrete (1:2:4) including moulds, throating, top weathered and hoist and fix in position	10	LM		
F	Burnt clay brick window cill size 220x10 mm thick bedded in cement and sand mortar (1:3) weathred and throated and fair finish to exposed surfaces including pointing joints with red cement	10	LM		
	Carried to Collection				
	13				



ITEM NO	DESCRIPTION	QTY	UNIT	RATE	SHS
	<u>Painting and Decorating</u>				
	<u>Internally</u>				
A	Prepare and apply one under coat and three coats of gloss oil paint from Crown Berger or Dura Coat to general surfaces of metal	14	SM		
	<u>Externally</u>				
B	Ditto Surfaces of metal	14	SM		
	<u>PELMET BOXES</u>				
	<u>Wrot Cypress:</u>				
C	150X25 mm Front with two labours	10	LM		
D	100X25 mm Top	10	LM		
E	50X25mm Bearer plugged	10	LM		
F	150X100 mm Closed ends	12	NO		
G	Brass curtain track with rollers, hooks and stopped ends	10	LM		
	Carried to Collection				
	<u>COLLECTION</u>				
	From Page 13				
	" " 14				
	TOTAL FOR WINDOWS CARRIED TO MAIN SUMMARY				
	14				

NATIONAL GOVERNMENT CONSTITUENCIES
 DEVELOPMENT FUND BOARD
 23 JUN 2022
 CORPORATE SOCIAL RESPONSIBILITY
 PROGRAMME

ITEM NO	DESCRIPTION	QTY	UNIT	RATE	SHS
<u>FINISHES</u>					
<u>EXTERNAL FINISHES</u>					
A	12 mm Thick cement and sand (1:4) rendering to concrete surfaces woodfloat finished	16	SM		
B	12 mm Ditto to walls and reveals	17	SM		
C	12 mm Ditto to gables	23	SM		
<u>Painting and Decorating</u>					
D	Prepare and apply three coats plastic emulsion paint from Crown Berger or Dura Coat to rendered surfaces	56	SM		
<u>Internal Wall Finishes</u>					
E	12 mm Thick plaster plus cement and sand (1:4) steel float finished	363	SM		
<u>Painting and Decorating</u>					
F	Prepare and apply three coats plastic emulsion vinyl silk cream paint from Crown Berger or Dura Coat to plastered surfaces	363	SM		
<u>CERAMIC WALL TILES</u>					
G	8mm Thick ceramic wall tiles size 300x200mm fixed with cement grout and joints pointed with white cement	0	SM		
Carried to Collection					
15					



ITEM NO	DESCRIPTION	QTY	UNIT	RATE	SHS
	<u>Floor Finishes</u>				
A	20 mm Thick cement and sand (1:3) floor screed wood float finished to receive tiles (M.S)	142	SM		
	<u>CERAMIC TILES</u>				
B	8 mm Thick ceramic floor tiles size 300x300 mm laid with cement grout and joints pointed with white cement	142	SM		
C	8 mm Ditto and 100 mm high skirting	137	LM		
	<u>Ceiling</u>				
D	12 mm Thick chip board ceiling fixed in symmetrical pattern	142	SM		
E	Extra over ceiling for 600x600 mm trap door with 75x25 mm cornice all round and framing	1	NO		
F	75X25 mm Cornice with moulding	149	LM		
	<u>Second grade celcured cypress</u>				
G	50X50 mm Branderings	432	LM		
H	50X50 mm Branderings but plugged	149	LM		
	<u>Painting and Decorating</u>				
I	Prepare and apply three coats of plastic emulsion paint to general surfaces of soft board (Brilliant white)	142	SM		
J	General surfaces to 100 mm girth	149	LM		
	Carried to Collection				

16



ITEM NO	DESCRIPTION	QTY	UNIT	RATE	SHS
	<u>PLUMBING INSTALLATION</u>				
	<u>ALL PROVISIONAL</u> Supply and fix the following Sanittary Fittings from Shanks Catalogue or other equal and approved including joining to waste drains and cold water supply:				
A	Vitreous china WC Suite complete with 11 litre capacity cistern, Plastic WC seat cover	0	NO		
B	Vitreous china Wash hand basin size 600x450mm fixed to walling with 20 mm diameter mild steel tubing 500 mm long	0	NO		
C	6mm Thick mirror size 600x450mm with back copper coated with bevelled edges and fixed with 4NO.dome shaped brass screws	0	NO		
D	20mm Diameter chrome towel rail 1200 mm long with 2NO. Brackets fixed to walling	0	NO		
	<u>COLD WATER SUPPLY</u>				
E	20mm Diameter PPR pipe	0	LM		
F	Extra over for equal tee	0	NO		
G	20mm Diameter bends	0	NO		
H	38mm Diameter morphine bottle trap	0	NO		
	<u>EQUIPMENT</u>				
I	1000 Litres capacity plastic water tank in ceiling with cover and brass equilibrium ball valve and 2NO.,back nut and hoist and fix in position	0	NO		
	<u>WASTE DRAINS</u>				
J	38mm Diameter PVC Waste pipe	0	LM		
K	100mm Diameter medium duty PVC foul drain pipe	0	LM		
L	Extra over for 38 mm diameter bend	0	NO		
M	Ditto 100 mm diameter bend	0	NO		
	Carried to Collection				
	18				

ITEM NO	DESCRIPTION	QTY	UNIT	RATE	SHS
A	100 mm Diameter WC connector	0	NO		
	<u>EXTERNAL WORKS</u>				
B	100 mm Diameter PVC pipe in foul drainage including excavation average 500 mm deep and surround with murrum	0	LM		
C	Heavy duty plastic Bio- Digester tank including excavation and filling back, cover and fill tank with approved bacterial (County Works Officer)	0	NO		
D	100 mm Diameter medium duty perforated pipe in Soak pit 10.00 Metre long including excavation to 1.50 Metres deep and 1000 mm wide and fill hardcore and top with murrum	0	NO		
E	Manhole size 600x450mm internal dimensions constructed with 150 mm natural stone in cement and sand mortar (1:4) and 150 mm thick concrete bed and benching with channel mix (1:2:4) and medium duty plastic cover with frame built-in walling and 20 mm thick cement and sand screed (1;3) and 12 mm thick plastering internally average depth 500 mm	0	NO		
F	Allow for testing of the whole of Plumbing Installation to the satisfaction of County Works Officer	ITEM		SUM	
	Carried to Collection				
	<u>COLLECTION</u>				
	From Page 18				
	" " 19				
	TOTAL FOR PLUMBING INSTALLATION CARRIED TO SUMMARY				
	19				

ITEM NO	DESCRIPTION	QTY	UNIT	RATE	SHS
<u>WATER STORAGE TANK</u>					
A	Excavate over site as before	3	SM		
B	Excavate foundation trench ditto	2	CM		
C	150 mm Thick concrete block walling as before	3	SM		
D	Mass concrete (1:3:6) in foundations	1	CM		
E	450 mm Thick hardcore as before	3	SM		
F	50 mm Thick murrum as before	3	SM		
G	100 mm Thick concrete (1:3:6) in slap	3	SM		
H	20 mm Thick cement and sand screed (1:3) as before	4	SM		
I	BRC REF A142 Fbric mesh as before	3	SM		
J	Supply and install cold water storage plastic water 10000 Litre capacity from Kentank or other equal and approved, Heavy duty (3 Ply)	1	NO		
K	12 mm Diameter pegler tap	1	NO		
L	19 mm Ditto union	1	NO		
M	32 mm Diameter overflow pipe 400 mm long	1	NO		
TOTAL FOR WATER TANK CARRIED TO MAIN SUMMARY					
20					

NATIONAL GOVERNMENT CONSTITUENCIES
 DEVELOPMENT FUND BOARD

 23 JUN 2022

 CORPORATE SOCIAL RESPONSIBILITY
 PROGRAMME

ITEM NO	DESCRIPTION	QTY	UNIT	RATE	SHS
	ELECTRICAL INSTALLATION				
	ELECTRICAL WORKS TO BE EXECUTED BY SPECIALIST REGISTERED BY KPL				
	<u>Supply , install , test and commission the following:</u>				
A	Lighting points wired in 3x1.5mm ² SC PVC CU cables drawn in 20mm dia HG PVC conduits with all necessary accessories excluding switches and fittings for one way switching	29	NO		
B	10A moulded ivory switch plate as crabtree or approved equivalent as follows: i. Two way one gang	3	NO		
	ii. Three way one gang	1	NO		
C	Lighting fittings complete with fixing accessories and lamps as follows: i. 1200mm lx 36w florescent batten fitting or slim cross section with clip on cover plate and adjustable end cap system as Thorn Popular Pack batten or approved equivalent	21	NO		
D	ii) Bulkhead fitting with aluminium body on Thorn or approved equivalent with Energy saving bulb	8	NO		
E	Socket outlets Power outlets i. Comprising of wiring in 3x2.5mm ² PVC SC CU in concealed HG conduits	6	NO		
	ii. 13A 2gang switched moulded socket outlet as crabtree or approved equivalent	3	NO		
	Consumer Units and Distribution Boards				
F	4-Way SP/N consumer unit flush mounted on wall complete with a 10A SP/N integral isolator as crabtree or approved equivalent	1	NO		
G	Single Pole miniature circuit breaker as follows: i. 5ASP	1	NO		
	ii. 30asp	2	NO		
	iii. Blanking covers	1	NO		
	Carried to Collection	21			



ITEM NO	DESCRIPTION	QTY	UNIT	RATE	SHS
A	Sub-mains Cables 3x6.0mm ² SCPVC CU cables drawn in HG conduit	10	LM		
B	Standard cable looping box complete with single cut out fuse neutral link	1	NO		
C	Electrical earthing comprising of 6.0mm ² SC PVC CU cable drawn in HG conduits 1500mm times 15mm copper electrodes c/w clamps pre-cast concrete inspection pit with cover	ITEM		SUM	
D	Testing and commissioning	ITEM		SUM	
E	Allow for supply and fixing Copper Lighting arrestors, w	1	NO		
<u>SOLAR INSTALLATION WORKS</u>					
F	Pv module :190 w 12vdc multicrystallic solar modules	8	NO		
G	Pv module :160w 12vdc multicrystallic solar modules	0	NO		
H	Battery :Chloride Exide 200 AH 12 hrs discharge 12V Flooded type battery or approved equivalent	4	NO		
I	12Vdc 1000W pure sinewave inverter as Victron Energy or Approved equivalent	1	NO		
J	60A digital charge controller	1	NO		
K	10.0 mm 2 x2 Core pvc copper cable	15	LM		
L	Cable lugs	4	NO		
M	Battery cables	10	LM		
N	Single cutout	2	NO		
	Carried to Collection				
	22				

ITEM	DESCRIPTION	QTY	UNIT	RATE	SHS
------	-------------	-----	------	------	-----

NATIONAL GOVERNMENT CONSTITUENCIES
 DEVELOPMENT FUND BOARD
 23 JUN 2022
 CORPORATE SOCIAL RESPONSIBILITY
 PROGRAMME

NO					
	<p><u>COLLECTION</u></p> <p>From Page 21</p> <p>" " 22</p>				
	<p>TOTAL FOR ELECTRICAL INSTALLATION CARRIED TO SUMMARY</p> <p>23</p>				

NATIONAL GOVERNMENT CONSTITUENCIES
DEVELOPMENT FUND BOARD

23 JUN 2022

CORPORATE SOCIAL RESPONSIBILITY
PROGRAMME

ITEM NO	DESCRIPTION	QTY	UNIT	RATE	SHS
	PRIME COST AND PROVISIONAL SUMS <u>EXPENDITURE FOR ITEMS HERE BELOW SHALL BE APPROVED BY NG-CDF BOARD</u> <u>The following sums shall be expended upon Architect's instructions and may be omitted in whole:</u>				
A	Allow for a Provisional Sum of Kenya Shillings One Hundred Thousand (Kshs.100,000/) for Contingency	ITEM		SUM	100,000
B	Allow for a Prime Cost Sum of Kenya Shillings Fifty Thousand (Kshs.50,000/) for Supply and Delivery of 9KG and 2NO. Water base and 9 Litre X2NO. Carbon dioxide Fire extinguishers mounted on walling to approval	ITEM		SUM	50,000
C	Allow for Branding of Project in accordance with NG-CDF Board Specifications	ITEM		SUM	15,000
	<u>FURNITURE</u>				
D	Allow for a Provisional Sum of Kenya Shillings (Kshs 286,000.00) for Fabrication and Supply of 1NO. Executive Office Desk , 6NO. Office Desk, 1NO. Executive Chair, 20NO. Office Chairs to be supplied by an approved Supplier with specifications from County Works Officer and OCS to approve	ITEM		SUM	286,000
E	Allow for Transport to site	ITEM		10%	28,600
	TOTAL FOR PRIME COST AND PROVISIONAL SUMS CARRIED TO MAIN SUMMARY				

24

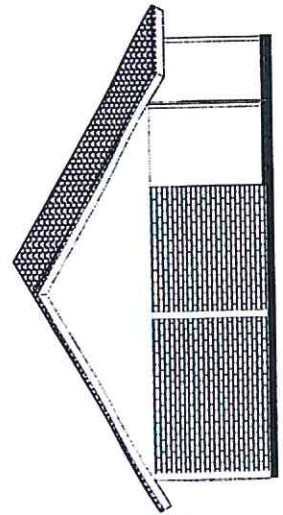
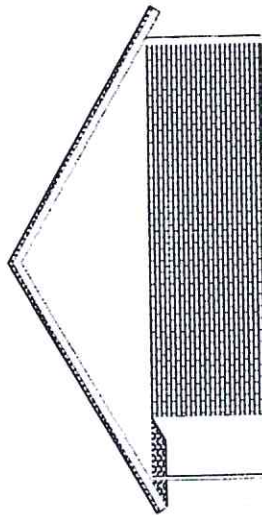
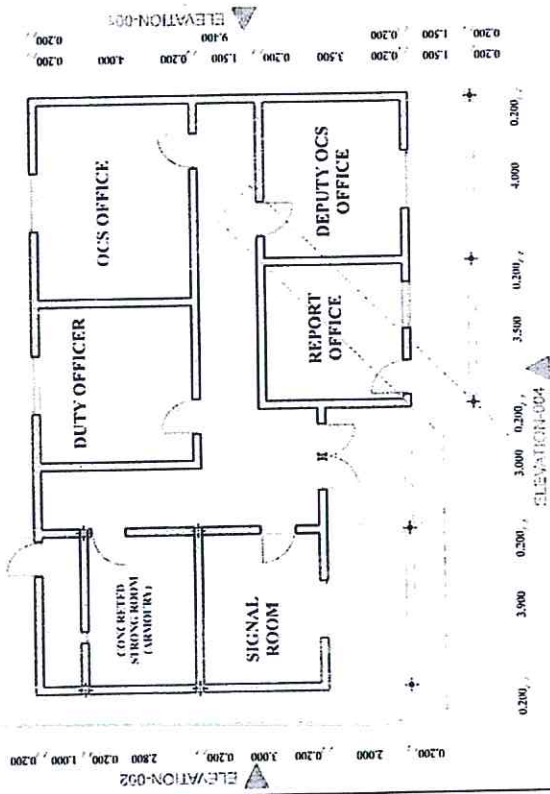
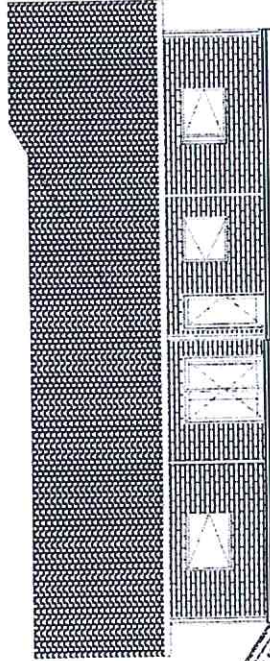
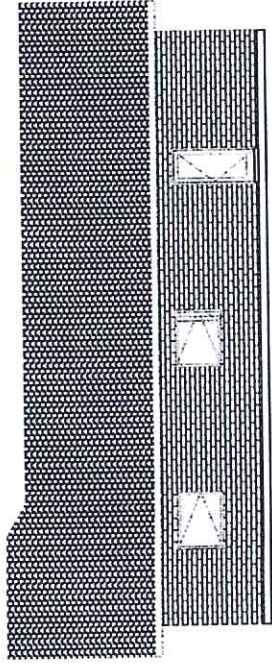


ITEM NO	DESCRIPTION	SHS
<u>PROPOSED CONSTRUCTION OF ADMINISTRATION BLOCK</u>		
<u>MAIN SUMMARY</u>		
A	SUBSTRUCTURE	
B	REINFORCED CONCRETE SUPERSTRUCTURE	
C	WALLING	
D	ROOFING	
E	DOORS	
F	WINDOWS	
G	FINISHES	
H	WATER TANK	
I	ELECTRICAL INSTALLATION	
J	PRIME COST AND PROVISIONAL SUMS	
K	PRELIMINARIES	
SUB-TOTAL		
ADD VAT 16%		
TOTAL COST OF ADMINISTRATION BLOCK CARRIED TO FORM OF TENDER		
25		

NATIONAL GOVERNMENT CONSTITUENCIES
 DEVELOPMENT FUND BOARD

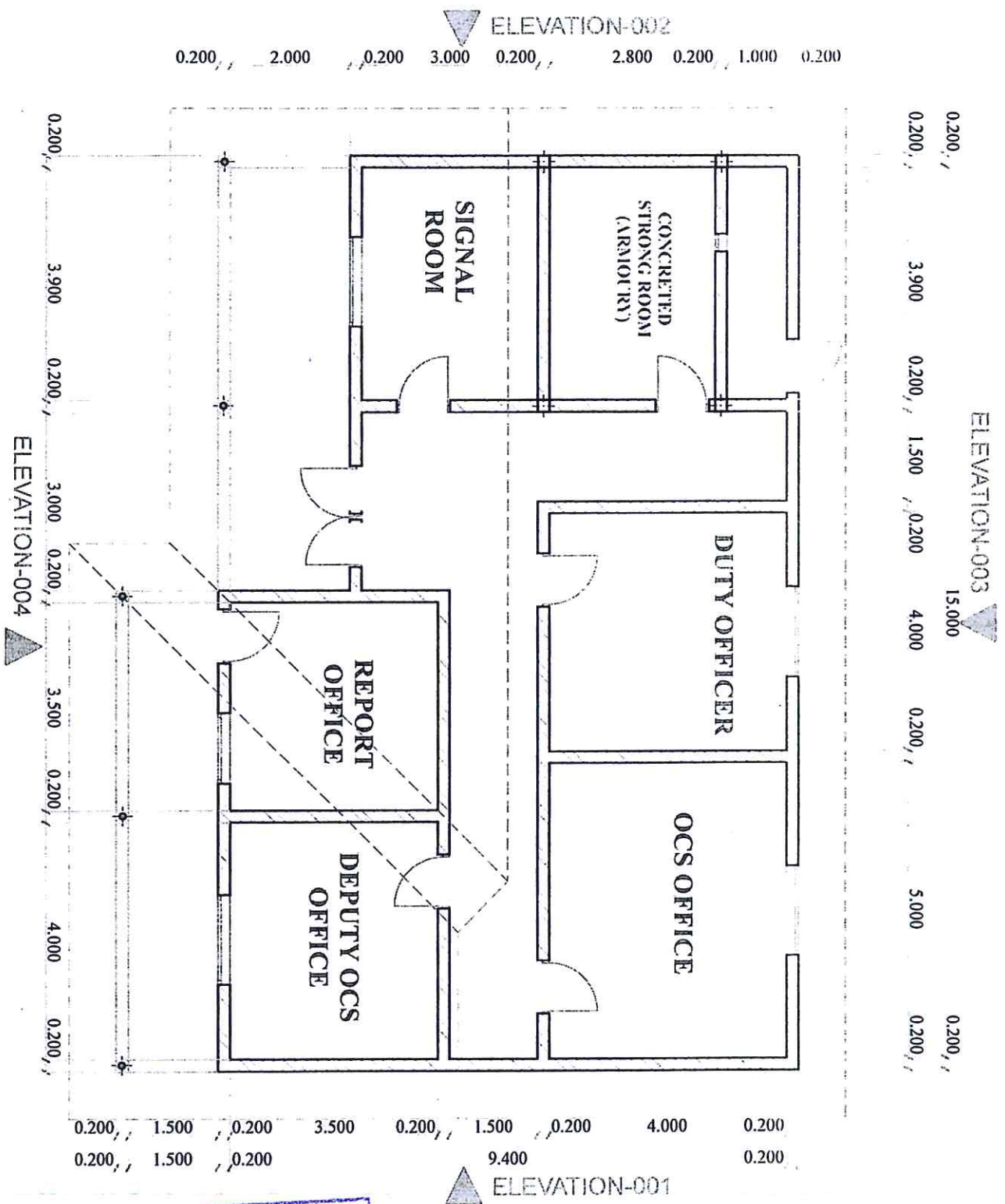
 23 JUN 2022

 CORPORATE SOCIAL RESPONSIBILITY
 PROGRAMME



PROJECT NAME	FOROLE POLICE ADMINISTRATION BLOCK
TITLE	FLOOR PLAN AND ELEVATIONS
DEPARTMENT OF PUBLIC WORKS	
DRAWN BY: B. M. ARUDO	SCALE: As shown

NATIONAL GOVERNMENT CONSTITUENCIES
 DEVELOPMENT FUND BOARD
 24 JUN 2021
 CORPORATE SOCIAL RESPONSIBILITY
 PROGRAMME



NATIONAL GOVERNMENT CONSTITUENCIES
 DEVELOPMENT FUND BOARD
 24 JUN 2021
 CORPORATE SOCIAL RESPONSIBILITY
 PROGRAMME

