

**PROPOSED CONSTRUCTION OF 3NO.CLASSROOMS**

**AT**

**NYANSANCHA PRIMARY SCHOOL**

**IN**

**NYARIBARI CHACHE CONSTITUENCY**

**KISII COUNTY**

**WITH FIRST FLOOR CONCRETE SLAP**

**NATIONAL GOVERNMENT CONSTITUENCIES  
DEVELOPMENT FUND BOARD  
23 JUN 2022  
CORPORATE SOCIAL RESPONSIBILITY  
PROGRAMME**

ITEM NO	DESCRIPTION	QTY	UNIT	RATE	SHS
	<b><u>ENVIRONMENTAL CONSERVATION</u></b>				
A	The Contractor shall plant trees immediately the site is handed over as directed by County Works Officer and Head Teacher and water during contract period till well established	ITEM		SUM	20,000
	<b><u>SUBSTRUCTURE</u></b> <b><u>Construct Concrete Ramp only</u></b>				
	1.If site is sloping, flatten site before construction commences and where possible Building should be along contours and not across same.				
	2. Substructure Walling should on average be 300mm above flattened ground.				
	<b><u>ALL PROVISIONAL</u></b>				
A	Clear site of bushes, grass and debris and cart away and burn	296	SM		
B	Excavate oversite 150mm deep to remove vegetable soil and cart away and deposit as directed	96	SM		
C	Excavate to reduce levels commencing from stripped ground level	20	CM		
D	Excavate for trench not exceeding 1.50 metres deep from stripped ground	73	CM		
E	Ditto pits for column bases 1.50 metres ditto	93	CM		
F	Extra over for excavation in rock of any class	8	CM		
G	Cart away excavated material and deposit in council approved dump	105	CM		
H	Return, fill and ram selected material to back of foundations	119	CM		
I	Allow for planking and strutting to uphold sides of excavations	ITEM		SUM	
J	Allow for keeping excations free from general water including spring water by pumbing or otherwise	ITEM		SUM	
K	Hardcore fill in making up levels laid and compacted in layers of 150 mm thick and overall thickness 300 mm	264	SM		
	<b>Carried to Collection</b>				
	1				



ITEM NO	DESCRIPTION	QTY	UNIT	RATE	SHS
A	Treat surface of stripped ground with chloropyrif or antitermite treatment applied in accordance with the manufacturer' printed instructions	285	SM		
B	Murram blinding laid on hardcore( ms)	264	SM		
C	Gauge 500 damp proof membrane	285	SM		
	<u>Concrete Work</u>				
	<u>Plain Concrete Class mix (1:4:8) in:</u>				
D	50 mm Thick blinding under column bases and strip foundations	170	SM		
	<u>Vibrated Reinforced concrete class 25/20 in:-</u>				
E	Strip foundations	11	CM		
F	Column bases	17	CM		
G	Columns	3	CM		
H	100 mm Thick floor bed	285	SM		
I	100 Ditto ramp 1200 mm wide and 3000 mm long including 20mm thick cement and sand screed (1:3) with grooves in approved pattern	1	NO		
J	Concrete site step size 1200x500 mm ,200 mm step and 165 mm high	8	LM		
	Carried to Collection				
	2				



ITEM NO	DESCRIPTION	QTY	UNIT	RATE	SHS
A	50 mm Thick precast concrete paving slabs (1:2:4) with joints in cement mortar (1:4) pointed and laid on murrum and hardcore bed including excavating 150 mm deep	31	SM		
	<u>REINFORCEMENT</u>				
	<u>Supply and fix the following high tensile ribbed round steel bars to B.S. 4461 including binding wires, spacer blocks ,cutting and bending</u>				
B	16 mm Diameter bars	485	KG		
C	12mm Ditto	713	KG		
D	10 mm Ditto	523	KG		
E	8mm Ditto	354	KG		
F	BRC Fabric REF. A142 weighing 2.20 KGS per square metres including side and end laps, stools and binding wire	285	SM		
	Carried to collection				
		3			

NATIONAL GOVERNMENT CONSTITUENCIES  
DEVELOPMENT FUND BOARD  
23 JUN 2022  
CORPORATE SOCIAL RESPONSIBILITY  
PROGRAMME

ITEM NO	DESCRIPTION	QTY	UNIT	RATE	SHS
	<b><u>Sawn Formwork to:-</u></b>				
A	Sides of foundations	84	SM		
B	Sides of column bases	70	SM		
C	Vertical sides of columns	46	SM		
D	Edge of bed 75- 150 mm high	95	LM		
E	Edge of riser 150 - 225 mm high	8	LM		
	<b><u>WALLING</u></b>				
F	200 mm Thick natural stone walling to 14 N/mm <sup>2</sup> crushing strength joint in cement and sand mortar (1:4) and reinforced with 25x20 mm hoop iron at alternate	130	SM		
	<b><u>PLINTHS</u></b>				
G	12 mm Thick cement and sand (1:4) render to plinth woodfloat finished	22	SM		
H	Prepare and apply three coats bitumastic paint to rendered plinth	22	SM		
	Carried to collection				

4



ITEM NO	DESCRIPTION	QTY	UNIT	RATE	SHS
	<u>COLLECTION</u>				
	From page 1				
	" " 2				
	" " 3				
	" " 4				
	TOTAL FOR SUBSTRUCTURE CARRIED TO MAIN SUMMARY				
	5				

NATIONAL GOVERNMENT CONSTITUENCIES  
 DEVELOPMENT FUND BOARD  
  
 23 JUN 2022  
  
 CORPORATE SOCIAL RESPONSIBILITY  
 PROGRAMME

ITEM NO	DESCRIPTION	QTY	UNIT	RATE	SHS
	<b><u>REINFORCED CONCRETE SUPERSTRUCTURE</u></b>				
	<u>Vibrated Reinforced Concrete mix class 25/20 with crushing strength of 25N/mm<sup>2</sup></u>				
A	Beams	17	CM		
B	Columns	7	CM		
C	Ramp	6	CM		
D	150mm Thick suspended floor slab	285	SM		
E	150mm Ditto but landing	10	SM		
	<b><u>REINFORCEMENT</u></b>				
	<u>Supply and fix the following high tensile ribbed steel bars as before :</u>				
F	16 mm Diameter bars	936	KG		
G	12 mm Ditto	998	KG		
H	10mm Ditto	1029	KG		
I	8mm Ditto	1509	KG		
	Carried to collection				
	6				



ITEM NO	DESCRIPTION	QTY	UNIT	RATE	SHS
	<u>Sawn formwork to:-</u>				
A	Sides and soffits of beams	208	SM		
B	Vertical sides of columns	107	SM		
C	Soffits of suspended slap	284	SM		
D	Ditto landing	10	SM		
E	Ditto soffit of slaping ramp	108	SM		
F	Edges of ramp 225 mm to 300 mm high	50	LM		
G	Edges of suspended slap 150 mm to 225 mm high	77	LM		
	Carried to collection				
	<u>COLLECTION</u>				
	From page 6				
	" Above				
	TOTAL FOR REINFORCED CONCRETE SUPERSTRUCTURE CARRIED TO MAIN SUMMARY				
	7				

NATIONAL GOVERNMENT CONSTITUENCIES  
DEVELOPMENT FUND BOARD  
23 JUN 2022  
CORPORATE SOCIAL RESPONSIBILITY  
PROGRAMME

ITEM NO	DESCRIPTION	QTY	UNIT	RATE	SHS
<b><u>WALLING</u></b>					
<u>EXTERNAL WALLING</u>					
Natural stone machine cut , with crushing strength of 14.00 N/MM2 bedded in cement and sand (1:4) mortar joints reinforced with hoop as before:					
A	200 mm Thick walls	157	SM		
B	200 mm Wide damp proof course laid in cement and sand (1:4) bed	81	LM		
C	Extra over medium chisel dressed walling for neatly recessed horizontal joints	157	SM		
<u>INTERNAL WALLING</u>					
D	200 mm Thick machine cut stone in cement and sand mortar joints (1:4)	31	SM		
E	150X200 mm Precast concrete permanent vents with mosquito gauze wire build in walling	16	PR		
F	200 mm Wide damp proof as before described	13	LM		
TOTAL FOR WALLING CARRIED TO MAIN SUMMARY					
8					

NATIONAL GOVERNMENT CONSTITUENCIES  
 DEVELOPMENT FUND BOARD  
 23 JUN 2022  
 CORPORATE SOCIAL RESPONSIBILITY  
 PROGRAMME

ITEM NO	DESCRIPTION	QTY	UNIT	RATE	SHS
	<b>DOORS</b>				
	<u>Mild Steel</u>				
	<u>Fabricate, weld, supply and fix steel doors comprising gauge 16 cover plate in boxes, heavy gauge sections with weld joints ground smooth, apply red oxide primer before delivery including lugs built - in walling to Architect's approval:-</u>				
A	Steel door size 1200x2100 mm double door, leaf size 600x2100 mm, consisting 38x38 x 2 mm angle frame, 25x25mm hollow section tube internal framing including necessary ironmongery with 3NO. 25mm Heavy duty hinges, box profile 450x450mm	3	NO		
	<u>Glazing</u>				
B	4mm Thick clear sheet glass in panes 0.10 to 0.50 Square metres and glazing metal with linseed putty	3	SM		
	Carried to Collection				
	9				

NATIONAL GOVERNMENT CONSTITUENCIES  
 DEVELOPMENT FUND BOARD  
 23 JUN 2022  
 CORPORATE SOCIAL RESPONSIBILITY  
 PROGRAMME

ITEM NO	DESCRIPTION	QTY	UNIT	RATE	SHS
	<u>Ironmongery</u>				
A	Two lever mortice lock and furniture including matching screws as Union	0	NO		
B	Heavy duty bush hinges	6	NO		
C	Rubber stops	6	NO		
	<u>Painting and Decorating</u>				
	<u>Externally</u>				
D	Prepare and apply three coats of gloss oil paint from Crown Berger or Dura Coat to general surfaces of meta	9	SM		
	<u>Internally</u>				
E	Prepare and apply three coats as before	9	SM		
	Carried to Collection				
	<u>COLLECTION</u>				
	From Page 9				
	" " 10				
	TOTAL FOR DOORS CARRIED TO MAIN SUMMARY				
	10				

NATIONAL GOVERNMENT CONSTITUENCIES  
 DEVELOPMENT FUND BOARD  
 23 JUN 2022  
 CORPORATE SOCIAL RESPONSIBILITY  
 PROGRAMME

ITEM NO	DESCRIPTION	QTY	UNIT	RATE	SHS
	<b><u>WINDOWS</u></b>				
	<u>Mild Steel</u>				
	<u>Fabricate ,Supply and fix including ground smooth weld joints with ' I' sections and 25x25 mm ' Z' sections prepare and apply red oxide primer before delivery including brass window stays and fasteners to Architect's approval:</u>				
A	Composite window size 1800x1500 mm consisting of 2NO. opening lights size 600x1500mm , 1NO.fixed light and ventlight	6	NO		
B	Ditto 1800x1000 mm Ditto, 2NO. Opening lights, 1NO. fixed light and ventlight	6	NO		
	<u>Glazing</u>				
C	4mm Thick clear glass in panes 0.10 to 0.50 square metres and glazing metal with linseed oil putty	30	SM		
	<u>Precast Concrete</u>				
D	265X75 mm Window cill in concrete ( 1:2:4) including moulds, throating, top weathered and hoist and fix in position	25	LM		
	Carried to Collection				
	11				



ITEM NO	DESCRIPTION	QTY	UNIT	RATE	SHS
	<u>Painting and Decorating</u>				
	<u>Internally</u>				
A	Prepare and apply one under coat and three coats of gloss oil paint from Crown Berger or Dura Coat to general surfaces of metal	30	SM		
	<u>Externally</u>				
B	Ditto Surfaces of metal	30	SM		
	Carried to Collection				
	<u>COLLECTION</u>				
	From Page 11				
	" " 12				
	TOTAL FOR WINDOWS CARRIED TO MAIN SUMMARY				
	12				

NATIONAL GOVERNMENT CONSTITUENCIES  
 DEVELOPMENT FUND BOARD  
 23 JUN 2022  
 CORPORATE SOCIAL RESPONSIBILITY  
 PROGRAMME

ITEM NO	DESCRIPTION	QTY	UNIT	RATE	SHS
<b><u>FINISHES</u></b>					
<b><u>EXTERNAL FINISHES</u></b>					
A	12 mm Thick cement and sand (1:4) rendering to concrete surfaces woodfloat finished	165	SM		
B	12 mm Ditto to walls and reveals	17	SM		
<b><u>Painting and Decorating</u></b>					
C	Prepare and apply three coats plastic emulsion paint from Crown Berger or Dura Coat to plastered surfaces	182	SM		
<b><u>Internal Wall Finishes</u></b>					
D	12 mm Thick plaster plus cement and sand (1:4) steel float finished	275	SM		
<b><u>Painting and Decorating</u></b>					
E	Prepare and apply three coats plastic emulsion vinyl silk cream paint from Crown Berger or Dura Coat to plastered surfaces	275	SM		
F	Extra over plastering for black board and prepare and apply three coats of bitumastic paint ditto	24	SM		
	Carried to Collection				
	13				

**NATIONAL GOVERNMENT CONSTITUENCIES  
 DEVELOPMENT FUND BOARD**  
  
**23 JUN 2022**  
  
**CORPORATE SOCIAL RESPONSIBILITY  
 PROGRAMME**

ITEM NO	DESCRIPTION	QTY	UNIT	RATE	SHS
	<u>Floor Finishes</u>				
A	20 mm Thick cement and sand ( 1:3 ) floor screed wood float finished to receive tiles (M.S)	254	SM		
	<u>CERAMIC TILES</u>				
B	8 mm Thick ceramic floor tiles size 300x300 mm laid with cement grout and joints pointed with white cement	254	SM		
C	8 mm Ditto and 100 mm high skirting	127	LM		
	<u>Ceiling</u>				
D	12 mm Thick cement and sand (1:4) plastering to soffit of suspended slap steel float finished	254	SM		
E	12 mm Ditto to sloping soffit of ramp ditto	50	SM		
	<u>Painting and Decorating</u>				
F	Prepare and apply three coats of plastic emulsion paint to general surfaces of plastered ceiling (Brilliant white)	254	SM		
G	Ditto plastered sloping soffit ditto	50	SM		
	Carried to Collection				





ITEM NO	DESCRIPTION	QTY	UNIT	RATE	SHS
	<u>FIXTURES</u>				
	<u>The following in 3NO.Black Board size 5000x1500 mm</u>				
A	12 mm Thick plaster (1:4) to walls as before	23	SM		
B	Prepare and apply three coats of black matt to walls	23	SM		
C	50X25 mm Wrot Cypress moulded bead with groove at bottom for chalk framing round board plugged and duster holder <u>The following in 3NO.Notice Board size 2400x1200 mm</u>	39	LM		
D	12 mm Thick soft board	9	SM		
E	50X25 mm Wrot Cypress moulded framing plugged	22	LM		
	<u>Painting and Decorating</u>				
F	Prepare and apply one under coat and three coats of brilliant white emulsion paint to general surfaces of soft board	9	SM		
G	Prepare and apply one under coat and three coat of gloss oil paint to general surfaces of wood work to 100 mm girth	22	LM		
	Carried to Collection				

16

NATIONAL GOVERNMENT CONSTITUENCIES  
DEVELOPMENT FUND BOARD

23 JUN 2022

CORPORATE SOCIAL RESPONSIBILITY  
PROGRAMME



ITEM NO	DESCRIPTION	QTY	UNIT	RATE	SHS
	<b>ELECTRICAL INSTALLATION</b>				
	<b>ELECTRICAL WORKS TO BE EXECUTED BY SPECIALIST REGISTERED BY KPL</b>				
	<u>Supply , install , test and commission the following:</u>				
A	Lighting points wired in 3x1.5mm <sup>2</sup> SC PVC CU cables drawn in 20mm dia HG PVC conduits with all necessary accessories excluding switches and fittings for one way switching	29	NO		
B	10A moulded ivory switch plate as crabtree or approved equivalent as follows: i.Two way one gang	3	NO		
	ii. Three way one gang	1	NO		
C	Lighting fittings complete with fixing accessories and lamps as follows: i). 1200mm lx 36w florescent batten fitting or slim cross section with clip on cover plate and adjustable end cap system as Thorn Popular Pack batten or approved equivalent	21	NO		
D	ii)Bulkhead fitting with aluminium body on Thorn or approved equivalent with Energy saving bulb	8	NO		
E	Socket outlets Power outlets i.Comprising of wiring in 3x2.5mm <sup>2</sup> PVC SC CU in concealed HG conduits	6	NO		
	ii. 13A 2gang switched moulded socket outlet as crabtree or approved equivalent	3	NO		
	Consumer Units and Distribution Boards				
F	4-Way SP/N consumer unit flush mounted on wall complete with a 10A SP/N integral isolator as crabtree or approved equivalent	1	NO		
G	Single Pole maniaature circuit breaker as follows: i.5ASP	1	NO		
	ii.30asp	2	NO		
	iii.Blanking covers	1	NO		
	Carried to Collection	18			

**NATIONAL GOVERNMENT CONSTITUENCIES**  
**DEVELOPMENT FUND BOARD**  
**23 JUN 2022**  
**CORPORATE SOCIAL RESPONSIBILITY**  
**PROGRAMME**

ITEM NO	DESCRIPTION	QTY	UNIT	RATE	SHS
A	Sub-mains Cables 3x6.0mm <sup>2</sup> SCPVC CU cables drawn in HG conduit	10	LM		
B	Standard cable looping box complete with single cut out fuse neutral link	1	NO		
C	Electrical earthing comprising of 6.0mm <sup>2</sup> SC PVC CU cable drawn in HG conduits 1500mm times 15mm copper electrodes c/w clamps pre-cast concrete inspection pit with cover	ITEM		SUM	
D	Testing and commissioning	ITEM		SUM	
E	Allow for supply and fixing Copper Lighting arrestors, w	1	NO		
	Carried to Collection				
	<u>COLLECTION</u>				
	From Page 19				
	" " 20				
TOTAL FOR ELECTRICAL INSTALLATION CARRIED TO SUMMARY					
19					

NATIONAL GOVERNMENT CONSTITUENCIES  
DEVELOPMENT FUND BOARD  
23 JUN 2022  
CORPORATE SOCIAL RESPONSIBILITY  
PROGRAMME

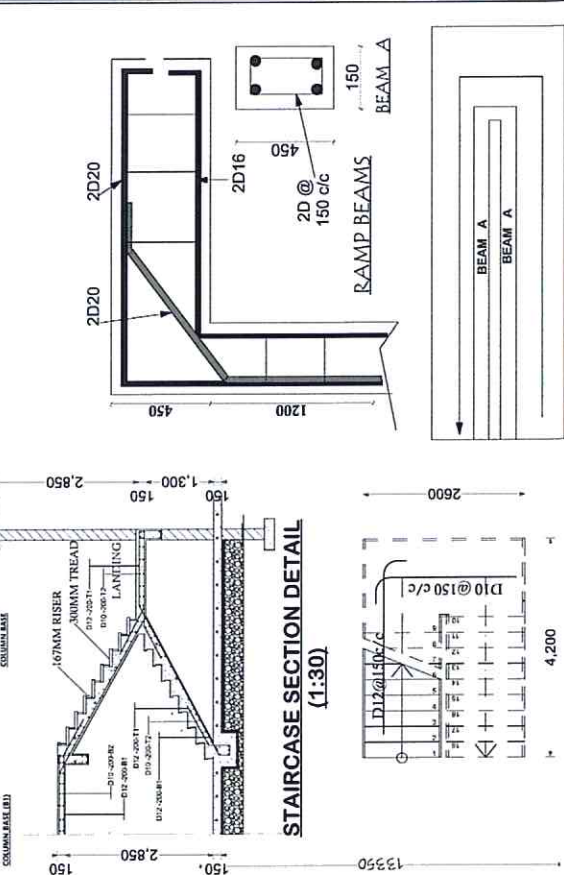
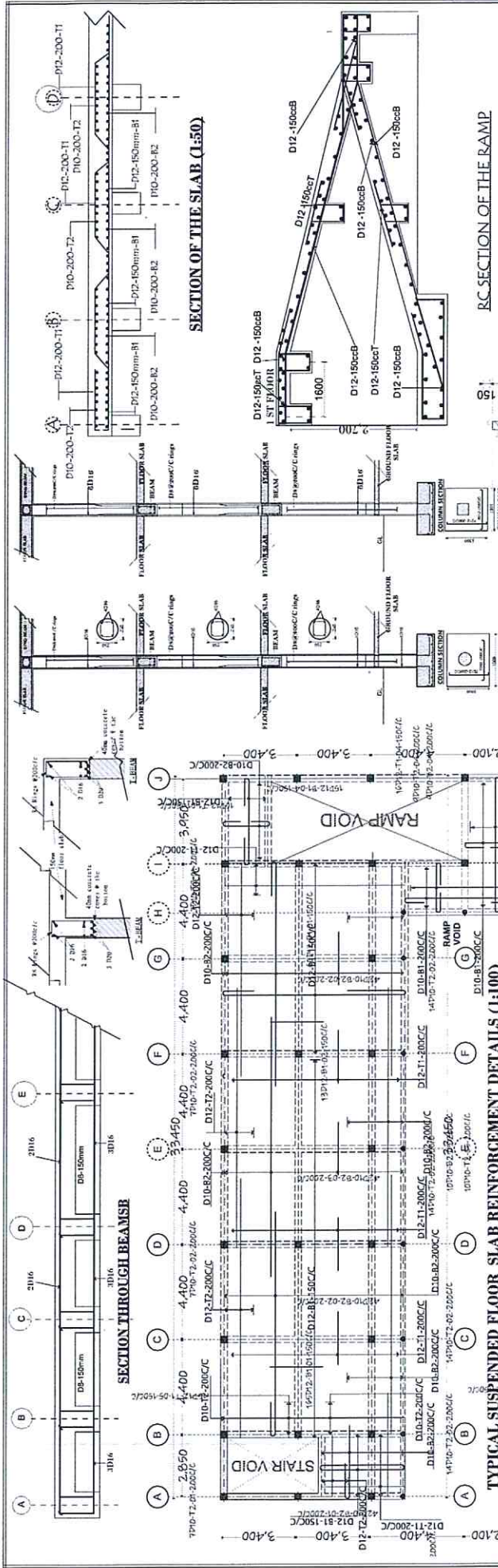
ITEM NO	DESCRIPTION	QTY	UNIT	RATE	SHS
	<p><u>PRIME COST AND PROVISIONAL SUMS</u>  <u>EXPENDITURE FOR ITEMS HERE BELOW SHALL BE APPROVED BY NG-CDF BOARD</u>  <u>The following sums shall be expended upon Architect's instructions and may be omitted in whole:</u></p>				
A	Allow for a Provisional Sum of Kenya Shillings One Hundred Thousand ( Kshs.100,000/) for Contingency	ITEM		SUM	100,000
B	Allow for a Prime Cost Sum of Kenya Shillings Fifty Thousand ( Kshs.50,000/) for Supply and Delivery of 9KG and 2NO. Water base and 9 Litre X2NO. Carbon dioxide Fire extinguishers mounted on walling to approval	ITEM		SUM	50,000
C	Allow for Branding of Project in accordance with NG-CDF Board Specifications	ITEM		SUM	15,000
	<u>FURNITURE</u>				
	<u>Fabricate desks from 25x25 mm RHS heavy duty tubular and wrot cypress timber:</u>				
D	Allow for a Provisional Sum of Kenya Shillings (Kshs 286,000.00) for Fabrication and Supply of 68NO Ordinary Desk ,3NO.Teachers' and 3NO.Chairs to be supplied by an approved Supplier with specifications from County Works Officer and Head Teacher	ITEM		SUM	286,000
E	Allow for Transport to site	ITEM		10%	28,600
	TOTAL FOR PRIME COST AND PROVISIONAL SUMS CARRIED TO MAIN SUMMARY				

20



ITEM NO	DESCRIPTION	SHS
<b>PROPOSED CONSTRUCTION OF 3NO.CLASSROOMS</b>		
<u>MAIN SUMMARY</u>		
A	SUBSTRUCTURE	
B	REINFORCED CONCRETE SUPERSTRUCTURE	
C	WALLING	
D	DOORS	
E	WINDOWS	
F	FINISHES	
G	FIXTURES	
H	ELECTRICAL INSTALLATION	
I	PRIME COST AND PROVISIONAL SUMS	
J	PRELIMINARIES	
	SUB-TOTAL	
	ADD VAT 16%	
	TOTAL COST OF 3NO.CLASSROOMS CARRIED TO	
	FORM OF TENDER	
	21	

NATIONAL GOVERNMENT CONSTITUENCIES  
 DEVELOPMENT FUND BOARD  
  
**23 JUN 2022**  
  
 CORPORATE SOCIAL RESPONSIBILITY  
 PROGRAMME



**PLAN FOR THE RAMP**

**STAIRCASE REINFORCEMENT DETAIL (1:30)**

**REVISIONS**

No.	Description	Date

**CONSULTANTS:**  
 MINISTRY OF ROADS, PUBLIC WORKS AND TRANSPORT

**PROJECT:** THE PROPOSED 40VELOC DUTTON BLOCK COLLEGE AND PLAY AREA ON GIBBS ROAD, PRIMARY SCHOOL

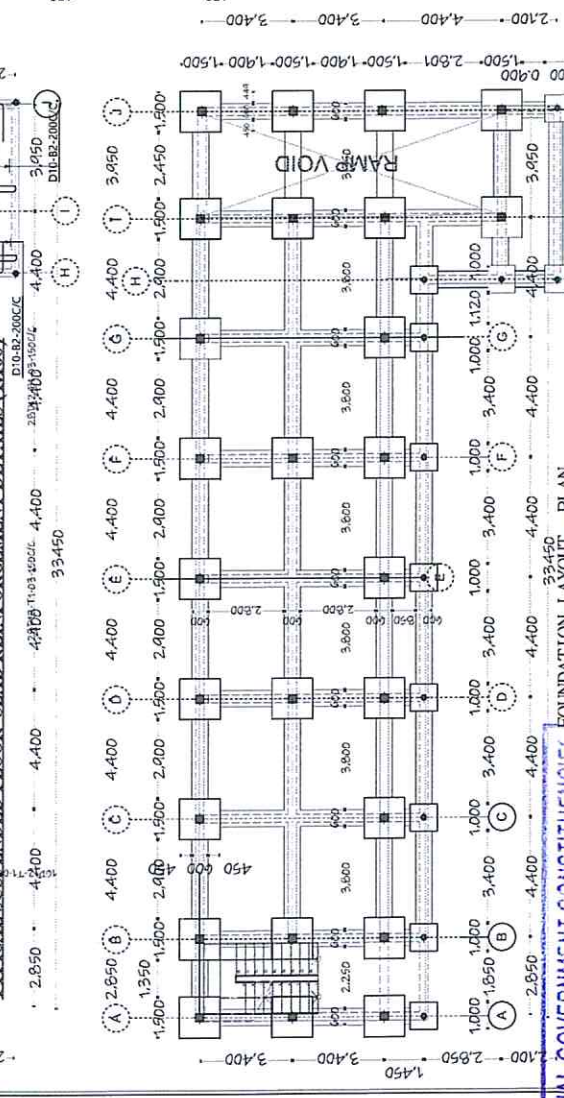
**CLIENT:** MINISTRY OF ROADS, PUBLIC WORKS AND TRANSPORT

**DESIGNER:** [Name]

**CHECKED:** [Name]

**APPROVED:** [Name]

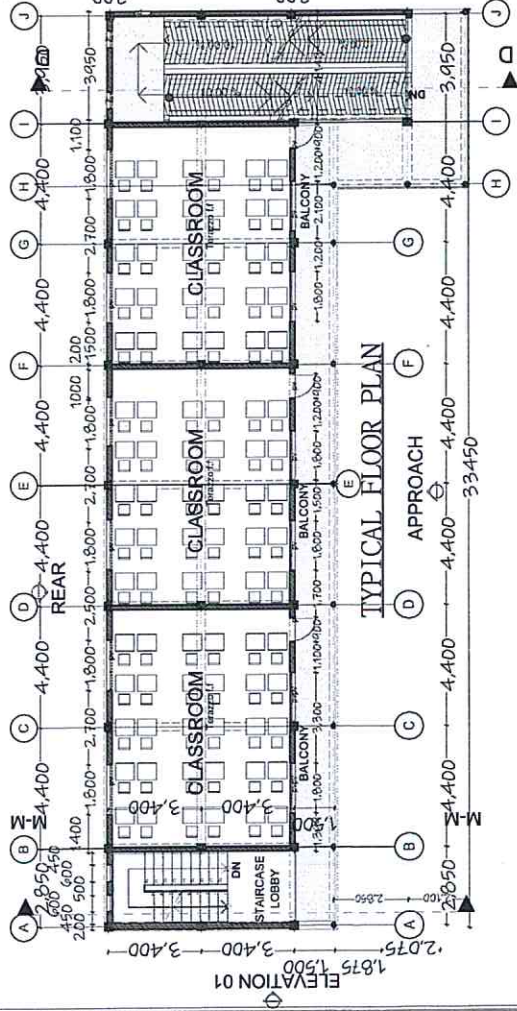
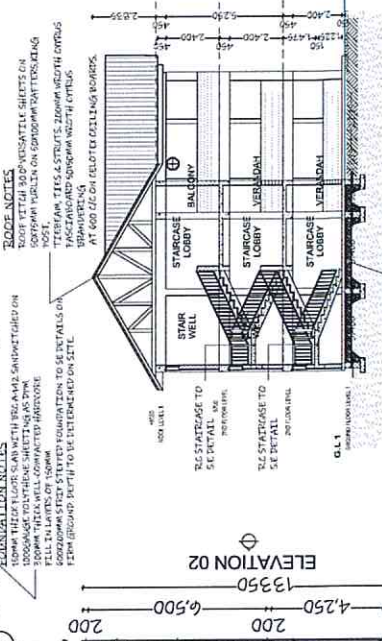
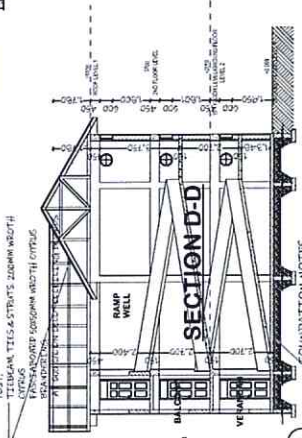
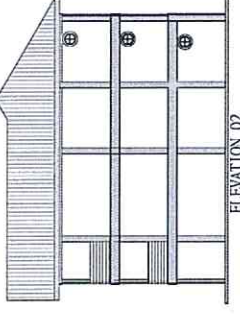
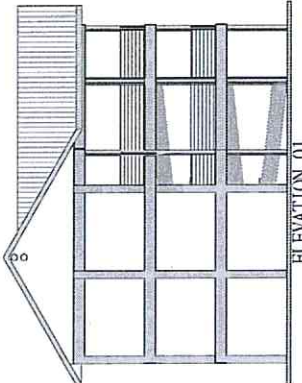
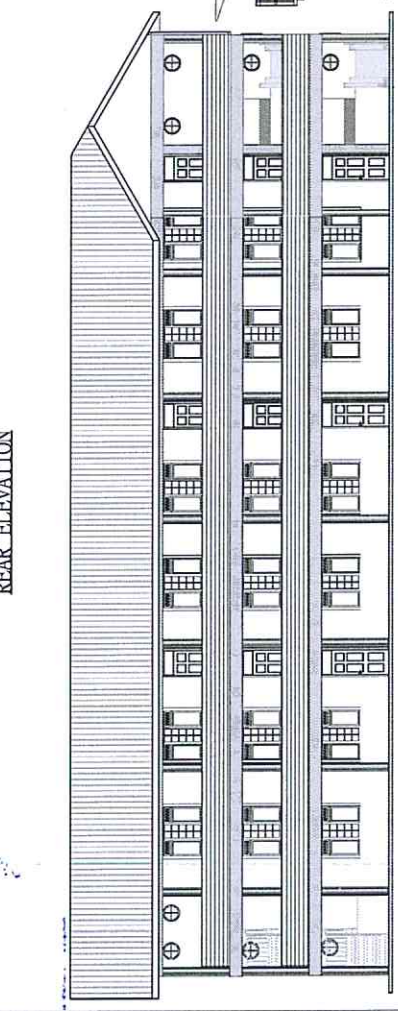
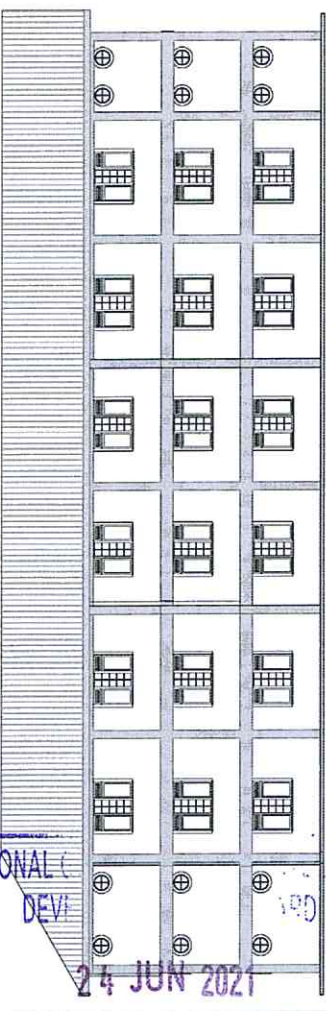
**DATE:** MAY 2021



**NATIONAL GOVERNMENT CONSTITUENCIES DEVELOPMENT FUND BOARD**

**24 JUN 2021**

**CORPORATE SOCIAL RESPONSIBILITY PROGRAMME**



- NOTES:**
- GENERAL**
- The drawing is prepared on computer and correct use of
  - All measurements are shown in millimeters. Dimensions not to be scaled. Only related dimensions to be used
  - The contractor must check and verify all dimensions on site before commencement of any work. Discrepancies must be reported to the architect immediately.
  - All work must be done in accordance with the approved drawings and specifications. The contractor must ensure that all work is done in accordance with the approved drawings and specifications.
- CONSTRUCTION**
- Design of concrete must be provided under all structural walls, columns, slabs, etc. to be in accordance with the approved drawings and specifications.
  - Design of concrete must be provided under all structural walls, columns, slabs, etc. to be in accordance with the approved drawings and specifications.
  - Design of concrete must be provided under all structural walls, columns, slabs, etc. to be in accordance with the approved drawings and specifications.
  - Design of concrete must be provided under all structural walls, columns, slabs, etc. to be in accordance with the approved drawings and specifications.
- CIVIL**
- All work on site must be done in accordance with the approved drawings and specifications.
  - All work on site must be done in accordance with the approved drawings and specifications.
  - All work on site must be done in accordance with the approved drawings and specifications.
  - All work on site must be done in accordance with the approved drawings and specifications.
- STRUCTURAL**
- All work on site must be done in accordance with the approved drawings and specifications.
  - All work on site must be done in accordance with the approved drawings and specifications.
  - All work on site must be done in accordance with the approved drawings and specifications.
  - All work on site must be done in accordance with the approved drawings and specifications.
- MECHANICAL**
- All work on site must be done in accordance with the approved drawings and specifications.
  - All work on site must be done in accordance with the approved drawings and specifications.
  - All work on site must be done in accordance with the approved drawings and specifications.
  - All work on site must be done in accordance with the approved drawings and specifications.
- ELECTRICAL**
- All work on site must be done in accordance with the approved drawings and specifications.
  - All work on site must be done in accordance with the approved drawings and specifications.
  - All work on site must be done in accordance with the approved drawings and specifications.
  - All work on site must be done in accordance with the approved drawings and specifications.
- RAINFALL DISPOSAL**
- All work on site must be done in accordance with the approved drawings and specifications.
  - All work on site must be done in accordance with the approved drawings and specifications.
  - All work on site must be done in accordance with the approved drawings and specifications.
  - All work on site must be done in accordance with the approved drawings and specifications.

DATE	REVISIONS, ADDITIONS & ALTERATIONS	DESCRIPTION	BY

CLIENT: NYANSANCHA DEB PRIMARY SCHOOL

SIGNATURE: \_\_\_\_\_

PROJECT: THE PROPOSED STOREYED TUITION BLOCK COMPLEX AT NYANSANCHA DEB PRIMARY SCHOOL

CONSULTANTS: MINISTRY OF ROADS, PUBLIC WORKS AND TRANSPORT

DRAWING TITLE: FLOOR PLAN, ELEVATIONS AND SECTIONS

SCALE: ARCHITECT: 1:1000, CIVIL: 1:500, ELECTRICAL: 1:500, MECHANICAL: 1:500