

REPUBLIC OF KENYA



MINISTRY OF TRANSPORT, INFRASTRUCTURE, HOUSING, PUBLIC WORKS AND URBAN DEVELOPMENT  
STATE DEPARTMENT OF PUBLIC WORKS

**BILLS OF QUANTITIES  
FOR  
PROPOSED CONSTRUCTION OF  
5.NO.PRIMARY CLASSROOMS  
AT  
KIBIGOR PRIMARY SCHOOL**

**Prepared by:-**

**COUNTY QUANTITY SURVEYOR,  
ELGEYO MARAKWET  
P. O. Box 312-30700,  
ITEN.**

**COUNTY QUANTITY SURVEYOR R  
ELGEYO MARAKWET,  
P.O Box 312-30700,  
ITEN.**

**Issued by:-**

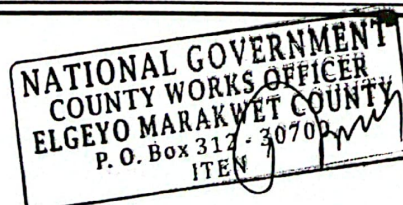
**COUNTY ELECTRICAL ENG,  
ELGEYO MARAKWET,  
P. O. Box 312-30700,  
ITEN.**

**COUNTY ELECTRICAL ENGINEER,  
ELGEYO MARAKWET,  
P. O. Box 312-30700,  
ITEN**

**COUNTY MECHANICAL ENGINEER(BS),  
ELGEYO MARAKWET  
P. O. Box 312-30700,  
ITEN.**

**REGIONAL STRUCTURAL ENGINEER  
NORTH RIFT REGION  
P.O Box 312-30700,  
ITEN**

**APRIL 2024**



## FORM OF TENDER

TO: \_\_\_\_\_ ( Name of Employer)

\_\_\_\_\_

\_\_\_\_\_

Date: \_\_\_\_\_

Dear Sir,

**REF: PROPOSED CONSTRUCTION OF 5.NO. CLASSROOMS AT KIBIGOR PRIMARY SCHOOL SOY SOUTH WARD IN KEIYO SOUTH CONSTITUENCY.**

1. In accordance with the instructions to tenderers, conditions of contract specifications and bill of quantities for the execution of the above named works, we the undersigned offer to carry out the works at Kshs. \_\_\_\_\_ ( amount in figures) \_\_\_\_\_
2. We undertake , if our tender is accepted , to commence the works as soon as is reasonably possible after the receipt of the employer's representatives' notice to commence, and to complete the works comprised in the contract within the time stated in the appendix to conditions of contract.
3. We agree to abide by this tender for a period of 120 days from the date of the tender opening and shall remain binding upon us may be accepted at any time before that date.
4. Unless and until a formal agreement is prepared and executed this tender together with your written acceptance thereof, shall constitute a binding contract between us.

5. We understand that you are not bound to accept the lowest or any tender you may receive.

Dated this \_\_\_\_\_ day of \_\_\_\_\_

Signature \_\_\_\_\_ in the capacity of \_\_\_\_\_

\_\_\_\_\_ duly authorised to sign tenders for and on behalf of

\_\_\_\_\_

(Name of tenderer)

\_\_\_\_\_

Address of tenderer.

\_\_\_\_\_

## 5.NO.CLASSROOMS PRIMARY SCHOOL

NO.	DESCRIPTION	QTY	UNIT	RATE	KSHS.
<b><u>PROPOSED 5. NO.PRIMARY CLASSROOMS</u></b> <b><u>ELEMENT NO. 1</u></b>					
<b><u>SUBSTRUCTURES (ALL PROVISIONAL)</u></b>					
<b><u>Site clearance</u></b>					
A	Clear the site of grass, shrubs and all vegetation;cart away as directed.	550	SM		
B	Excavate vegetable soil average 200mm deep and cart away as directed	550	SM		
<b><u>Excavation</u></b>					
C	Excavation oversite to reduce levels commencing from stripped level average 300mm deep and spread on site av 10mts away.	120	CM		
D	Excavate for strip foundation starting from reduced level not exceeding 1.50mts deep and cart away as directed	100	CM		
E	Extra over excavation for excavating in rock	5	CM		
F	Return, fill-in and rum selected excavated material	100	CM		
G	Remove and cart away from site surplus excavated material as directed	50	SM		
<b><u>Disposal of water</u></b>					
H	Keeping all excavations free from all water including spring or running water	1	ITEM		
<b><u>Planking and strutting</u></b>					
J	Uphold the sides of all excavations	1	ITEM		
<b><u>Filling</u></b>					
K	<b><u>Hardcore filling in making up levels exceeding 250mm</u></b> thick, depositing and compacting in layers of 125mm maximum thickness.	350	SM		
L	50mm thick murrum blinding to surfaces of fill	350	SM		
<b>Total Carried to Collection</b>				<b>Kshs.</b>	

CBW/1

NO.	DESCRIPTION	QTY	UNIT	RATE	KSHS.
	<b><u>SUBSTRUCTURES (ALL PROVISIONAL)</u></b>				
	<b><u>Antitermite treatment</u></b>				
A	TERMIDOR or other equal and approved insecticide with a ten-year guarantee to surfaces of fill and tops of foundations	350	SM		
	<b><u>Concrete</u></b>				
B	50mm thick mass concrete class Q (1:3:6) to bottoms of foundations	80	SM		
	<b><u>In situ concrete; reinforced; class 20/(20mm); vibrated</u></b>				
C	Foundations in trenches irrespective of thickness	15	CM		
D	150mm thick bed	350	SM		
	<b><u>Reinforcement</u></b>				
	<b><u>Bars; high yield steel; cold work to B.S. 4461 including bends, hooks tying wire and distance blocks</u></b>				
E	12mm bars	350	Kg		
F	10mm bars	350	Kg		
	<b><u>Fabric; B.S. 1483</u></b>				
G	Reference NO. 65/66	350	SM		
<b>Total Carried to Collection</b>				<b>Kshs.</b>	

CBW/2

NO.	DESCRIPTION	QTY	UNIT	RATE	KSHS.
	<b><u>Sawn formwork to instu concrete as described</u></b>				
A	To sides; vertical or battering of strip foundations	100	SM		
B	Edge of ground floor slab; 75 to 150mm wide	150	LM		
	<b><u>Walling</u></b>				
C	200mm thick approved local natural stone; roughly squared to foundation walling; bedding and jointing in cement sand (1:3) mortar	280	SM		
	<b><u>Damp proofing</u></b>				
D	Polythene; 1000 gauge, 150mm laps (no allowance made to laps),horizontal; 1 No. layer laid on murrum blinding	350	SM		
E	200mm wide; B.S. 743 Type A bitumen hessian base 150mm laps (no allowance made for laps); horizontal, 1 No. layer, bedded in cement sand (1:3) mortar	150	LM		
	<b><u>Insitu finishing</u></b>				
F	14mm thick 2 No. coatwork cement sand (1:3) render; wood floated to concrete or blockwork base to walls; external (plinth)	150	SM		
	<b><u>Prepare and apply three coats black bituminous paint on:-</u></b>				
G	Rendered plinths, externally	100	SM		
<b>Total Carried to Collection</b>				<b>Kshs.</b>	

NO.	DESCRIPTION	QTY	UNIT	RATE	KSHS.
	<u>COLLECTION</u>				
	From page CBW/1				
	From page CBW/2				
	From page CBW/3				
	<b>Total for substructures carried to summary</b>			<b>Kshs.</b>	

CBW/4

NO. DESCRIPTION

NO.	DESCRIPTION	QTY	UNIT	RATE	KSHS.
	<u>ELEMENT NO. 2</u>				
	<u>RING BEAM</u>				
	<u>In situ concrete, reinforcement; class 20/(20mm), vibrated</u>				
A	Beams	10	CM		
	<u>Reinforcement</u>				
	<u>Bars, high yield steel, cold worked to B.S. 4461 including bends, hooks, tying wire and distance</u>				
B	Of assorted bars (12mm & 8mm diameter)	800	Kg		
	<u>Sawn formwork to insitu concrete as described</u>				
C	To sides and soffits of beams	120	SM		
<b>Total for Frame Carried to summary</b>				<b>Kshs.</b>	

CBW/5

NO.	DESCRIPTION	QTY	UNIT	RATE	KSHS.
	<u>ELEMENT NO. 3</u>				
	<u>ROOFING</u>				
	<u>Galvanised corrugated sheet roofing; 28 gauge; pre-painted</u>				
A	Roof covering not exceeding 450 from horizontal; fixing to timber structure (m/s) with roofing nails and neoprene washers J bolts nuts neoprene washers and caps.	550	SM		
	<u>Accessories, fixing as necessary to proof</u>				
B	Ridge cap	60	LM		
	<u>CARPENTRY</u>				
	<u>The following in sawn celcured cypress</u>				
C	150 x 50mm sawn cypress tie beam	250	LM		
D	150 x 50mm rafters	300	LM		
E	100 x 50mm wall plate ra-bolted at 1200mm centres with 12mm diameter bolts (m/s)	120	LM		
F	100 x 50mm king posts	200	LM		
G	100 x 50mm sawn cypress struts& ties	300	LM		
H	75 x 50mm sawn cypress purlins	500	LM		
	<b>Carried to collection</b>				
				<b>Kshs.</b>	

CBW/6

NO.	DESCRIPTION	QTY	UNIT	RATE	KSHS.
	<b><u>Wrot cypress purlin grade</u></b>				
A	200 x 25mm thick fascia board	180	LM		
	<b><u>Painting and Decorations</u></b>				
	<u>On Woodwork</u>				
	<u>Prepare and apply one undercoat and two coats of 'CROWN SOLO' or other equal and approved super gloss oil paint to: -</u>				
B	Fascia; 200 to 300mm girth; external	200	LM		
	<u>On Metal work</u>				
	<u>Prepare and apply one approved etching primer, one undercoat and two coats of 'CROWN SOLO' or other equal and approved super gloss oil paint to:-</u>				
C	General surfaces of gutters; over 300mm girth external	80	SM		
D	Small pipes; external	30	SM		
	<b>Carried to collection</b>			<b>Kshs.</b>	

CBW/7

NO.	DESCRIPTION	QTY	UNIT	RATE	KSHS.
	ELEMENT NO. 4				

S.

NO.	DESCRIPTION				KSHS.
	COLLECTION				
	From page CBW/6				
	From page CBW/7				
<b>Total for roofing carried to summary</b>					<b>Kshs.</b>

CBW/8

NO.	DESCRIPTION	QTY	UNIT	RATE	KSHS.
	<u>ELEMENT NO. 4</u>  <u>EXTERNAL &amp; INTERNAL WALLING</u>  <u>NATURAL STONE WALLING.</u>  A 200mm thick approved local; machine cut; bedding, jointing and pointing in cement sand (1:3) mortar	500	SM		
	<b>Total for External &amp; Internal walling carried to summary</b>			Kshs.	

CBW/9

NO.	DESCRIPTION	QTY	UNIT	RATE	KSHS.
<u>ELEMENT NO. 5</u>	<u>DOORS</u>				
	<u>Steel Door</u>				
D	Door size 1200 x 2400mm high double door with all necessary accessories	5	No.		
<b>Carried to Collection</b>				<b>Kshs.</b>	

CBW/10

NO.	DESCRIPTION	QTY	UNIT	RATE	KSHS.
	<b><u>Iron Mongery</u></b>				
	<b><u>Supply and fix the following to UNION catalogue or other equal and approved</u></b>				
A	steel door lock	5	No		
B	Rubber door stop complete with 38mm rawl bolt	5	No		
	<b><u>Painting and Decorations</u></b>				
	<b><u>On Metal work</u></b>				
	<b><u>Prepare and apply three coats oil paint full gloss to Crown Solo or other equal and approved to: -</u></b>				
C	General surfaces of all doors; over 300mm girth internal	40	SM		
	<b><u>Metal primer or other equal and approved wood primer before fixing:-</u></b>				
E	Backs of steel door frame over 100mm but not exceeding 200mm girth	40	LM		
	<b><u>Prepare and apply three coats Gloss oil paint to:-</u></b>				
F	steel ; over 100mm but not exceeding 200mm girth	40	LM		
<i>Carried to collection</i>					
	<b><u>COLLECTION</u></b>				
	From page CBW/11				
	From Above				
<b>TOTAL FOR DOORS CARRIED TO SUMMARY</b>				<b>Kshs.</b>	

CBW/11

NO.	DESCRIPTION	QTY	UNIT	RATE	KSHS.
	<p><u>ELEMENT NO. 6</u></p> <p><u>WINDOWS</u></p> <p><u>Supply, assemble and fix the following purpose-made mild steel casement windows; standard metal section from approved manufacturer complete with frames, transomes, mullions and with and including permanent ventilators comprising "T" bar, gauze and 16 gauge sheet metal hood 50mm high and 50mm projection to full width of window, coupling mullions, approved ironmongery and one coat manufacturer's primer; all welding ground to smooth finish.</u></p> <p>Steel; for glazing with putty, lugs to two jambs, cutting and pinning to concrete or blockwork, fixing to head and sill with screws, plugging</p>				
A	Window, overall size 1500 x 1500mm high with	15	No.		
B	Ditto' 1500 x1200	10	No.		
Carried to Collection				Kshs.	

NO.	DESCRIPTION	QTY	UNIT	RATE	KSHS.
	<u>GLAZING</u>				
A	5mm Thick clear sheet glass panes over 0.1 but not exceeding 0.5 square meters; fixing with putty.	50	SM		
	<u>Painting and Decorations</u>				
	<u>On Metal Work</u>				
	<u>Prepare and apply three coats oil paint full gloss to Crown Solo or other equal and approved to:-</u>				
B	General window surfaces	10	SM		
C	Surfaces of metal (burglar proofing grills)	40	SM		
<i>Carried to Collection</i>					
	<u>COLLECTION</u>				
	From page CBW/13				
	From Above				
<b>Total for Windows Carried to Summary</b>				<b>Kshs.</b>	

NO.	DESCRIPTION	QTY	UNIT	RATE	KSHS.
	<u>ELEMENT NO. 7</u>				
	<u>FINISHES</u>				
	<u>Wall finishes</u>				
	<u>Plaster; 12mm thick 2 No. coatwork, 9mm first coat of cement sand (1:6); 3mm second coat of cement and lime putty (1:10); steel trowelled to concrete or blockwork base generally to:-</u>				
A	Walls; internal	350	SM		
B	Extra over horizontal pointing in 10mm thick rod in cement and sand (1:3) mortar to external wall	350	SM		
	<u>Painting and decorations</u>				
	<u>Prepare and apply three coats of first quality plastic emulsion paint to:-</u>				
C	Plastered walls and beams	350	SM		
	<u>Prepare and apply three coats black bituminous paint to:</u>				
D	Chalkboard	30	SM		
<b>Carried to Collection</b>				<b>Kshs.</b>	

NO.	DESCRIPTION	QTY	UNIT	RATE	KSHS.
	<u>Floor finishes</u>				
	<u>Beds and backings</u>				
A	32mm thick cement: sand screed ready to receive tiles(m.s)	350	SM		
B	19mm thick ceramic floor tiles	350	SM		
C	100mm ceramic skirting	200	LM		
	<u>Verandah supports</u>				
	<u>Supply and fix:-</u>				
D	75mm diameter CHS embedded in floor slab	60	LM		
<b>Carried to Collection</b>				<b>Kshs.</b>	

CBW/15

NO.	DESCRIPTION	QTY	UNIT	RATE	KSHS.
	<b><u>Ceiling finishes</u></b>				
	<b><u>Approved wrot cypress; prime grade; pressure impregnated</u></b>				
A	100 x 25mm moulded cornice	150	LM		
	<b><u>Approved sawn softwood; second grade; pressure impregnated</u></b>				
B	50 x 50mm brandering	500	LM		
C	75 x 50mm joists	500	LM		
	<b><u>PLAIN SHEET FINISHINGS</u></b>				
	<b><u>Celotex Ceiling boards</u></b>				
D	13mm thick nailed to 50 x 50mm timber brandering (m/s), nails punched and puttied; set to pattern screws	350	SM		
E	Extra; access panels 600 x 600mm, 50 x 50mm softwood framing all round; fixing with chromium plated screws and cup washers	5	No.		
	<b><u>Painting and Decorations</u></b>				
	<b><u>To wood surfaces</u></b>				
	<b><u>Knot, prime &amp; stop and prepare and apply three coats polyurethane matt varnish on woodwork internally</u></b>				
F	Moulded cornice not exceeding 100mm girth	150	LM		
	<b><u>Prepare and apply three coats oil paint full gloss to Crown Solo or other equal and approved to:-</u></b>				
G	Softboard surfaces	350	SM		
	<b><u>BRANDING</u></b>				
H	ALLOW SUM FOR PLASTERING AND BRANDING COST OF APPROX. 2.5M <sup>2</sup> SURFACE	1	ITEM		
	<b><u>RAMP</u></b>				
I	Construct Ramp using hardcore and Fix 1;2;4 concrete mix and tiles at door entrance	1	ITEM		
	<b><u>PAVING SLAB</u></b>				
J	50mm thick cast in-situ concrete (1:2:4 mix) slab on well compacted Hardcore surface ( all inclusive)	60	SM		
	<b>Total Carried to collection</b>			<b>Kshs.</b>	

CBW/16

11

NO.	DESCRIPTION	QTY	UNIT	RATE	KSHS.
	<u>COLLECTION</u>				
	From page CBW/14				
	From page CBW/15				
	From page CBW/16				
<b>Total for Finishes Carried to Summary</b>				<b>Kshs.</b>	

CBW/17

ITEM	DESCRIPTION	QTY	UNIT	RATE	KSHS.
	<b>2.NO.CLASSROOMS</b>				
	<b><u>ELECTRICAL INSTALLATION WORKS</u></b>				
	Supply, install, test and commission the following:				
	<b><u>LIGHTING POINTS</u></b>				
A	Lighting point wired in 3 x 1.5mm <sup>2</sup> SC-PVC-Cu drawn in 20mm diameter HG PVC conduits concealed inside ceiling complete with all necessary accessories excluding switches and fittings for one way switching	40	No.		
	<u>10A moulded ivory switch plates as Crabtree or approved equivalent as follows:-</u>				
B	i) One gang one way	5	No.		
C	ii) Two gang two way	5	No.		
	<b><u>LIGHTING FITTINGS</u></b>				
	Light fittings complete with fixing accessories and lamps as follows:-				
D	i) 1200mm 1 x 18W LED fitting of slim cross section with dip-on cover plate and adjustable end cap system.	12	No		
E	ii) Ditto but 1200mm 2 x 18W	20	No.		
F	iii) 30W LED floodlight as IP66 approved or equivalent.	6	No		
	<b><u>SOCKET OUTLETS AND POWER POINTS</u></b>				
G	Socket outlet point comprising wiring in 3 x 2.5mm <sup>2</sup> PVC-SC-Cu cables in concealed in conduits.	32	No.		
H	13A 2-gang switched moulded socket outlet plate as Crabtree or approved equivalent.	32	No.		
	<b><u>CONSUMER UNITS/DISTRIBUTION BOARDS</u></b>				
J	10-way SP/N consumer unit flush mounted on wall complete with a 100A SP/N integral isolator as CRABTREE or approved equivalent.	1	No.		
	Single pole Miniature Circuit Breakers to fit into the above consumer unit as follows:-				
K	i) 10A SP	6	No.		
L	ii) 30A SP	4	No.		
M	iii) Blanking plates	10	No.		
<b>Total Carried Forward to Next Page</b>				<b>Kshs.</b>	

ITEM	DESCRIPTION	QTY	UNIT	RATE	KSHS.
<b>Total Brought Forward from Previous Page</b>					
<b><u>SUB-MAINS CABLES</u></b>					
A	3 x 16.0mm <sup>2</sup> single-Core copper cables drawn inside HG conduits	200	LM		
B	Standard cable loop-in box made in gauge 14swg galvanised steel sheet:-	1	No.		
C	Cut-out complete with SP 80A HRC fuses	1	No.		
D	Single tariff meterbox made from gauge 14swg galvanized steel sheet complete with bonding screw/bolt and viewing glass	1	No.		
E	Electrical earthing comprising 6.0mm <sup>2</sup> single-Core copper cables drawn inside HG conduits, 1500mm by 15mm diameter copper electrode complete with clamp and a pre-cast concrete inspection pit with cover.	1	Item		
F	Allow sum of ten thousand shillings for electrical connection	1	Item		
<b>Total for Electrical Works - C/F to Summary Page</b>				<b>Kshs.</b>	
TSC-EL-19					

ITEM	DESCRIPTION		RATE
<b><u>PROVISIONAL AND PRIME COST SUMS</u></b>			
A	Allow a sum of Kenya Shillings Fifty Thousand for contingencies to be deducted in whole/part as per the direction of project manager		50,000
B	Provide a Provisional sum of Kenya Shillings Fifty Thousand only for Project Management to be deducted in whole/part as per the direction of project manager		50,000
C	Allow provisional sum of Kenya shillings Thirty thousand for School BOM Administrative Fee		30,000
<b>TOTAL CARRIED SUMMARY</b>			<b>130,000</b>

NO.	DESCRIPTION	PAGE	TENDERER'S USE	FOR OFFICIAL USE
	<b><u>SUMMARY</u></b>			
1	SUBSTRUCTURES (ALL PROVISIONAL)	CBW/4		
2	FRAME	CBW/5		
3	ROOFING	CBW/8		
4	EXTERNAL & INTERNAL WALLING	CBW/9		
5	DOORS	CBW/11		
6	WINDOWS FROM PAGE	CBW/13		
7	FINISHES FROM PAGE	CBW/17		
8	ELECTRICALS	E-19		
	<b>SUB TOTAL BUILDERS WORKS</b>			
8	PRIME COST & PROVISIONAL SUMS	PC/1		
	<b>TOTAL FOR 2. NO PRIMARY CLASSROOMS</b>			
	<b>ADD 16% VAT</b>			
	<b>GRAND TOTAL CARRIED TO FORM OF TENDER</b>			

Labour at .....% of TOTAL

Amount in words Kenya Shillings .....

Construction Period: .....

Tender's Names & Signature: .....

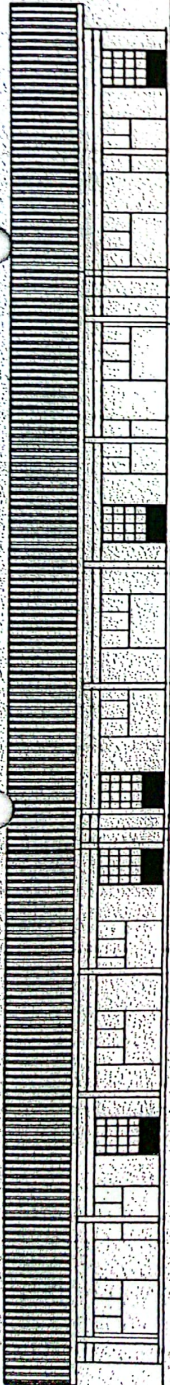
Address: .....

Date: .....

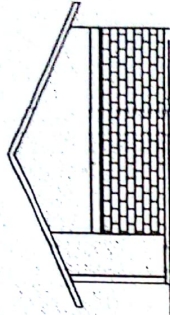
Witness Signature: .....

Address: .....

Date: .....

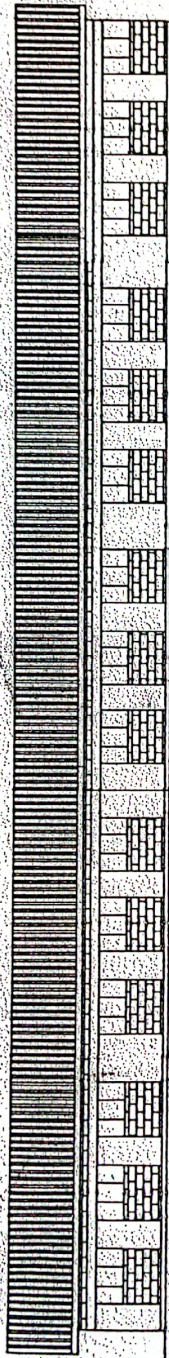


FRONT-ELEVATION 01

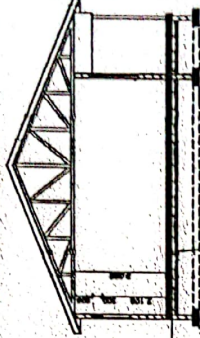


SIDE-ELEVATION 04

ROOF DETAILS  
 1. 40mm GIBBS AT 1600mm C/C ON  
 2. 40mm MATTERS AT 1600mm C/C ON  
 3. 50mm BRICKS ON  
 4. 50mm BRICKS ON  
 5. 50mm BRICKS ON  
 6. 50mm BRICKS ON  
 7. 50mm BRICKS ON  
 8. 50mm BRICKS ON  
 9. 50mm BRICKS ON  
 10. 50mm BRICKS ON  
 11. 50mm BRICKS ON  
 12. 50mm BRICKS ON  
 13. 50mm BRICKS ON  
 14. 50mm BRICKS ON  
 15. 50mm BRICKS ON  
 16. 50mm BRICKS ON  
 17. 50mm BRICKS ON  
 18. 50mm BRICKS ON  
 19. 50mm BRICKS ON  
 20. 50mm BRICKS ON  
 21. 50mm BRICKS ON  
 22. 50mm BRICKS ON  
 23. 50mm BRICKS ON  
 24. 50mm BRICKS ON  
 25. 50mm BRICKS ON  
 26. 50mm BRICKS ON  
 27. 50mm BRICKS ON  
 28. 50mm BRICKS ON  
 29. 50mm BRICKS ON  
 30. 50mm BRICKS ON  
 31. 50mm BRICKS ON  
 32. 50mm BRICKS ON  
 33. 50mm BRICKS ON  
 34. 50mm BRICKS ON  
 35. 50mm BRICKS ON  
 36. 50mm BRICKS ON  
 37. 50mm BRICKS ON  
 38. 50mm BRICKS ON  
 39. 50mm BRICKS ON  
 40. 50mm BRICKS ON  
 41. 50mm BRICKS ON  
 42. 50mm BRICKS ON  
 43. 50mm BRICKS ON  
 44. 50mm BRICKS ON  
 45. 50mm BRICKS ON  
 46. 50mm BRICKS ON  
 47. 50mm BRICKS ON  
 48. 50mm BRICKS ON  
 49. 50mm BRICKS ON  
 50. 50mm BRICKS ON  
 51. 50mm BRICKS ON  
 52. 50mm BRICKS ON  
 53. 50mm BRICKS ON  
 54. 50mm BRICKS ON  
 55. 50mm BRICKS ON  
 56. 50mm BRICKS ON  
 57. 50mm BRICKS ON  
 58. 50mm BRICKS ON  
 59. 50mm BRICKS ON  
 60. 50mm BRICKS ON  
 61. 50mm BRICKS ON  
 62. 50mm BRICKS ON  
 63. 50mm BRICKS ON  
 64. 50mm BRICKS ON  
 65. 50mm BRICKS ON  
 66. 50mm BRICKS ON  
 67. 50mm BRICKS ON  
 68. 50mm BRICKS ON  
 69. 50mm BRICKS ON  
 70. 50mm BRICKS ON  
 71. 50mm BRICKS ON  
 72. 50mm BRICKS ON  
 73. 50mm BRICKS ON  
 74. 50mm BRICKS ON  
 75. 50mm BRICKS ON  
 76. 50mm BRICKS ON  
 77. 50mm BRICKS ON  
 78. 50mm BRICKS ON  
 79. 50mm BRICKS ON  
 80. 50mm BRICKS ON  
 81. 50mm BRICKS ON  
 82. 50mm BRICKS ON  
 83. 50mm BRICKS ON  
 84. 50mm BRICKS ON  
 85. 50mm BRICKS ON  
 86. 50mm BRICKS ON  
 87. 50mm BRICKS ON  
 88. 50mm BRICKS ON  
 89. 50mm BRICKS ON  
 90. 50mm BRICKS ON  
 91. 50mm BRICKS ON  
 92. 50mm BRICKS ON  
 93. 50mm BRICKS ON  
 94. 50mm BRICKS ON  
 95. 50mm BRICKS ON  
 96. 50mm BRICKS ON  
 97. 50mm BRICKS ON  
 98. 50mm BRICKS ON  
 99. 50mm BRICKS ON  
 100. 50mm BRICKS ON

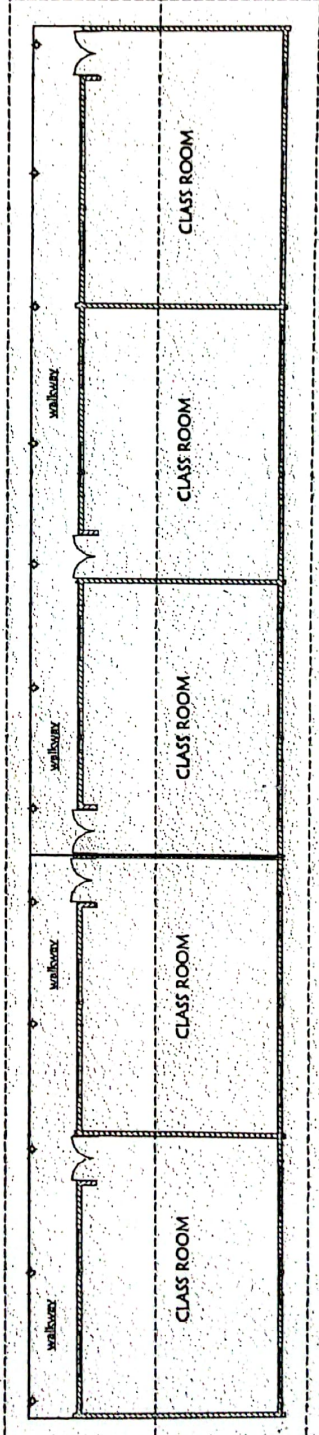


REAR-ELEVATION 02



SECTION X-X

STRUCTURE DETAILS  
 1. 200mm CONCRETE FOUNDATION  
 2. 100mm CONCRETE SLAB  
 3. 100mm CONCRETE SLAB  
 4. 100mm CONCRETE SLAB  
 5. 100mm CONCRETE SLAB  
 6. 100mm CONCRETE SLAB  
 7. 100mm CONCRETE SLAB  
 8. 100mm CONCRETE SLAB  
 9. 100mm CONCRETE SLAB  
 10. 100mm CONCRETE SLAB  
 11. 100mm CONCRETE SLAB  
 12. 100mm CONCRETE SLAB  
 13. 100mm CONCRETE SLAB  
 14. 100mm CONCRETE SLAB  
 15. 100mm CONCRETE SLAB  
 16. 100mm CONCRETE SLAB  
 17. 100mm CONCRETE SLAB  
 18. 100mm CONCRETE SLAB  
 19. 100mm CONCRETE SLAB  
 20. 100mm CONCRETE SLAB  
 21. 100mm CONCRETE SLAB  
 22. 100mm CONCRETE SLAB  
 23. 100mm CONCRETE SLAB  
 24. 100mm CONCRETE SLAB  
 25. 100mm CONCRETE SLAB  
 26. 100mm CONCRETE SLAB  
 27. 100mm CONCRETE SLAB  
 28. 100mm CONCRETE SLAB  
 29. 100mm CONCRETE SLAB  
 30. 100mm CONCRETE SLAB  
 31. 100mm CONCRETE SLAB  
 32. 100mm CONCRETE SLAB  
 33. 100mm CONCRETE SLAB  
 34. 100mm CONCRETE SLAB  
 35. 100mm CONCRETE SLAB  
 36. 100mm CONCRETE SLAB  
 37. 100mm CONCRETE SLAB  
 38. 100mm CONCRETE SLAB  
 39. 100mm CONCRETE SLAB  
 40. 100mm CONCRETE SLAB  
 41. 100mm CONCRETE SLAB  
 42. 100mm CONCRETE SLAB  
 43. 100mm CONCRETE SLAB  
 44. 100mm CONCRETE SLAB  
 45. 100mm CONCRETE SLAB  
 46. 100mm CONCRETE SLAB  
 47. 100mm CONCRETE SLAB  
 48. 100mm CONCRETE SLAB  
 49. 100mm CONCRETE SLAB  
 50. 100mm CONCRETE SLAB  
 51. 100mm CONCRETE SLAB  
 52. 100mm CONCRETE SLAB  
 53. 100mm CONCRETE SLAB  
 54. 100mm CONCRETE SLAB  
 55. 100mm CONCRETE SLAB  
 56. 100mm CONCRETE SLAB  
 57. 100mm CONCRETE SLAB  
 58. 100mm CONCRETE SLAB  
 59. 100mm CONCRETE SLAB  
 60. 100mm CONCRETE SLAB  
 61. 100mm CONCRETE SLAB  
 62. 100mm CONCRETE SLAB  
 63. 100mm CONCRETE SLAB  
 64. 100mm CONCRETE SLAB  
 65. 100mm CONCRETE SLAB  
 66. 100mm CONCRETE SLAB  
 67. 100mm CONCRETE SLAB  
 68. 100mm CONCRETE SLAB  
 69. 100mm CONCRETE SLAB  
 70. 100mm CONCRETE SLAB  
 71. 100mm CONCRETE SLAB  
 72. 100mm CONCRETE SLAB  
 73. 100mm CONCRETE SLAB  
 74. 100mm CONCRETE SLAB  
 75. 100mm CONCRETE SLAB  
 76. 100mm CONCRETE SLAB  
 77. 100mm CONCRETE SLAB  
 78. 100mm CONCRETE SLAB  
 79. 100mm CONCRETE SLAB  
 80. 100mm CONCRETE SLAB  
 81. 100mm CONCRETE SLAB  
 82. 100mm CONCRETE SLAB  
 83. 100mm CONCRETE SLAB  
 84. 100mm CONCRETE SLAB  
 85. 100mm CONCRETE SLAB  
 86. 100mm CONCRETE SLAB  
 87. 100mm CONCRETE SLAB  
 88. 100mm CONCRETE SLAB  
 89. 100mm CONCRETE SLAB  
 90. 100mm CONCRETE SLAB  
 91. 100mm CONCRETE SLAB  
 92. 100mm CONCRETE SLAB  
 93. 100mm CONCRETE SLAB  
 94. 100mm CONCRETE SLAB  
 95. 100mm CONCRETE SLAB  
 96. 100mm CONCRETE SLAB  
 97. 100mm CONCRETE SLAB  
 98. 100mm CONCRETE SLAB  
 99. 100mm CONCRETE SLAB  
 100. 100mm CONCRETE SLAB



DIMENSIONAL PLAN SCALE 1:100

APPROVED &  
 FORWARDED  
 Comm

NATIONAL GOVERNMENT  
 COUNTY WORKS OFFICE  
 ELGEO MARAKWET COUNTY  
 P.O. BOX 512-30700  
 NAIROBI

PROJECT	TITLE	CLIENT
PROPOSED SIX NO. CLASSROOM CLASSROOM	DIMENSIONAL PLAN, SECTION AND ELEVATIONS	CDFC MARAKWET KEIYO SOUTH

ITEM	DESCRIPTION	AMOUNT
	<b><u>PARTICULAR PRELIMINARIES</u></b>	
A.	<b><u>EMPLOYER</u></b> The Employer is financed by NG-CDF KEIYO SOUTH The term "Employer" and "Government" wherever used in the contract document shall be synonymous.	
B.	<b><u>PROJECT MANAGER</u></b> The term "PM" wherever used in these Bills of Quantities shall be deemed to imply the project Manager as defined in Condition 1 of the Conditions of Contract or such person or persons as may be duly authorised to represent him on behalf of the Government .	
C.	<b><u>ARCHITECT</u></b> The term "Architect" shall be deemed to mean "The P.M " as defined above whose address unless otherwise notified is Ministry of Transport, Infrastructure, Housing, Urban Development and Public Works, State Department of Public Works, P.O Box 312, Iten.	
D.	<b><u>QUANTITY SURVEYOR</u></b> The term "Quantity Surveyor" shall be deemed to mean "The P.M " as defined above whose address unless otherwise notified is Ministry of Transport, Infrastructure, Housing, Urban Development and Public Works, State Department of Public Works, P.O Box 312, Iten.	
E.	<b><u>ELECTRICAL ENGINEER</u></b> The term "Electrical Engineer" shall be deemed to mean "The P.M " as defined above whose address unless otherwise notified is Ministry of Transport, Infrastructure, Housing, Urban Development and Public Works, State Department of Public Works, P.O Box 312, Iten.	
F.	<b><u>MECHANICAL ENGINEER</u></b> The term "Mechanical Engineer" shall be deemed to mean "The P.M " as defined above whose address unless otherwise notified is Ministry of Transport, Infrastructure, Housing, Urban Development and Public Works, State Department of Public Works, P.O Box 312, Iten.	
G.	<b><u>STRUCTURAL ENGINEER</u></b> The term "Structural Engineer" shall be deemed to mean "The P.M " as defined above whose address unless otherwise notified is Ministry of Transport, Infrastructure, Housing, Urban Development and Public Works, State Department of Public Works, P.O Box 312, Iten.	
	<i>Carried to collection</i>	
ITEM	DESCRIPTION	AMOUNT

**A. PRICING ITEMS OF PRELIMINARIES**

Prices **SHALL BE INSERTED** against items of "preliminaries" in the tenderer's priced Bills of Quantities. The contractor is advised to read and understand all preliminary items.

**B. SCOPE OF CONTRACT**

The works to be carried out is as per this BQ and specification.

**C. DESCRIPTION OF THE WORKS**

The works consists of erecting and completion of **WORKS AS PER FORM OF TENDER AND BILL OF QUANTITIES**

**D. MEASUREMENTS**

In the event of any discrepancies arising between the Bills of Quantities and the actual works, the site measurements shall generally take precedence. However, such discrepancies between any contract documents shall immediately be referred to the **PROJECT MANAGER** in accordance with Clause 22 of the Conditions of Contract. The discrepancies shall then be treated as a variation and be dealt with in accordance with Clause 22 of the said Conditions.

**E. LOCATION OF SITE**

The sites of the proposed works is Located **NG-CDF KEIYO SOUTH CONSTITUENCY**. The Contractor is advised to visit the site, to familiarize with the nature and position of the site. No claims arising from the Contractor's failure to do so will be entertained.

**F. SIGNING OF THE TENDER DOCUMENTS**

The bidder shall append his / her signature and / or company 's rubberstamp on each and every page of tender document.

ITEM	DESCRIPTION	AMOUNT
A.	<p><b><u>DEMOLITIONS AND ALTERATIONS</u></b></p> <p>The Contractor is to allow for all temporary protection required during the works including ordinary and special dust screens, hoardings, barriers, warning signs, etc as directed by the Project Manager and as necessary for the adequate propping and protection of existing property, finishes, workmen employed on the site, employer's agents and the public. Any damage or loss incurred due to the insufficiency of such protection must be made good by the Contractor. All protective devices are to be removed on completion of the works and any necessary making good consequent upon this is to be executed to the satisfaction of the Project Manager. The works shall be propped, strutted and supported as necessary before any alteration or demolition work commences. Prices shall include for all cleaning and preparatory work to structure and finishes and for making good to all finishes on completion whether or not specifically described. Unless described as set aside for re-use all arising debris and surplus materials shall be carefully removed from building and carted away from site. The Contractor shall be entirely responsible for any breakage or damage which may occur to materials required for re-use during their removal unless it is certified by the Project Manager that such damage or breakage was inevitable as a result of the condition of the item concerned, in case of need.</p>	
B.	<p><b><u>CLEARING AWAY</u></b></p> <p>The Contractor shall remove all temporary works, rubbish, debris and surplus materials from the site as they accumulate and upon completion of the works, remove and clear away all plant, equipment, rubbish, unused materials and stains and leave in a clean and tidy state to the reasonable satisfaction of the Project Manager. The whole of the works shall be delivered up clean, complete and in perfect condition in every respect to the satisfaction of the Project Manager.</p>	
C.	<p><b><u>CLAIMS</u></b></p> <p>It shall be a condition of this contract that upon it becoming reasonably apparent to the Contractor that he has incurred losses and / or expenses due to any of the contract conditions, or by any other reason whatsoever, he shall present such a claim or intent to claim notice to the PROJECT MANAGER within the contract period. No claim shall be entertained upon the expiry of the said contract period.</p>	
D.	<p><b><u>PAYMENTS</u></b></p> <p>The tenderer's attention is drawn to the fact that the GOVERNMENT DOES NOT MAKE ADVANCE PAYMENTS but pays for work done and materials delivered to site: all in accordance with Clause 23 of the Conditions of Contract Agreement. In order to facilitate this, a list of the general component elements for the works is given at the summary page of these specifications and the tenderer is requested to break down his tender sum commensurate to the said elements.</p>	
<i>Carried to collection</i>		

ITEM	DESCRIPTION	AMOUNT
A.	<p><b><u>PREVENTION OF ACCIDENT, DAMAGE OR LOSS</u></b></p> <p>The Contractor is notified that these works are to be carried out on a restricted site where the client is going on with other normal activities. The Contractor is thus instructed to take reasonable care in the execution of the works as to prevent accidents, damage or loss and disruption of activities being carried out by the Client. The Contractor shall allow in his rates any expense he deemed necessary by taking such care within the site.</p>	
B.	<p><b><u>WORKING CONDITIONS</u></b></p> <p>The Contractor shall allow in his rates for any interference that he may encounter in the course of the works for the Client may in some cases ask the Contractor not to proceed with the works until some activities within the site are completed, as the facility will be operating as usual during the course of the contract.</p>	
C.	<p><b><u>SIGNBOARD</u></b></p> <p>Incase of need provide erecting, maintaining throughout the course of the Contract and afterwards clearing away a signboard as designed, specified and approved by the Project Manager.</p>	
D.	<p><b><u>LABOUR CAMPS</u></b></p> <p>The Contractor shall not be allowed to house labour on site. Allow for transporting workers to and from the site during the tenure of the contract.</p>	
E.	<p><b><u>MATERIALS FROM DEMOLITIONS</u></b></p> <p>Any materials arising from demolitions and not re-used shall become the property of the client. The Contractor shall allow in his rates the cost of disposing the demolished materials as directed.</p>	
F.	<p><b><u>PRICING RATES</u></b></p> <p>The tenderer shall include for all costs in executing the whole of the works, including transport, replacing damaged items, fixing, all to comply with the said Conditions of Contract.</p>	
G.	<p><b><u>SECURITY</u></b></p> <p>The Contractor shall allow for providing adequate security for the works and the workers in the course of execution of this contract. No claim will be entertained from the Contractor for not maintaining adequate security for both the works and workers.</p>	
ITEM	<p><i>Carried to collection</i></p> <p>DESCRIPTION</p>	AMOUNT

**A. URGENCY OF THE WORKS**

The Contractor is notified that these "works are urgent" and should be completed within the period stated in these Particular Preliminaries (12 weeks). The Contractor shall allow in his rates for any costs he/she deems that he/she may incur by having to complete these works within the stipulated contract period without delays as per the contract period.

**B. PAYMENT FOR MATERIALS ON SITE**

All materials for incorporation in the works must be stored on site before payment is effected, unless specifically exempted by the Project Manager. This is to include materials of the Contractor, nominated sub-Contractors and nominated suppliers.

**C. EXISTING SERVICES**

Prior to the commencement of any work, the Contractor is to ascertain from the relevant authority the exact position, depth and level of all existing services in the area and he/she shall make whatever provisions may be required by the authorities concerned for the support, maintenance and protection of such services.

**D. TENDER DOCUMENTS**

Tender documents are as listed in Clause 2.1 of the Instruction to Tenderer's Page STD/9

**E. CONTRACT COMPLETION PERIOD**

The contract completion period in accordance with condition 31 of the Conditions of contract must be adhered to.

The 'PROJECT MANAGER' shall strictly monitor the Contractors progress in relation to the progress chart and should it be found necessary the 'PROJECT MANAGER' shall inform the Contractor in writing that his actual performance on site is not satisfactory. In all such cases the Contractor shall accelerate his rate of performance production and progress by all means such as additional labour, plant, etc. and working overtime all at his cost.

**F. PERFORMANCE BOND**

A bond of 5% of the contract sum will be required in accordance with clause 6.00 (as amended) on award of contract of the Instructions to Tenderer's. No payment on account for the works executed will be made to the contractor until he has submitted the Performance Bond to the Project Manager duly signed, sealed and stamped from an approved Bank

ITEM	DESCRIPTION	AMOUNT
	Carried to collection	

**A. DELIVERY OF TENDER**

Tenders and all documents in connection therewith, as specified above must be delivered in the addressed envelope which should be properly sealed and deposited at the offices as specified in the letter accompanying these documents or as indicated in the advertisement.

Tenders will be opened at the time specified in the letter accompanying these Tender Documents or as indicated in the advertisement. Tenders delivered/received later than the above time will not be opened.

**B. VALUE ADDED TAX**

The Contractor's attention is drawn to the Legal Notice in the Finance Act part 3 Section 21(b) operative from 1<sup>st</sup> September, 1993 which requires payment of VAT on all contracts. The Contractor should therefore include allowance in his rates and prices for prices for VAT and any other Government taxes currently in force.

The tenderer is advised that in accordance with Government public notice No. 35 & 36 Dated 11<sup>th</sup> September 2003 operational from 1<sup>st</sup> October 2003, VAT will be deducted against the contract sum at the prevailing rate by the Employer and remitted directly to the Commissioner of VAT through all interim certificates. It should however be noted that this is not additional tax but a new mode of payment for VAT, any excess payment will be refundable once the Contractor has submitted monthly returns to the Commissioner of VAT who will do the refunds when satisfied that the VAT regulations have been complied with.

NB: The Contractor should therefore include the tax within the rates.

**C. EXISTING BUILDING MATERIALS**

NOTE: Any materials found usable for the works shall be given to the contractor on credit with the approval of the client

ITEM	DESCRIPTION	AMOUNT
------	-------------	--------

**PARTICULARS OF INSERTIONS TO BE MADE IN APPENDIX TO CONTRACT AGREEMENT**

The following are the insertions to be made in the appendix to the Contract Agreement: -

<b>Period of Final Measurement</b>	<b>6 Months From Practical completion</b>
<b>Defects Liability Period</b>	<b>6 Months from Practical completion</b>
<b>Date for Possession</b>	<b>To be agreed with the Project Manager</b>
<b>Date for Completion.....</b>	<b>12 Weeks from date of Possession</b>
<b>Liquidated and Ascertained thereof:</b>	<b>At the rate of Kshs.. 5,000... per week or part thereof:</b>
<b>Prime cost sums for which .....</b>	<b>The Contractor desires to tender .....</b>
<b>Period of Interim Certificates</b>	<b>Monthly</b>
<b>Period of Honoring Certificates</b>	<b>30 days</b>
<b>Percentage of Certified Value Retained</b>	<b>10%</b>
<b>Limit of Retention Fund</b>	<b>10%</b>

*Carried to collection*  
DESCRIPTION

ITEM

AMOUNT