

**PROPOSED CONSTRUCTION OF 5NO.CLASSROOMS**

**AT**

**BONDE PRIMARY SCHOOL**

**IN**

**AWENDO CONSTITUENCY**

**MIGORI COUNTY**

**NATIONAL GOVERNMENT CONSTITUENCIES  
DEVELOPMENT FUND BOARD**  
- . - . - . - . - . - .  
... ..  
**CORPORATE SOCIAL RESPONSIBILITY  
PROGRAMME**

**NATIONAL GOVERNMENT CONSTITUENCIES  
DEVELOPMENT FUND BOARD**  
- . - . - . - . - . - .  
... ..  
**CORPORATE SOCIAL RESPONSIBILITY  
PROGRAMME**

ITEM NO	DESCRIPTION	QTY	UNIT	RATE	SHS
	<b><u>ENVIRONMENTAL CONSERVATION</u></b>				
A	The Contractor shall plant trees immediately the site is handed over as directed by County Works Officer and Head Teacher and water during contract period till well established	ITEM		SUM	20,000
	<b><u>SUBSTRUCTURE</u></b>				
	1.If site is sloping flatten site before construction commences and where possible Building should be along contours and not across same.				
	2. Substructure Walling should on average be 300mm above flattened ground.				
	<b><u>ALL PROVISIONAL</u></b>				
B	Clear site of bushes, grass and debris and cart away and burn	522	SM		
C	Excavate oversite 150mm deep to remove vegetable soil and cart away and deposit as directed	522	SM		
D	Excavate to reduce levels commencing from stripped ground level	0	CM		
E	Excavate for trench not exceeding 1.50 metres deep from stripped ground	110	CM		
F	Extra over for excavation in rock of any class	0	CM		
G	Cart away excavated material and deposit in council approved dump	57	CM		
H	Return, fill and ram selected material to back of foundations	53	CM		
I	Allow for planking and strutting to uphold sides of excavations	ITEM		SUM	
J	Allow for keeping excations free from general water including spring water by pumbing or otherwise	ITEM		SUM	
K	Hardcore fill in making up levels and compacted in layers of 150 mm and overall thickness 300 mm	438	SM		
	Carried to Collection	1			

**NATIONAL GOVERNMENT CONSTITUENCIES  
 DEVELOPMENT FUND BOARD**  
 .....  
 .....  
**CORPORATE SOCIAL RESPONSIBILITY  
 PROGRAMME**

ITEM NO	DESCRIPTION	QTY	UNIT	RATE	SHS
A	Treat surface of stripped ground with chloropyrif or antitermite treatment applied in accordance with the manufacturer' printed instructions	462	SM		
B	Murram blinding laid on hardcore( ms)	438	SM		
C	Gauge 500 damp proof membrane	462	SM		
	<u>Concrete Work</u>				
	<u>Plain Concrete Class mix (1:4:8) in:</u>				
D	50 mm Thick blinding under column bases and strip foundations	85	SM		
	<u>Vibrated Reinforced concrete mix (1:2:4) in:-</u>				
E	Strip foundations	17	CM		
F	100 mm Thick floor bed	462	SM		
G	100 Ditto ramp 1200 mm wide and 3000 mm long including 20mm thick cement and sand screed (1:3) with grooves in approved pattern	5	NO		
H	Concrete site step size 1200x500 mm ,200 mm step and 165 mm high	8	LM		
	Carried to Collection				
	2				

NATIONAL GOVERNMENT CONSTITUENCIES  
 DEVELOPMENT FUND BOARD  
 -----  
 CORPORATE SOCIAL RESPONSIBILITY  
 PROGRAMME

CORPORATE SOCIAL RESPONSIBILITY  
 PROGRAMME

ITEM NO	DESCRIPTION	QTY	UNIT	RATE	SHS
A	50 mm Thick precast concrete paving slabs (1:2:4) with joints in cement mortar (1:4) pointed and laid on murrum and hardcore bed including excavating 150 mm deep	71	SM		
	<u>REINFORCEMENT</u>				
	<u>Supply and fix the following high tensile ribbed round steel bars to B.S. 4461 including binding wires, spacer blocks ,cutting and bending</u>				
B	10 mm Diameter bars	350	KG		
C	8mm Ditto	167	KG		
D	BRC Fabric REF. A142 weighing 2.20 KGS per square metres including side and end laps, stools and binding wire	462	SM		
	Carried to collection				

3

**NATIONAL GOVERNMENT CONSTITUENCIES  
 DEVELOPMENT FUND BOARD**  
 -----  
**CORPORATE SOCIAL RESPONSIBILITY  
 PROGRAMME**

ITEM NO	DESCRIPTION	QTY	UNIT	RATE	SHS
	<b><u>Sawn Formwork to:-</u></b>				
A	Sides of foundations	56	SM		
B	Edge of bed 75- 150 mm high	119	LM		
C	Edge of riser 150 - 225 mm high	8	LM		
	<b><u>WALLING</u></b>				
D	200 mm Thick natural stone walling to 14 N/mm <sup>2</sup> crushing strength joint in cement and sand mortar (1:4) and reinforced with 25x20 mm hoop iron at alternate courses	178	SM		
E	200X400 mm Piers	40	LM		
	<b><u>PLINTHS</u></b>				
F	12 mm Thick cement and sand (1:4) render to plinth woodfloat finished	36	SM		
G	Prepare and apply three coats bitumastic paint to rendered plinth	36	SM		
	Carried to collection				
	4				

NATIONAL GOVERNMENT CONSTITUENCIES  
 DEVELOPMENT FUND BOARD  
 .....  
 .....  
 CORPORATE SOCIAL RESPONSIBILITY  
 PROGRAMME

ITEM NO	DESCRIPTION	QTY	UNIT	RATE	SHS
	<u>COLLECTION</u>				
	From page 1				
"	" 2				
"	" 3				
"	" 4				
	TOTAL FOR SUBSTRUCTURE CARRIED TO MAIN SUMMARY				
	<div data-bbox="486 1317 954 1608" data-label="Text"> <p>NATIONAL GOVERNMENT CONSTITUENCIES DEVELOPMENT FUND BOARD</p> <p>.....</p> <p>....</p> <p>CORPORATE SOCIAL RESPONSIBILITY PROGRAMME</p> </div>				

5

NATIONAL GOVERNMENT CONSTITUENCIES  
DEVELOPMENT FUND BOARD

.....

....

CORPORATE SOCIAL RESPONSIBILITY  
PROGRAMME

ITEM NO	DESCRIPTION	QTY	UNIT	RATE	SHS
	<b><u>REINFORCED CONCRETE SUPERSTRUCTURE</u></b>				
	<u>Vibrated Reinforced Concrete mix class 25/20 with crushing strength of 25N/mm<sup>2</sup></u>				
A	Ring Beams	9	CM		
	<b><u>REINFORCEMENT</u></b>				
	<u>Supply and fix the following high tensile ribbed steel bars as before :</u>				
B	12 mm Diameter bars	506	KG		
C	8 mm Ditto	255	KG		
	Carried to collection				
	6				

NATIONAL GOVERNMENT CONSTITUENCIES  
 DEVELOPMENT FUND BOARD  
 . . . . .  
 . . . . .  
 . . . . .  
 CORPORATE SOCIAL RESPONSIBILITY  
 PROGRAMME

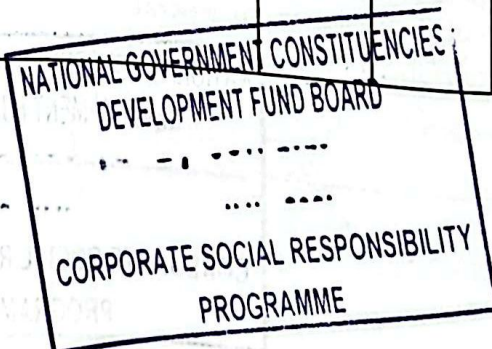
ITEM NO	DESCRIPTION	QTY	UNIT	RATE	SHS
	<u>Sawn formwork to:-</u>				
A	Sides and soffits of beams	114	SM		
	<u>MILD STEEL</u>				
B	75mm Diameter hollow section tubular pillar 2800 mm high with 100x100 x3 mm base plate welded on with 4NO. 12 mm diameter anchor bolts with nut and washers and form holes in base plate	16	NO		
	<u>Painting and Decorating</u>				
C	Prepare and apply one undercoat and two coats gloss oil paint to general surfaces of metal	45	LM		
	<u>SUNDRY</u>				
	<u>WELD ON</u>				
D	100X50 x2mm Plate with 4NO.10 mm bolts 150 mm long with nut and washers and form holes in mild steel and timber	16	NO		
	<u>Second grade celcured Cypress:</u>				
E	100X50 mm Wall plate to steel pillars (MS)	50	LM		
	Carried to collection				
	<u>COLLECTION</u>				
	From page 6				
	" Above				
	TOTAL FOR REINFORCED CONCRETE SUPERSTRUCTURE CARRIED TO MAIN SUMMARY				

NATIONAL GOVERNMENT CONSTITUENCIES  
DEVELOPMENT FUND BOARD

7

CORPORATE SOCIAL RESPONSIBILITY  
PROGRAMME

ITEM NO	DESCRIPTION	QTY	UNIT	RATE	SHS
<b><u>WALLING</u></b>					
<b><u>EXTERNAL WALLING</u></b>					
<u>Natural stone machine cut , with crushing strength of 14.00 N/MM2 bedded in cement and sand (1:4) mortar joints reinforced with hoop as before:</u>					
A	200 mm Thick walls	240	SM		
B	200mm Ditto in gables	25	SM		
C	200x400 mm Piers	86	LM		
D	200 mm Wide damp proof course laid in cement and sand (1:4) bed	114	LM		
E	Extra over medium chisel dressed walling for neatly recessed horizontal joints	240	SM		
<b><u>INTERNAL WALLING</u></b>					
F	200 mm Thick machine cut stone in cement and sand mortar joints (1:4)	76	SM		
G	150X200 mm Precast concrete permanent vents with mosquito gauze wire build in walling	40	PR		
H	200 mm Wide damp proof as before described	28	LM		
<b><u>Sundry</u></b>					
I	Raking cutting on 200 mm thick walls	40	LM		
J	Eaves filling on 200mm thick walling and 300mm average height	90	LM		
TOTAL FOR WALLING CARRIED TO MAIN SUMMARY					



ITEM NO	DESCRIPTION	QTY	UNIT	RATE	SHS
	<b><u>ROOFING</u></b>				
	<b><u>ROOF CONSTRUCTION</u></b>				
	<b><u>TIMBER TRUSSES</u></b>				
	<u>Fabricate, bolt and hoist the following 26NO.Trusses, span 8.20 metres and hoist and fix 3.00 metre above ground:</u>				
	<u>Second grade celcured cypress:</u>				
A	100x50 mm Rafters	330	LM		
B	150x50 Ceiling joists/tie beams	267	LM		
C	100x50 Struts and ties	330	LM		
D	100X50 mm King post	97	LM		
	<u>Sundry</u>				
E	12 mm Diameter rawl bolts 200 mm long with washers	51	NO		
	<u>END OF TRUSSES</u>				
	<u>General Construction</u>				
F	100X50 mm Wall plate	100	LM		
I	75X50 mm Purlins	610	LM		
	<u>ROOF COVERING</u>				
J	Pre-painted gauge 28 galvanised corrugated roofing sheets with side and end laps including brass 'J' bolts with plastic caps to suppliers's specification	578	SM		
K	Ridge and hip cap in matching sheet	51	LM		
	<u>Wrot Cypress</u>				
L	200X25 mm Fascia and Barge board	124	LM		
	<u>Painting and Decorating</u>				
M	Prepare and apply one under coat and three finishing coats of gloss oil paint to general surfaces of wood work 200 to 300 mm girth	124	LM		
	Carrie to Collection				
	9				

NATIONAL GOVERNMENT CONSTITUENCIES  
DEVELOPMENT FUND BOARD

CORPORATE SOCIAL RESPONSIBILITY  
PROGRAMME

ITEM NO	DESCRIPTION	QTY	UNIT	RATE	SHS
	<u>Rainwater Goods</u>				
A	100 mm Diameter half round plastic eaves gutters supported with brackets at 1000 mm centres	102	LM		
B	Extra over for 600 mm long swanneck	4	NO		
C	Ditto stopped ends	4	NO		
D	Ditto outlets	4	NO		
E	Ditto bends	4	NO		
F	75 mm Diameter down pipe held with pipe clips to walling	12	LM		
G	Extra over for offset	4	NO		
	Carried to Collection				
	<u>COLLECTION</u>				
	From Page 9				
	" " 10				
	TOTAL FOR ROOF CARRIED TO MAIN SUMMARY				
	10				

NATIONAL GOVERNMENT CONSTITUENCIES  
 DEVELOPMENT FUND BOARD  
 -----  
 ....  
 CORPORATE SOCIAL RESPONSIBILITY  
 PROGRAMME

ITEM NO	DESCRIPTION	QTY	UNIT	RATE	SHS
	<b><u>DOORS</u></b>				
	<u>Mild Steel</u>				
	<u>Fabricate, weld, supply and fix steel doors comprising gauge 16 cover plate in boxes, heavy gauge sections with weld joints ground smooth, apply red oxide primer before delivery including lugs built - in walling to Architect's approval:-</u>				
A	Double Steel door size 1200x2100 mm, leaf size 600x2100 mm, consisting 38x38 x 2 mm angle frame, 25x25mm hollow section tube internal framing including necessary ironmongery with 3NO. 25mm Heavy duty hinges, box profile panel 300x450mm	5	NO		
	<u>Glazing</u>				
B	4mm Thick clear sheet glass in panes 0.10 to 0.50 Square metres and glazing metal with linseed putty	5	SM		
	Carried to Collection				
	11				

NATIONAL GOVERNMENT CONSTITUENCIES  
 DEVELOPMENT FUND BOARD  
 -----  
 CORPORATE SOCIAL RESPONSIBILITY  
 PROGRAMME

ITEM NO	DESCRIPTION	QTY	UNIT	RATE	SHS
	<u>Ironmongery</u>				
A	Two lever mortice lock and furniture including matching screws as Union	0	NO		
B	Heavy duty bush hinges	10	NO		
C	Rubber stops	10	NO		
	<u>Painting and Decorating</u>				
	<u>Externally</u>				
D	Prepare and apply three coats of gloss oil paint from Crown Berger or Dura Coat to general surfaces of meta	13	SM		
	<u>Internally</u>				
E	Prepare and apply three coats as before	13	SM		
	Carried to Collection				
	<u>COLLECTION</u>				
	From Page 11				
	" " 12				
	TOTAL FOR DOORS CARRIED TO MAIN SUMMARY				

NATIONAL GOVERNMENT CONSTITUENCIES  
DEVELOPMENT FUND BOARD  
12

CORPORATE SOCIAL RESPONSIBILITY  
PROGRAMME

ITEM NO	DESCRIPTION	QTY	UNIT	RATE	SHS
	<b><u>WINDOWS</u></b>				
	<b><u>Mild Steel</u></b>				
	<u>Fabricate, Supply and fix including ground smooth weld joints with 'I' sections and 25x25 mm 'Z' sections prepare and apply red oxide primer before delivery including brass window stays and fasteners to Architect's approval:</u>				
A	Composite window size 1800x1500 mm consisting of 2NO. opening lights size 600x1500mm , 1NO. fixed light and ventlight	15	NO		
B	Ditto 1800x900 mm Ditto, 2NO. Opening lights, 1NO. fixed light and ventlight	10	NO		
	<b><u>Glazing</u></b>				
C	4mm Thick clear glass in panes 0.10 to 0.50 square metres and glazing metal with linseed oil putty	57	SM		
	<b><u>Precast Concrete</u></b>				
D	265X75 mm Window cill in concrete ( 1:2:4) including moulds, throating, top weathered and hoist and fix in position	48	LM		
	Carried to Collection				

NATIONAL GOVERNMENT CONSTITUENCIES  
 DEVELOPMENT FUND BOARD  
 .....  
 .....  
 CORPORATE SOCIAL RESPONSIBILITY  
 PROGRAMME

ITEM NO	DESCRIPTION	QTY	UNIT	RATE	SHS
	<u>Painting and Decorating</u>				
	<u>Internally</u>				
A	Prepare and apply one under coat and three coats of gloss oil paint from Crown Berger or Dura Coat to general surfaces of metal	57	SM		
	<u>Externally</u>				
B	Ditto Surfaces of metal	57	SM		
	Carried to Collection				
	<u>COLLECTION</u>				
	From Page 13				
	" " 14				
	<div style="border: 1px solid black; padding: 5px; margin: 0 auto; width: fit-content;"> <p>NATIONAL GOVERNMENT CONSTITUENCIES DEVELOPMENT FUND BOARD</p> <p style="text-align: center;">.....</p> <p style="text-align: center;">....</p> <p>CORPORATE SOCIAL RESPONSIBILITY</p> </div>				
	TOTAL FOR WINDOWS CARRIED TO SUMMARY				

14

NATIONAL GOVERNMENT CONSTITUENCIES  
DEVELOPMENT FUND BOARD

.....

....

CORPORATE SOCIAL RESPONSIBILITY

PROGRAMME SUMMARY

ITEM NO	DESCRIPTION	QTY	UNIT	RATE	SHS
<b><u>FINISHES</u></b>					
<b><u>EXTERNAL FINISHES</u></b>					
A	12 mm Thick cement and sand (1:4) rendering to concrete surfaces and gables woodfloat finished	59	SM		
B	12 mm Ditto to walls and reveals	14	SM		
<b><u>Painting and Decorating</u></b>					
C	Prepare and apply three coats plastic emulsion paint from Crown Berger or Dura Coat to plastered surfaces	73	SM		
<b><u>Internal Wall Finishes</u></b>					
D	12 mm Thick plaster plus cement and sand (1:4) steel float finished	435	SM		
<b><u>Painting and Decorating</u></b>					
E	Prepare and apply three coats plastic emulsion vinyl silk cream paint from Crown Berger or Dura Coat to plastered surfaces	435	SM		
F	Extra over plastering for black board and prepare and apply three coats of bitumastic paint ditto	40	SM		
	Carried to Collection				


15

NATIONAL GOVERNMENT CONSTITUENCIES  
 DEVELOPMENT FUND BOARD  
 .....  
 .....  
 CORPORATE SOCIAL RESPONSIBILITY  
 PROGRAMME

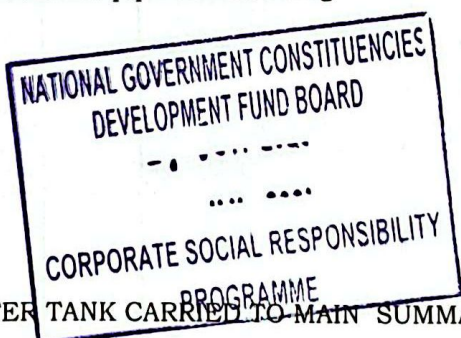


ITEM NO		QTY	UNIT	RATE	SHS
	<u>Floor Finishes</u>				
A	20 mm Thick cement and sand ( 1:3 ) floor screed wood float finished to receive Tiles (M.S)	428	SM		
	<u>CERAMIC TILES</u>				
B	10 mm Thick ceramic tiles in flooring size 300x300mm laid with cement grout and joints pointed with white cement to Architect's approval	428	SM		
C	10 mm Ditto and 100 mm high skirting	207	LM		
	<u>Ceiling</u>				
D	12 mm Thick chip board ceiling fixed in symetrical pattern	428	SM		
E	Extra over ceiling for 600x600 mm trap door with 75x25 mm cornice all round and framing	5	NO		
F	75X25 mm Cornice with moulding	219	LM		
	<u>Second grade celcured cypress</u>				
G	50X50 mm Branderings	1577	LM		
H	50X50 mm Branderings but plugged	0	LM		
	<u>Painting and Decorating</u>				
I	Prepare and apply three coats of plastic emulsion paint to general surfaces of soft board (Brilliant white)	428	SM		
J	General surfaces to 100 mm girth	219	LM		
	Carried to Collection				

**NATIONAL GOVERNMENT CONSTITUENCIES  
 DEVELOPMENT FUND BOARD**  
 16  
**CORPORATE SOCIAL RESPONSIBILITY  
 PROGRAMME**





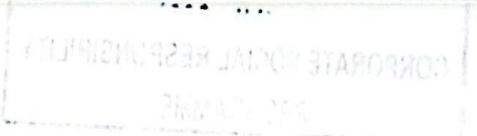
ITEM NO	DESCRIPTION	QTY	UNIT	RATE	SHS
<b><u>FIXTURES</u></b>					
<u>The following in 4NO.White Board size 2000x1500 mm</u>					
A	Supply and mount white board to walling complete with chalk and dust holder all in accordance with specifications from SEPU	4	NO		
<u>The following in 5NO.Notice Board size 2400x1200 mm</u>					
B	12 mm Thick soft board	15	SM		
C	50X25 mm Wrot Cypress moulded framing plugged	45	LM		
<u>Painting and Decorating</u>					
D	Prepare and apply one under coat and three coats of brilliant white emulsion paint to general surfaces of soft board	15	SM		
E	Prepare and apply one under coat and three coat of gloss oil paint to general surfaces of wood work to 100 mm girth	45	LM		
					
Carried to Collection					
18					



ITEM NO	DESCRIPTION	QTY	UNIT	RATE	SHS
<b><u>WATER STORAGE TANK</u></b>					
A	Excavate over site as before	3	SM		
B	Excavate foundation trench ditto	2	CM		
C	150 mm Thick concrete block walling as before	3	SM		
D	Mass concrete (1:3:6) in foundations	1	CM		
E	450 mm Thick hardcore as before	3	SM		
F	50 mm Thick murram as before	3	SM		
G	100 mm Thick concrete (1:3:6) in slap	3	SM		
H	20 mm Thick cement and sand screed (1:3) as before	4	SM		
I	BRC REF A142 Fbric mesh as before	3	SM		
J	Supply and install cold water storage plastic water 10000 Litre capacity from Kentank or other equal and approved, Heavy duty (3 Ply)	1	NO		
K	12 mm Diameter pegler tap	1	NO		
L	19 mm Ditto union	1	NO		
M	32 mm Diameter overflow pipe 400 mm long	1	NO		
 TOTAL FOR WATER TANK CARRIED TO MAIN SUMMARY					
 20					
 CORPORATE SOCIAL RESPONSIBILITY PROGRAMME					

ITEM NO	DESCRIPTION	QTY	UNIT	RATE	SHS
<b>ELECTRICAL INSTALLATION</b>					
<u>ELECTRICAL WORKS TO BE EXECUTED BY SPECIALIST REGISTERED BY KPL</u>					
<u>Supply , install , test and commission the following:</u>					
A	Lighting points wired in 3x1.5mm <sup>2</sup> SC PVC CU cables drawn in 20mm dia HG PVC conduits with all necessary accessories excluding switches and fittings for one way switching	50	NO		
B	10A moulded ivory switch plate as crabtree or approved equivalent as follows: i. Two way one gang	5	NO		
	ii. Three way one gang	1	NO		
C	Lighting fittings complete with fixing accessories and lamps as follows: i). 1200mm lx 36w florescent batten fitting or slim cross section with clip on cover plate and adjustable end cap system as Thorn Popular Pack batten or approved equivalent	50	NO		
D	ii) Bulkhead fitting with aluminium body on Thorn or approved equivalent with Energy saving bulb	15	NO		
E	Socket outlets Power outlets i. Comprising of wiring in 3x2.5mm <sup>2</sup> PVC SC CU in concealed HG conduits	10	NO		
	ii. 13A 2gang switched moulded socket outlet as crabtree or approved equivalent	5	NO		
	Consumer Units and Distribution Boards				
F	4-Way SP/N consumer unit flush mounted on wall complete with a 10A SP/N integral isolator as crabtree or approved equivalent	1	NO		
G	Single Pole miniature circuit breaker as follows: i. 5ASP	1	NO		
	ii. 30asp	2	NO		
	iii. Blanking covers	1	NO		
	Carried to Collection	21			

**NATIONAL GOVERNMENT CONSTITUENCIES  
 DEVELOPMENT FUND BOARD**  
 - . . . . .  
 . . . . .  
**CORPORATE SOCIAL RESPONSIBILITY  
 PROGRAMME**

ITEM NO	DESCRIPTION	QTY	UNIT	RATE	SHS
A	Sub-mains Cables 3x6.0mm <sup>2</sup> SCPVC CU cables drawn in HG conduit	10	LM		
B	Standard cable looping box complete with single cut out fuse neutral link	1	NO		
C	Electrical earthing comprising of 6.0mm <sup>2</sup> SC PVC CU cable drawn in HG conduits 1500mm times 15mm copper electrodes c/w clamps pre-cast concrete inspection pit with cover	ITEM		SUM	
D	Testing and commissioning	ITEM		SUM	
E	Allow for supply and fixing Copper Lighting arrestors, w with copper wire earthing and spikes at top	1	NO		
	Carried to Collection				
	<u>COLLECTION</u>				
	From Page 21				
	" " 22				
					
					
<b>TOTAL FOR ELECTRICAL INSTALLATION CARRIED TO SUMMARY</b> ..... 22 .....					
					

ITEM NO	DESCRIPTION	QTY	UNIT	RATE	SHS
	<b>PRIME COST AND PROVISIONAL SUMS</b> <u>EXPENDITURE FOR ITEMS HERE BELOW SHALL BE APPROVED BY NG-CDF BOARD</u> <u>The following sums shall be expended upon Architect's instructions and may be omitted in whole:</u>				
A	Allow for a Provisional Sum of Kenya Shillings Two Hundred Thousand ( Kshs.200,000/) for Contingency	ITEM		SUM	200,000
B	Allow for a Prime Cost Sum of Kenya Shillings Fifty Thousand ( Kshs.50,000/) for Supply and Delivery of 9KG and 2NO. Water base and 9 Litre X2NO. Carbon dioxide Fire extinguishers mounted on walling to approval	ITEM		SUM	50,000
C	Allow for Branding of Project in accordance with NG-CDF Board Specifications	ITEM		SUM	50,000
	<u>FURNITURE</u>  <u>Wrot Cypress</u> Mild Steel tubular framing 25mm diameter heavy duty to Desk Lockers The Desks Locker shall be in 12mm thick cypress timber and polished with clear wood varnish. Teachers' Tables shall be 20 thick MDF 25x25 mm Tubular mild steel framing with 4NO.legs. Teachers' Chairs shall be in 9 mm thick plywood on 25mm tubular framing and 4NO.legs				
D	Allow for a Provisional Sum of Kenya Shillings (Kshs 1,387,500.00) for Fabrication and Supply of 225NO Desk Lockers 750mm long and 450mm deep ,3NO.Teachers'Tables and 3NO.Chairs to be supplied by an approved Supplier with specifications from County Works Officer and Head Teacher including 225NO.Chairs.	ITEM		SUM	1,387,500
E	Allow for Transport to site	ITEM		10%	138,750
	<b>TOTAL FOR PRIME COST AND PROVISIONAL SUMS CARRIED TO MAIN SUMMARY</b>				

NATIONAL GOVERNMENT CONSTITUENCIES  
 DEVELOPMENT FUND BOARD  
 - . . . . .  
 . . . . .  
 CORPORATE SOCIAL RESPONSIBILITY  
 PROGRAMME

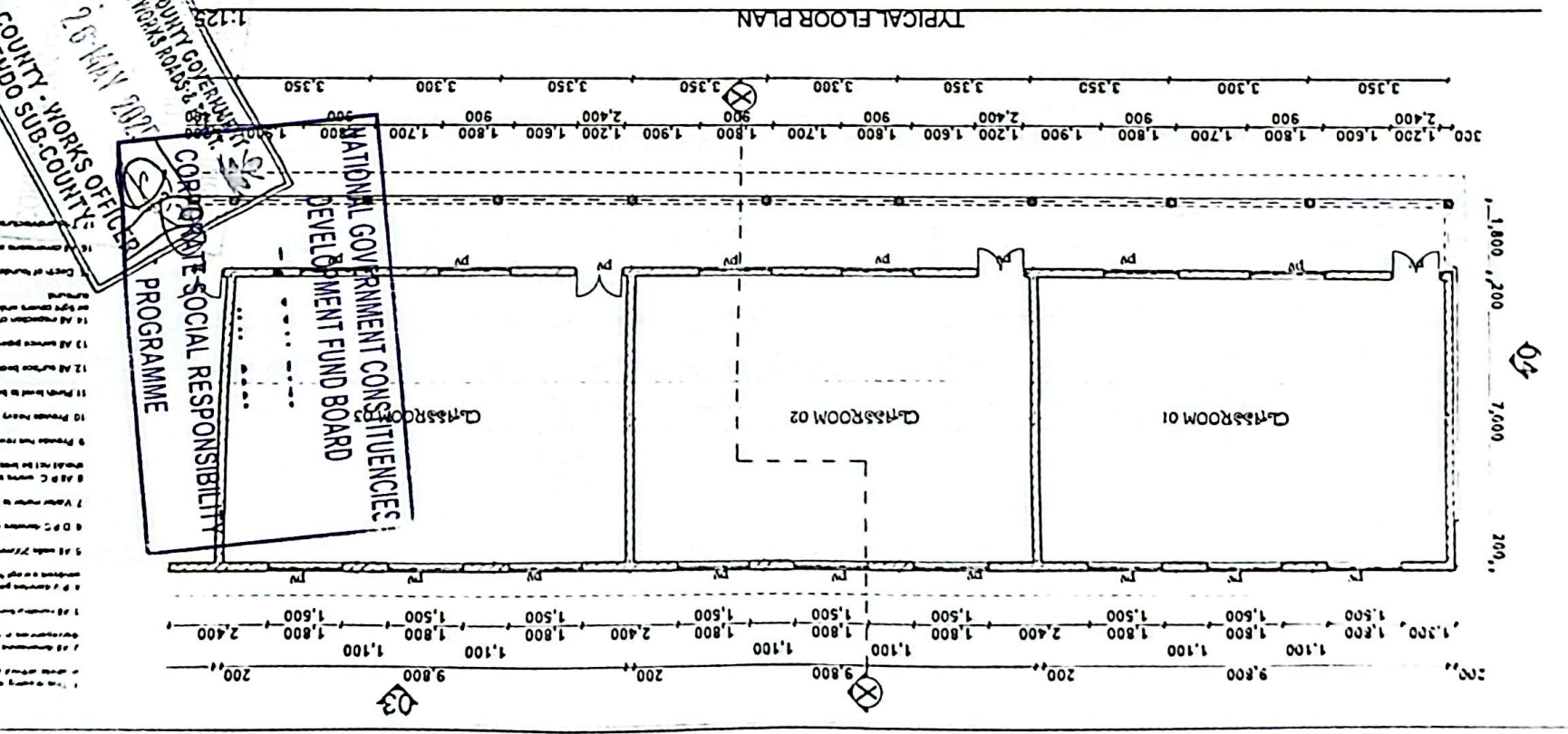
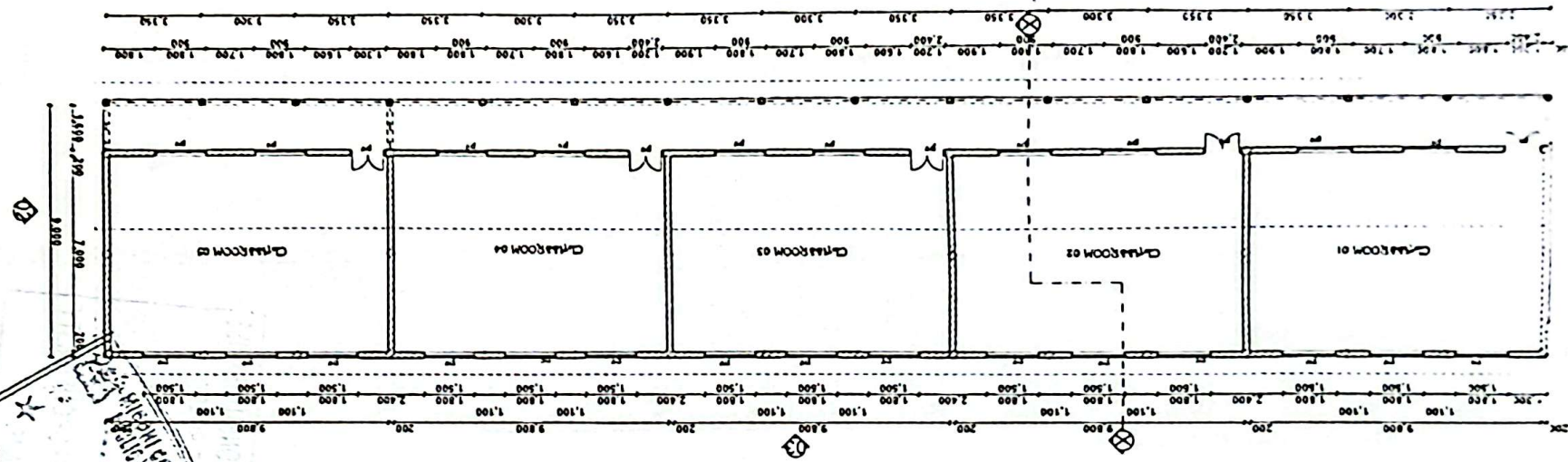
ITEM NO	DESCRIPTION	SHS
<b>PROPOSED CONSTRUCTION OF 5NO.CLASSROOMS</b>		
<u>MAIN SUMMARY</u>		
A	SUBSTRUCTURE - PAGE 5	
B	REINFORCED CONCRETE SUPERSTRUCTURE -PAGE 7	
C	WALLING -PAGE 8	
D	ROOFING - PAGE 10	
E	DOORS - PAGE 12	
F	WINDOWS - PAGE 14	
G	FINISHES - PAGE 17	
H	FIXTURES -PAGE 18	
I	WATER TANK - PAGE 20	
J	ELECTRICAL INSTALLATION -PAGE 22	
K	PRIME COST AND PROVISIONAL SUMS - PAGE 23	
L	PRELIMINARIES (Water for Works, Hoarding, Etc)	
SUB-TOTAL		
ADD VAT 16%		
TOTAL COST OF 5NO.CLASSROOMS CARRIED TO FORM OF TENDER		

NATIONAL GOVERNMENT CONSTITUENCIES  
 DEVELOPMENT FUND BOARD  
 .....  
 .....  
 CORPORATE SOCIAL RESPONSIBILITY  
 PROGRAMME

1:175  
 BOND/Tuition/2025.05.001  
 Drawing Name  
 Drawing Type  
 ARCHITECTURAL  
 FLOOR PLAN  
 TUTION BLOCK  
 PROPOSED 5-CLASSROOM  
 Project

Ministry of Public Works  
 BONDE PRIMARY SCHOOL  
 P.O. BOX  
 AVENIDO SUB-COUNTY - WORKS OFFICE  
 BUNGARE

1. This drawing is a preliminary drawing and should not be used for construction purposes.  
 2. All dimensions are in millimeters unless otherwise stated.  
 3. The architect reserves the right to make changes to this drawing without notice.  
 4. The client is responsible for obtaining all necessary permits and approvals.  
 5. The architect is not responsible for any errors or omissions in this drawing.  
 6. The architect is not responsible for any construction defects or delays.  
 7. The architect is not responsible for any environmental impact or sustainability issues.  
 8. The architect is not responsible for any social or economic issues.  
 9. The architect is not responsible for any cultural or heritage issues.  
 10. The architect is not responsible for any safety or security issues.  
 11. The architect is not responsible for any health or safety issues.  
 12. The architect is not responsible for any accessibility issues.  
 13. All services are to be provided in accordance with the relevant standards and specifications.  
 14. All materials and workmanship are to be of the highest quality and in accordance with the relevant standards and specifications.  
 15. The architect is not responsible for any construction defects or delays.



**NATIONAL GOVERNMENT CONSTITUENCIES DEVELOPMENT FUND BOARD**  
**CORPORATE SOCIAL RESPONSIBILITY PROGRAMME**  
 26 MAY 2007  
 BUNGARE

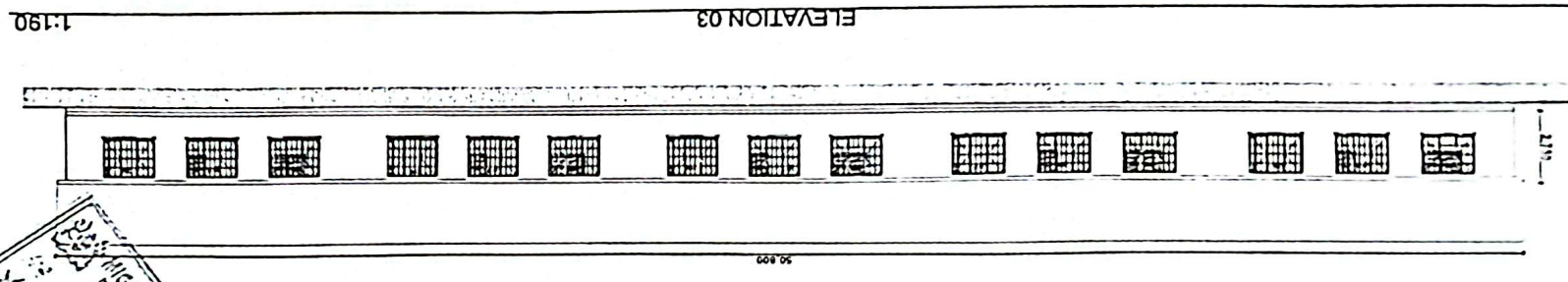
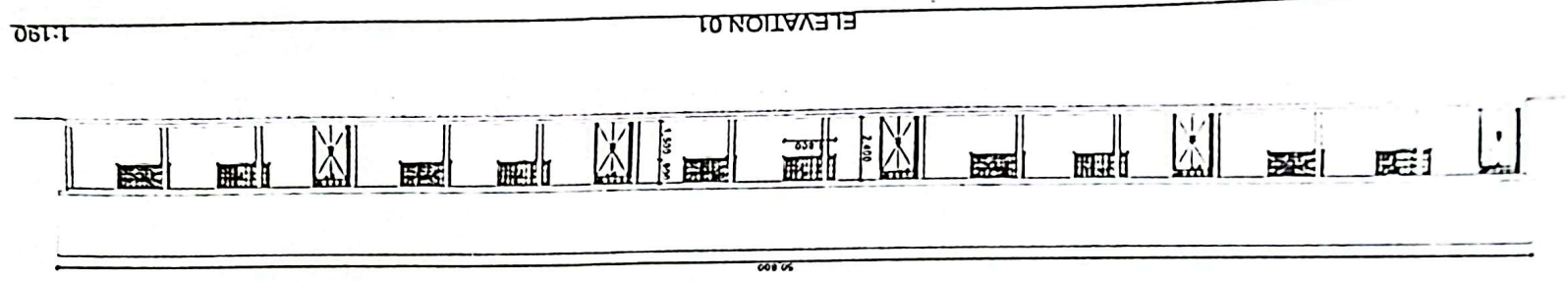
GENERAL FLOOR PLAN

1:1000, 2000, 7000, 2000

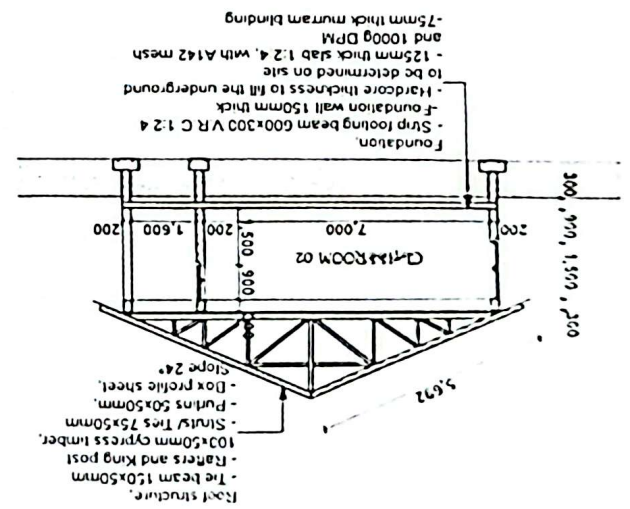
1:800, 200, 7,000, 200



Ministry of Public Works  
 Client: BONDE PRIMARY SCHOOL  
 P.O BOX SARE  
 Project: PROPOSED 5-CLASSROOM TUITION BLOCK  
 Drawing Name: ELEVATIONS  
 Drawing Type: ARCHITECTURAL  
 Scale: 1:100  
 Date: 2025-05-02  
 A3



SECTION X-X 1:140



NATIONAL GOVERNMENT CONSTITUENCIES  
 DEVELOPMENT FUND BOARD  
 CORPUS CHRISTI SOCIAL RESPONSIBILITY  
 PROGRAMME  
 SUB-COUNTY - WORKS OFFICER  
 AWENDO SUB-COUNTY  
 26 MAY 2025  
 NIGORI COUNTY GOVERNMENT  
 PUBLIC WORKS ROADS TRUST