



**NG-CDF BOARD**

# NEWSLETTER

**JANUARY - MARCH 2026 ISSUE**

**QUARTER THREE**

**Landmark Victory for  
Grassroots Development:**

## **COURT OF APPEAL UPHOLDS NG-CDF ACT**



**Maendeleo  
kwa wote**

The National Government Constituencies Development Fund (NG-CDF) is a decentralised fund established by the Government to promote socio-economic development at the grassroots level and address regional inequality throughout the country.





***“A Quarter  
Marked  
by Justice,  
Impact, and  
the Power of  
Community”***

**EDITOR'S NOTE**

**T**his quarter will be remembered as a defining chapter in Kenya's journey toward equitable, people centred development. At a time when communities continue to rely on grassroots investments to drive transformation, the Court of Appeal delivered a historic judgment that reaffirmed a truth long championed across the nation: **development belongs to the people, and its heartbeat lies in the constituencies.**

The landmark ruling on the National Government Constituencies Development Fund (NG CDF) did more than settle a legal debate, it restored confidence, protected essential services, and safeguarded the future of millions of learners. By affirming the constitutional place of NG CDF, the Court ensured that classrooms will continue to rise, bursaries will reach deserving students, and community infrastructure will remain a powerful force for local empowerment.

But this quarter was not only about a legal victory. It was about **what that victory protects:** real stories of progress, dignity, and hope.

We witnessed how Innovation Hubs continued to transform youth livelihoods, equipping young people with digital skills, opening doors to online work, and fuelling a vibrant creative economy. This is rooted in the BETA vision, where digital superhighway drives opportunity and Creative Economy unlocks talent.

In Langata, community voices delivered a modern dormitory where girls once slept in overcrowded classrooms. In Githunguri, a central kitchen born from public participation now feeds 26,000 learners daily, easing family burdens and keeping children in school.

From Kitui to Wundanyi, Awendo to Masinga, Machakos to Mavoko, new classrooms, sanitation blocks, security facilities, school buses, and boarding spaces showed what real development looks like, practical solutions that uplift learning, restore dignity, and strengthen communities.

This quarter proved that NG CDF invests not just in structures, but in people; not just in projects, but in possibilities; not just in access, but in dignity. When justice aligns with community needs and leadership remains people focused, progress becomes unstoppable.

*Frenda*







# LANDMARK VICTORY FOR GRASSROOTS DEVELOPMENT: COURT OF APPEAL UPHOLDS NG-CDF ACT

In a historic turning point for decentralized development, the **Court of Appeal at Nairobi on February 6, 2026 delivered a decisive judgment**, solidifying the legal standing of the National Government Constituencies Development Fund (NG-CDF).

The judgment, delivered by a three-judge bench consisting of Justices Musinga (P), Tuiyott and

Muchelule, **overturned a previous High Court decision** of 20th September 2024 that had invalidated the entire NG-CDF ACT, 2015.

## **The Legal “Clean Bill of Health”**

The Court of Appeal’s judgment comprehensively addressed several constitutional concerns that had long clouded the Fund’s operations. Key highlights included:

- **Respect for Devolution:** The Court found that the NG-CDF Act, 2015 does **not violate the principles of devolution**. It clarified that the national government is constitutionally entitled to decentralize its services to the constituency level without infringing on the functions of county governments.
- **Prudent Public Finance:** The Court rejected claims that the Fund fosters wastage, noting that the Act includes multiple layers of fiscal oversight, including mandatory audits by the Auditor-General.
- **Powers and Functions of Counties:** The Court observed that the architecture of the NG-CDF Act is such that it does not encroach on functions reserved for Counties nor does it upset inherent powers bestowed upon Counties.
- **Senate Involvement:** The judges ruled that because the Fund is strictly limited to national government functions, the involvement of the Senate was not required for its enactment.
- **Separation of Powers:** Except for one specific provision (Section 43(9)), the Court ruled that the Act does not violate the doctrine of separation of powers. The Court determined that parliamentary approval of Board members is a legitimate check on executive power rather than an interference in management.
- **The Principle of Severability**  
While upholding the Act as a whole, the Court demonstrated its precision by severing only Section 43(9). This section previously seemed to tie the

tenure of Fund Account Managers to the term of Parliament; the Court ruled this specific link unconstitutional to ensure the managers' independence from political cycles.

## What This Means for Constituencies

This legal triumph guarantees the uninterrupted flow of resources to vital National Government projects. Under the current framework, the Fund is allocated **no less than 2.5% of the national government's share of revenue**. This victory safeguards:

- **Education for All:** The continued allocation of approximately Ksh 15 billion annually toward bursaries, which support an average of 1.2 million needy learners every year.
- **Infrastructure Growth:** The ongoing development of schools supported by the Fund since 2003, which have provided learning capacity for over 880,000 students.
- **Security and Innovation:** Sustained funding for police facilities and the rollout of Constituency Innovation Hubs aimed at boosting youth employment.

While the matter has been progressed to the Supreme Court by the petitioners opposed to the Fund, we are confident that the Apex court will consider the issues with finality. Indeed, the anticipated outcome will reaffirm that NG-CDF supports: *“Development by the People, for the People”*. In the meantime, the Fund remains a cornerstone of the national government's commitment to ensuring that every corner of the Republic has reasonable access to services as engraved in Article 6 of the Constitution.



# SCIENCE ON WHEELS

## Expanding Access to Practical Science Learning

– By Zainab Hussein

In any Kenyan driving school, there is a familiar rite of passage, ‘the **MODEL TOWN BOARD**’ around a miniature road network on a wooden table, where learners memorize and learn how to drive toy cars. But the confidence they gained quickly fades the moment they face real traffic on the Roads. For years, science in many schools followed a similar pattern. Students could draw a Bunsen burner and recite the Periodic Table, but many had never handled real science apparatus. They were learning science on paper, which limited their preparation for STEM pathways.



### From Theory to Practice

The Kenyan education sector is going through a shift driven by the Competency-Based Education (CBE) framework introduced in 2017. The system accentuates learner-centered education, practical experimentation, and the development of skills in science and technology.

As the first cohorts of Junior Secondary School learners, now numbering over **4.5 million**, move through Grades 7, 8, and 9 and transition into Grade 10, demand for science infrastructure has surged. With practical science now a mandatory component of the curriculum, access to functional laboratories has become urgent.

Without access to laboratories, many learners, especially in marginalized communities, remain in the “Model Town Board” phase of science learning, without real experience.

To address this challenge, the NG-CDF is supporting innovative approaches in liaison with

the Ministry of Education to expand laboratory access across schools and support the transition to Senior School. One solution is the introduction of Mobile Science Laboratories, bringing “Science on Wheels” directly to learners.

The initiative is implemented in collaboration with the School Equipment Production Unit (SEPU). SEPU is a government agency under the Ministry of Education mandated to design, manufacture, supply, and distribute science materials and apparatus to educational institutions.

**"The Test of all knowledge is Experiment. Experiment is the Sole Judgement of all Truth." — Richard P. Feynman**

### Closing the Infrastructure Gap

In the 2025 to 2026 financial year, the NG-CDF was allocated approximately **KES 58.7 billion**, to allow scalable investment in education infrastructure. More than 70 percent of the fund is directed toward education related projects.

Despite the allocation, constituencies still face competing development priorities.

A normal science laboratory costs between **Ksh 5 million** and **Ksh 10 million** to construct and equip, while a mobile laboratory typically costs between **Ksh 250,000** and **Ksh 500,000** and provides a practical and immediate solution. These units include fully equipped experiment kits that enable practical science lessons to take place directly in the classroom.

For the cost of constructing one permanent laboratory building, a constituency can equip several schools with mobile laboratory units. This model allows constituencies to maximize the impact of available resources while tackling competing infrastructure needs across schools and communities.

The introduction of mobile laboratories is already transforming science education in participating schools. Students who previously relied on theoretical explanations can now conduct experiments using real laboratory equipment.

Teachers demonstrate scientific concepts more effectively, while learners obtain hands-on experience that strengthens their understanding of physics, chemistry, and biology.



**Figure 1: Students conduct a practical chemistry experiment in a laboratory, applying hands-on science.**



**Figure 2: Final inspection of mobile science laboratory equipment in Manyatta Constituency ahead of the official handover to schools.**



## Constituency Spotlight

Several constituencies have already begun implementing mobile laboratories with more than **282 mobile units deployed**. Some of the constituencies include:

| NO. | CONSTITUENCY     | COUNTY    | MOBILE LABS /UNITS |
|-----|------------------|-----------|--------------------|
| 1   | Mathioya         | Murang'a  | 20 units           |
| 2   | Manyatta         | Embu      | 54 units           |
| 3   | Bahati           | Nakuru    | 5 schools          |
| 4   | Dagoretti South  | Nairobi   | 12 units           |
| 5   | Eldama Ravine    | Baringo   | 12 units           |
| 6   | Kajiado North    | Kajiado   | 4 units            |
| 7   | Kajiado South    | Kajiado   | 6 units            |
| 8   | Mogotio          | Baringo   | 15 units           |
| 9   | Nakuru Town West | Nakuru    | 12 units           |
| 10  | Narok North      | Narok     | 12 units           |
| 11  | Narok West       | Narok     | 72 units           |
| 12  | North Imenti     | Meru      | 29 units           |
| 13  | Ol-Kalau         | Nyandarua | 2 units            |
| 14  | Turkana East     | Turkana   | 7 units            |



Figure 3: Sample mobile science laboratory equipment in Mathioya Constituency ahead of the official handover to schools.



Figure 4 : Students demonstrate the use of mobile science laboratory equipment in Manyatta Constituency.



# Fueling Community Potential:

## How Constituency Innovation Hubs Are Changing Constituencies - By Lynex Oloo

**A**cross the country, a quiet digital revolution is unfolding; one powered by the NG-CDF's Constituency Innovation Hubs. These hubs are more than just buildings with computers; they are vibrant engines of opportunity, strategically placed at the grassroots to open doors for young people and strengthen community resilience.

The programme is a key component of the country's digital transformation agenda, aimed at expanding access to digital services, fostering innovation, and creating new opportunities for communities at the grassroots level. For thousands of youth, these hubs have become gateways to meaningful employment. With reliable internet access and digital infrastructure, young people can now tap into the growing world of online work, where they are no longer limited by geography, but empowered to compete for jobs worldwide.

Just as importantly, the hubs are bringing government services closer to the people. The public can now access essential **e-government platforms**, from vital documents to public information, without the long, costly journeys that once stood in the way.

To date, **420 Innovation Hubs have been established across 224 constituencies**, with the remaining sites progressing through various stages of development. This phased implementation reflects a deliberate and structured approach to rollout, while demonstrating the Fund's continued commitment to advancing digital inclusion, strengthening local digital capacity, and expanding equitable access to technology-enabled services across the country.

Through these hubs, communities are gradually



gaining improved access to digital infrastructure that supports learning, entrepreneurship, and connectivity, helping bridge the digital divide and positioning local populations to participate more fully in the digital economy.

One such example is the **Chewani Ajira Youth Empowerment Centre in Galole Constituency**.

### Chewani Ajira Centre:

In the heart of Galole Constituency, the Chewani Ajira Youth Empowerment Centre (AYEC) is proving that opportunity is no longer confined to urban centres. What began as a digital hub is now a launchpad for the region's youth, equipping them with the skills and confidence to compete in the global digital economy.

From digital literacy to online freelancing, the centre offers a practical, hands-on curriculum designed to turn potential into paychecks. Trainees gain access to reliable internet, and mentorship; learning everything from virtual assistance and digital marketing to transcription and customer service. More than just a training facility, Chewani Ajira is a gateway to remote work, entrepreneurship, and a future unbounded by geography.

### Powering Inclusion, One Trainee at a Time

The hub's impact is as tangible as it is inspiring. With support from **NG-CDF Galole**, the centre has procured headsets and ergonomic workstations, enabling trainees to engage in simulated role-play sessions that mirror real-world call centres and remote support roles. These tools build the communication and professionalism skills that are in high demand globally.

### The impact is evident:

- **Over 3,100 youth** trained at the hub, with more than **4,000** reached through collaborative programs across Tana River County.
- A deliberate focus on gender inclusion ensures **80% of trainees are women**,

aligning with the national Ajira Digital Program's vision.

- Modern infrastructure, including **CCTVs, solar panels, power backups, and dedicated workstations for Persons with Disabilities (PWDs)**, ensures a safe, inclusive, and uninterrupted learning environment.

### A Blueprint for Grassroots Empowerment

The centre's approach goes beyond instruction. It is built on a sustainable four-pillar model:

- **Mobilization:** Collaboration with chiefs, religious leaders, youth groups, and schools to ensure inclusivity.
- **Training:** Twice-weekly sessions covering digital skills, freelancing platforms, and work-readiness modules.
- **Mentorship:** A structured four-week programme pairing trainees with experienced online workers for personalized guidance.
- **Post-Training Support:** Continuous follow-up, job linkages, and feedback mechanisms to support income generation.

### Looking Ahead: A Catalyst for the Future

As the digital economy expands, Chewani Ajira is shifting beyond training to create opportunities. The hub aims to introduce advanced digital skills programmes, strengthen partnerships, and serve as a model for community-based digital centres that catalyze local economic growth. In Galole, the future of work is already taking shape in community halls, on computer screens, and in the ambitions of young people now competing on a global stage.

These hubs are more than an initiative; they represent a commitment to broadening access to technology, expanding opportunity, and ensuring that every Kenyan has a fair chance to participate in the digital economy.



***Chewani Ajira Youth Empowerment Centre***



***Kabimoi Ict Hub Funded by NG-CDF Eldama Ravine***





## TRANSFORMING LIFE AT KAREN C SECONDARY SCHOOL IN LANGATA CONSTITUENCY. - By Martin Mwema

For years, the girls of Karen C Secondary School carried an invisible burden that followed them beyond the classroom. As enrolment steadily grew, the school was forced to make a difficult compromise: learning spaces meant for growth and discovery were converted into temporary dormitories. Classrooms became sleeping quarters and privacy, comfort, and safety were stretched to their limits.

During the Langata NG-CDF public participation forums in 2023, this challenge was voiced clearly and passionately by parents, community members and the school's management. Their message was simple but urgent: *our girls deserve better*. They deserved a safe, dignified place to rest, study, and grow into confident young women.

The Langata NG-CDF Committee listened and acted.

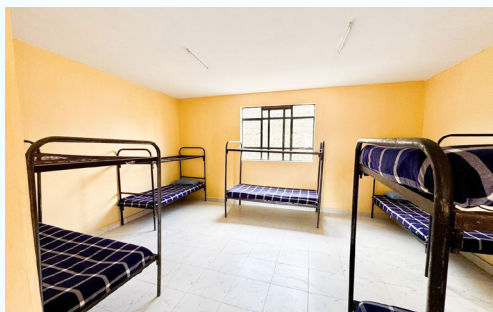
With a firm commitment to student welfare and education outcomes, the Committee approved the construction of a modern, purpose built dormitory at a total cost of KES 43 million, spread over three financial years. This was more than a construction project; it was an investment in dignity, safety, and

the future of 500 young girls.

Rising gracefully across multiple storeys, the new dormitory is designed with both function and care in mind. It features spacious cubicles, ample bathrooms, PWD-accessible facilities, a fully equipped laundry area and comfortable, self-contained housing for the school matron ensuring round the clock care and supervision. Every detail speaks to thoughtful planning and a deep understanding of student needs.

Today, where overcrowded classrooms once doubled as sleeping areas, a secure and welcoming home now stands. The project has progressed seamlessly in line with approved plans, reflecting prudent stewardship of public funds and effective collaboration between the NG-CDF, the school and the community.

For the girls of Karen C Secondary School, this dormitory is more than bricks and mortar. It is peace of mind. It is restored classrooms. It is safer nights, better mornings, and renewed focus on learning. Above all, it is a powerful reminder that when a community speaks and leadership listens, lasting change is possible.





# INSIDE THE KITCHEN THAT CHANGED SCHOOL LIFE IN GITHUNGURI

– By Anne Mwaniki

**E**very morning before classes begin across Githunguri Constituency, something quiet but significant is already underway. Long before the first lesson starts, activity at the Ikinu Central Kitchen is in full motion. Large cooking pots are prepared, delivery teams organize routes, and meals begin their journey to dozens of schools across the constituency. By lunchtime, thousands of learners receive a hot meal, something that was not guaranteed only a few years ago.

The idea for the kitchen did not originate from a policy paper or strategic plan. It came directly from parents, teachers, and school leaders during public participation forums. Schools spoke openly about feeding programmes that had failed despite good intentions. Costs were high, management was difficult, and many learners depended on cold food brought from home.

The NG-CDF Committee of Githunguri Constituency, responded by prioritizing school feeding infrastructure. What began as a proposal to construct five separate kitchens evolved after consultations with Food for Education, which

recommended a centralized model capable of serving the entire Constituency efficiently.

Ikinu Primary School was selected as the site due to reliable water supply, accessibility, and sufficient space to support large-scale operations. Construction began in the 2022/2023 financial year and expanded in phases as practical challenges emerged from upgrading cooking capacity, to improving accessibility and stabilizing essential utilities.

Today, the kitchen serves nearly 26,000 learners drawn from 53 primary schools and several day secondary schools, and the difference within schools has been noticeable, with teachers reporting calmer classrooms and improved afternoon attendance as learners remain in school throughout the day instead of leaving early due to hunger, making a consistent lunch part of the normal school routine rather than an uncertainty.

For parents, the programme has significantly reduced daily costs associated with school feeding. Meals are provided at Ksh 20 per day for





primary pupils and Ksh 30 for secondary students, far below previous feeding expenses. The reduced cost has eased financial pressure on families while allowing schools to maintain a reliable and organized feeding system.

Beyond schools, the project has created employment opportunities for community members working as cooks, servers, loaders, supervisors, and support staff. The kitchen operates as both a social programme and a local economic hub, circulating income within surrounding households and businesses.

Infrastructure developed around the project has produced additional benefits. Rehabilitation of the borehole improved water access, power upgrades supported night time food preparation, and environmentally friendly briquettes replaced traditional firewood, reducing environmental impact while improving efficiency.

Perhaps the most telling outcome is how quickly the kitchen has become an accepted part of community life. Meals prepared at Ikinu now reach thousands of learners daily through a coordinated system that combines public investment with professional operational management.

What stands out is not only the scale of the project, but its practicality. A challenge identified during public participation translated into an intervention that directly touches learners, parents, schools, and local workers every single day.

The Ikinu Central Kitchen demonstrates how targeted NG-CDF investments can move beyond construction to deliver ongoing social value. In Githunguri Constituency, the impact is seen in full classrooms, predictable school routines, and communities experiencing the tangible results of locally informed development decisions.



# HOW STRATEGIC PROJECTS ARE TRANSFORMING LIVES IN KITUI COUNTY

- By Irene Kariuki

**T**he National Government Constituencies Development Fund (NG CDF) continues to make a profound impact across Kitui County, turning community priorities into visible, life changing development. Through targeted investment in education, security, and essential infrastructure, the Fund is ensuring that every shilling delivers value where it matters most.

## **Education First: Building Bright Futures**

This quarter, NG CDF placed education at the

heart of its development agenda, because strong classrooms build strong communities.

Across several constituencies, the Fund has financed the construction of new classroom blocks, renovated aging school facilities, and supplied desks to ease congestion and improve the learning environment. These upgraded spaces are giving learners the comfort, dignity, and resources they need to thrive academically.

Hundreds of students have also benefited







from bursaries, offering critical financial relief to families struggling with school fees. These bursaries are lifelines that ensure children stay in school and continue learning without disruption.

Beyond classrooms, the NG CDF's investment in sanitation facilities and laboratories is raising academic standards, empowering learners to access practical science education and healthier school environments.

### **Strengthening Communities & Enhancing Security**

Development doesn't stop at the school gate. Recognizing the importance of safe and well governed communities, the Fund has also invested in strategic community and security projects.

New and refurbished chiefs' offices are improving

service delivery, giving local administration the infrastructure needed to respond quickly and effectively to community needs. Meanwhile, the installation of security lighting in key market centers has enhanced safety, extended business hours, and boosted economic activity by giving traders and residents peace of mind.

These changes are social and economic catalysts that uplift the quality of life across Kitui.

### **Leadership That Puts People First**

"Our focus remains on investing in projects that directly uplift our people, especially in education and security. NG-CDF resources must translate into visible, measurable impact in our communities," affirmed the area MP.

This commitment continues to guide development efforts across Kitui County, ensuring that every project whether big or small, moves the community forward.

# NG-CDF BOARD ADVANCES EDUCATION INFRASTRUCTURE IN WUNDANYI CONSTITUENCY

- By Anita Jerotich







**T**he National Government Constituencies Development Fund (NG-CDF) Board continues to demonstrate excellence in project management while advancing grassroots development across the country. Guided by its commitment to socio-economic empowerment, the Board remains focused on delivering sustainable initiatives that directly improve community livelihoods.

During the quarter, the Board intensified its investment in the education sector, a key pillar in achieving national development goals. By prioritizing modern, inclusive, and accessible learning facilities, NG-CDF is strengthening the foundation for long-term social and economic transformation.

In Wundanyi Constituency, Taita Taveta County, the NG-CDF Board Director, Hon. Gabriel Kago, alongside the Chief Executive Officer, Mr. Yusuf Mbuno, EBS, presided over a groundbreaking ceremony for the construction of four new

classrooms at Ngururu Comprehensive School. The project will accommodate 160 pupils and is expected to significantly boost enrolment and improve academic performance.

The delegation also commissioned a newly completed six-classroom block at Sungululu Comprehensive School, further expanding learning capacity within the constituency and enhancing the overall learning environment.

Both projects are funded under the Best Practice Demonstration Programme (BPDP) for the 2025/2026 Financial Year. They are designed to provide a conducive environment that enhances educational outcomes while improving the quality and sustainability of school infrastructure.

The events were attended by the area Member of Parliament, Hon. Danson Mwashako, representatives from the National Government Administrative Officers (NGAOs), students, parents, and members of the public.





# CHANGING LIVES THROUGH EDUCATION: NG-CDF'S IMPACT AT THE GRASSROOTS

– By Yvonne Michuki

**A**cross communities in Kenya, investments by the **National Government Constituencies Development Fund Board (NG-CDF)** are transforming schools, expanding opportunities for learners, and strengthening the foundation for a brighter future.

In many parts of Kenya, access to quality education has long depended not only on the dedication of teachers and learners, but also on the availability of proper learning facilities. For years, overcrowded classrooms, limited

infrastructure, and long distances to school made learning a daily challenge for many students.

Today, that story is steadily changing.

Across the country, the **National Government Constituencies Development Fund Board** continues to invest in projects that directly improve the lives of communities. Through the Best Practice Demonstration Programme (BPDP), the Board is strengthening education infrastructure while promoting transparency and accountability in development initiatives.





One such example is in **Awendo Constituency**, where students, teachers, and parents gathered to mark the commissioning of new education facilities.

At **St. Joseph's Kamyawa Secondary School**, excitement filled the air as a newly constructed block of three modern classrooms was officially handed over to the school. For the students who will study there, the building represents far more than bricks and mortar, it represents opportunity.

For years, many learners in the area studied in crowded classrooms that made concentration and effective learning difficult. With the new classrooms now in place, teachers can deliver lessons in a more comfortable environment while students enjoy the space and resources they need to thrive academically.

The commissioning ceremony was attended by NG-CDF Board Director **Naomi Masitsa**, the Board's Chief Executive Officer **Yusuf Mbuno**, and the area Member of Parliament **Walter Owino**, alongside school leaders and community members.

Together, they witnessed firsthand how strategic investment in education can uplift an entire community.

The delegation also visited **Anindo Comprehensive School**, where another major milestone has been achieved. A new storey building consisting of eight classrooms has been completed, significantly expanding the school's capacity and helping to

reduce overcrowding.

For many families in the constituency, these improvements bring renewed hope. Better learning facilities mean that children can now study in environments that support their growth, confidence, and academic success.

Another highlight of the visit was the handover of a **46-seater school bus** to **St. Joseph's Kamyawa Secondary School**. For the students, the arrival of the bus was met with excitement and pride.

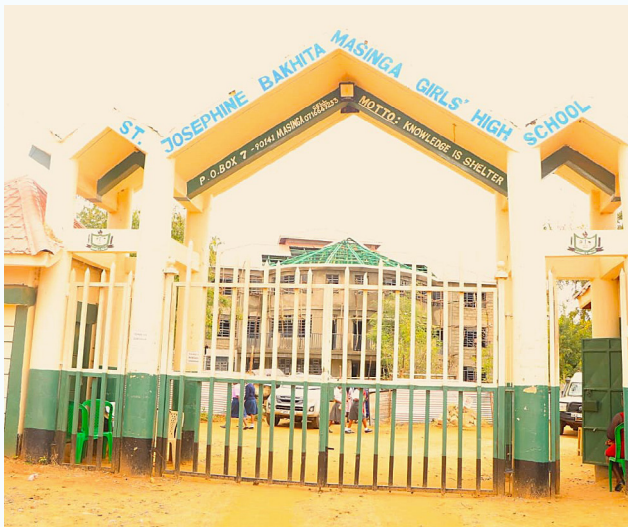
Beyond transportation, the bus represents new possibilities. It will allow learners to participate more easily in academic competitions, sports activities, and educational trips, experiences that play an important role in holistic learning.

It will also ease the burden on parents and guardians who previously faced challenges arranging transport for school-related activities.

Across Kenya, stories like this continue to unfold as communities benefit from the work of the **National Government Constituencies Development Fund Board**. By investing in education infrastructure and student welfare, NG-CDF is helping ensure that development reaches the grassroots and that every child has a chance to succeed.

For the students stepping into their new classrooms and boarding their new school bus, the message is clear: their future matters, and their community believes in their potential.





# NG-CDF Board Leads High-Impact Project Verification Mission Across the Lower Eastern Region

- By Reuben Kamau

In a bold demonstration of its commitment to transparency, accountability, and meaningful development, the NG-CDF Board embarked on an intensive project verification tour across the Lower Eastern region this quarter. The mission aimed to ensure that ongoing and completed projects genuinely reflect approved standards, meet technical specifications, and deliver real value to the communities they serve.

Project verification remains a cornerstone of the Board's governance framework, ensuring that any issues identified in ongoing works are resolved before additional funds are released. This proactive approach safeguards public resources and strengthens the credibility of NG-CDF-funded initiatives nationwide.

Leading the verification delegation were NG-

CDF Board Directors Hon. Gabriel Kago, Dr. Sugut William Kiplagat, Mr. Festus Wangwe, and Board CEO Mr. Yusuf Mbuno, EBS. Their hands-on engagement underscored the Board's unwavering resolve to champion effective project management across constituencies.

## Extensive Tour Across Four Key Constituencies

The multi day tour covered Mwingi Central, Masinga, Mavoko, and Machakos Town constituencies. This is one of the areas where NG-CDF has made significant investments in education, security, and community infrastructure.

## Mwingi Central: Celebrating Milestones in Education Infrastructure

Mwingi Central was a highlight of the tour, with the Directors presiding over the official opening of several newly completed projects. The area MP,



Hon. Dr. Gideon Mulyungi, joined the celebrations alongside enthusiastic residents who expressed gratitude for the Board's continued investment in learning facilities.

Schools visited included:

- Kasina Primary and Junior School
- Mwingi Comprehensive School
- Mboru Comprehensive School
- Kitinga Comprehensive School
- Kamunyu Primary School
- Kalisasi Primary School
- Kalisasi Secondary School

These institutions are now better equipped to support academic excellence and accommodate the growing number of learners in the region.

### **Masinga: Verifying Progress in Expanding Learning Spaces**

In Masinga Constituency, the Board inspected pivotal projects including:

- **St. Josephine Bakhita Masinga High School**, where the construction of a new administration block is underway.
- **Kwawanzilu Secondary School**, featuring a modern dining hall with capacity for 900 students—an essential facility aimed at improving student welfare.

### **Machakos Town: Strengthening Security Infrastructure**

The tour continued to Machakos Town Constituency, where the team assessed the

**Machakos Sub-County Administration Police Office.** Once completed, the facility is expected to enhance security operations and improve service delivery to the public.

### **Mavoko Constituency: Supporting a Rapidly Growing Urban Hub**

In the fast-expanding Mavoko constituency, the Board visited the **Mlolongo Police Station**, a key asset in bolstering security and managing rising urban demands. They also inspected transformative educational investments at **Mlolongo Primary School**, where NG-CDF has supported the construction of a three-storey, nine-classroom block which is an impactful solution to overcrowding.

### **Driving Accountability. Enabling Impact. Transforming Communities.**

Through this verification exercise, the NG-CDF Board reaffirmed its dedication to ensuring that every shilling invested translates into tangible community benefits. By upholding rigorous oversight and engaging directly with local stakeholders, the Board continues to set a high standard for public resource management.

This quarter's verification tour in the Lower Eastern region reflects a broader national agenda: building trust, enhancing transparency, and accelerating development outcomes that uplift communities across Kenya.





## A MAJOR STEP FOR LEARNERS IN CHUKA IGAMBA NG'OMBE

– By Anne Mwaniki

In a remarkable stride toward strengthening grassroots education, the National Government Constituencies Development Fund Board (NG-CDF) has unveiled a new chapter of hope at Kajjampau Secondary School. This quarter, the community gathered to celebrate the commissioning of a 100-bed dormitory and a modern sanitation block, an achievement that reflects not only infrastructural

development, but the promise of dignity, safety, and opportunity for every learner.

Implemented under the **Best Practice Demonstration Programme for the 2023/2024 Financial Year**, the project responded to a pressing challenge: students travelling long distances daily and inadequate ablution facilities that strained the school's capacity. With an investment

of **Ksh. 12,248,150.00** and a construction span of just **24 weeks**, NG-CDF has delivered a solution grounded in quality, efficiency, and sustainability.

The new dormitory is fully furnished with **50 double-decker beds**, instantly opening up safe boarding spaces for **100 learners**. For students who previously endured long, exhausting commutes, the facility offers more study time,





improved concentration, and a greater sense of security. Complementing this is a contemporary sanitation block designed to elevate hygiene standards and reduce congestion in existing facilities.

This intervention is expected to have far-reaching impact: **lower absenteeism**, reduced **school dropout rates**, and improved **academic performance**, all underpinned by a healthier, more conducive learning environment.

### A Model for Excellence in Public Sector Delivery

The initiative is part of the NG-CDF's flagship **Best Practice Demonstration Programme**, crafted to showcase excellence in public project execution nationwide. The Programme champions:

- **Community participation**
- **Social inclusion**
- **Environmental sustainability**
- **Strict adherence to laws and policies**

- **Accessibility features**, including ramps and inclusive sanitation design

Since its inception, the Programme has invested **over Ksh. 2.37 billion**, with a remarkable 92% channeled into education. Education remains NG-CDF's cornerstone, accounting for approximately **76% of all constituency-level allocations**. Between 2020/2021 and 2024/2025 alone, NG-CDF has supported the construction of **more than 26,000 classrooms**, a milestone that continues to transform learning spaces across the country.

### Quality You Can See, Impact You Can Feel

A joint monitoring exercise by the NG-CDF Board and constituency leadership affirmed that the dormitory and sanitation block meet all required safety and building standards. The team lauded the high level of craftsmanship and emphasized the importance of routine maintenance to safeguard the facilities for generations of students to come.





# EAST SEME CHIEF'S OFFICE, BRINGING GOVERNMENT SERVICES CLOSER TO THE COMMUNITY

– By Weldon Langat

**T**he Seme NG CDF has funded and completed a new administrative block for the East Seme Chief's Office, officially opened in **February 2026 in East Seme Location, Seme Sub County, Kisumu County**. This flagship investment directly responds to a long standing community need by improving access to essential government services and supporting the State Department for Internal Security and National Administration's commitment to strengthening grassroots governance across the country.

## A Milestone for Local Governance

Before this project, the East Seme Chief's Office operated from a cramped room within a building owned by the County Government of Kisumu. At one point, county authorities requested the team to vacate the premises to create space for their own administrative offices this left the chief and assistant chiefs uncertain about where they could continue serving residents.

This challenge underscored the urgent need for a permanent, dignified, and dedicated national government facility.

Through the Seme NG-CDF, land was purchased and a modern administrative block constructed, comprising:

- A reception area

- Assistant Chief's Office
- Secretary's Office
- Chief's Office
- Kitchen
- Boardroom

Additionally, the project included the construction of a three door biodigester toilet, ensuring environmental sustainability and improved sanitation for both staff and visitors.

Hon. Dr. James Nyikal, MP for Seme, celebrated the completion of the project, noting:

"The NG-CDF is committed to ensuring that every resident of Seme can access government services without unnecessary barriers. This office is proof that when resources are directed to community priorities, development becomes visible and meaningful."

The new office provides a central, dignified workspace for National Government Administrative Officers (NGAO), enabling them to deliver essential services with greater efficiency and professionalism.

## Transforming Daily Service Delivery

For many years, residents of East Seme had to travel long distances or queue outside temporary structures to receive basic services. The new office has changed this reality, offering convenient access



to:

- Civil registration support
- Introductory and recommendation letters
- Conflict resolution and dispute mediation
- Security and public order coordination
- Public participation forums
- Relief distribution and social support services

With the expanded and well organized space, officers can now handle sensitive matters with greater confidentiality and improved efficiency.

Benson D. Leparmorijo, County Commissioner, reflected on the broader impact:

“Government presence at the grassroots is not just about buildings; it is about trust, safety, and partnership. This facility strengthens our ability to engage with citizens, respond to concerns, and promote peaceful coexistence.”

### **Human Stories of Convenience, Dignity, and Trust**

To local residents, the new East Seme Chief’s Office is more than an administrative building; it represents a renewed sense of dignity and connection with government.

**Mama Mary Achieng’**, a long time resident, shared: “Before this office was built, getting a simple document meant spending almost the whole day traveling or waiting outside in the sun. Now everything is close, orderly, and respectful. It has made our lives easier.”

For young people seeking jobs, bursaries, or training opportunities, timely access to introductory letters is essential.

**Kevin Otieno**, a boda boda rider, expressed his

appreciation:

“Getting my documents processed quickly has helped me apply for jobs and other opportunities. The new office treats us like we matter, and that motivates us.”

The expanded boardroom has also enabled more structured community meetings, forums, and public participation processes that were previously difficult due to limited space.

### **Strengthening Security and Social Cohesion**

With a fully equipped office, security coordination has become more effective. Residents can now report incidents more efficiently, and administrators can respond swiftly through better structured operations and record keeping.

Mr. Charles Achola, the Area Chief, highlighted these improvements:

“This office has changed how we serve people. We now have enough space, better organization, and improved confidentiality when handling sensitive cases. The community feels valued, and our service delivery has improved significantly.”

### **A Foundation for Future Development**

The East Seme Chief’s Office stands as a testament to what can be achieved when NG CDF investments align with community priorities. It reflects a deeper national commitment to decentralizing services, enhancing citizen engagement, and strengthening administrative structures.

As the community continues to enjoy the improved services now available closer to home, the facility remains a symbol of progress, partnership, and the promise of better governance at the grassroots.





# Building a Better Kimilili

– By Martin Mwema

**A** major milestone in enhancing service delivery was recently marked by the official launch of the Kimilili Huduma Centre by His Excellency Dr. William Samoei Ruto.

The Huduma Centre, fully funded by National Government Constituencies Development Fund (NG-CDF), is a transformative project bringing essential Government services closer to wananchi. Once operational, the centre will significantly reduce travel time and costs previously incurred by residents seeking

those services in Bungoma hence enhancing efficiency, accessibility and citizen satisfaction within the constituency.

Kimilili Constituency continues to emerge as a model of targeted, community driven development through sustained investments by NG-CDF. With a youthful and growing population, the constituency has strategically prioritized education, social support, and infrastructure to unlock long-term socio-economic progress.





Over time, the Fund has ensured delivery of over 521 new and improved learning spaces, significantly reducing congestion and enhancing the quality of education across primary, junior secondary, and secondary schools. Complementing this, the bursary program has supported over 67,000 learners with Ksh. 162 million, ensuring equitable access to education particularly for vulnerable and female students.

Beyond education, NG-CDF interventions have strengthened community resilience through emergency responses, environmental conservation initiatives, and the completion of key security infrastructure such as the Chesamisi AP Camp. The ongoing development of an ICT Digital



Hub further signals a forward-looking approach to youth empowerment and digital inclusion.

Despite challenges such as funding constraints and delayed disbursements, the Kimilili NG-CDF Committee has maintained strong financial discipline, achieving an average utilization rate of over 97%, a testament to effective governance and accountability.

As Kimilili continues to invest in people-centered development, the constituency stands as a strong example of how strategic resource allocation and inclusive governance can transform livelihoods at the grassroots level.



# Beyond the desk





## STAYING THE COURSE:


We trust you are keeping pace with the important organizational progress we have made! As we navigate the mid-point of our current Strategic Plan, it is vital that we remain aligned.

Our collective hard work is changing the

landscape of grassroots development across Kenya. To ensure we continue keeping you abreast of our direction as you work diligently towards meeting the vision of the organization, we want to remind you of our fundamental pillars:

 **Our Vision:** Transformative and Sustainable development in all parts of the country

 **Our Mission:** To ensure prudent allocation and utilization of resources for sustainable development across the country

 **Core Values;**

- Economic Use of Resources and Sustainability
- High Standards of Professionalism & Ethics
- Equity and inclusiveness
- Teamwork
- Integrity
- Creativity and innovation, and
- Collaboration and Partnership

Do not forget to grab a copy of the strategic plan from the planning Department.

Let's keep the momentum going as we work toward our shared goals.

## FOOTBALL MANIA: The Pitch is calling!



Fitness supports focus and energy at work, step away from your desk and get moving!!!!

Join the NG-CDF Football Team, build team spirit, stay fit, and enjoy the game.

All skill levels are welcome to play, support, or cheer from the sidelines.

We all know that **'all work and no play makes Yvonne a dull girl,'** and we cannot have that!

Let's keep our team active, connected, and strong

See you on the field!!!!





Harambee plaza, 5th & 10th Floor and Ukulima Sacco Building,  
5th & 6th Floor, Haile Selassie Avenue Off Parliament Road,  
Red Cross Lane

P.O BOX 46682-00100, Nairobi  
info@NG-CDF.go.ke | 0709894000

[www.NG-CDF.go.ke](http://www.NG-CDF.go.ke)